



RE/MAX
North



Flat 11, Squires Court Canterbury Gardens, Salford, M5 5AD

£130,000





Flat 11, Squires Court Canterbury Gardens

Salford, M5 5AD

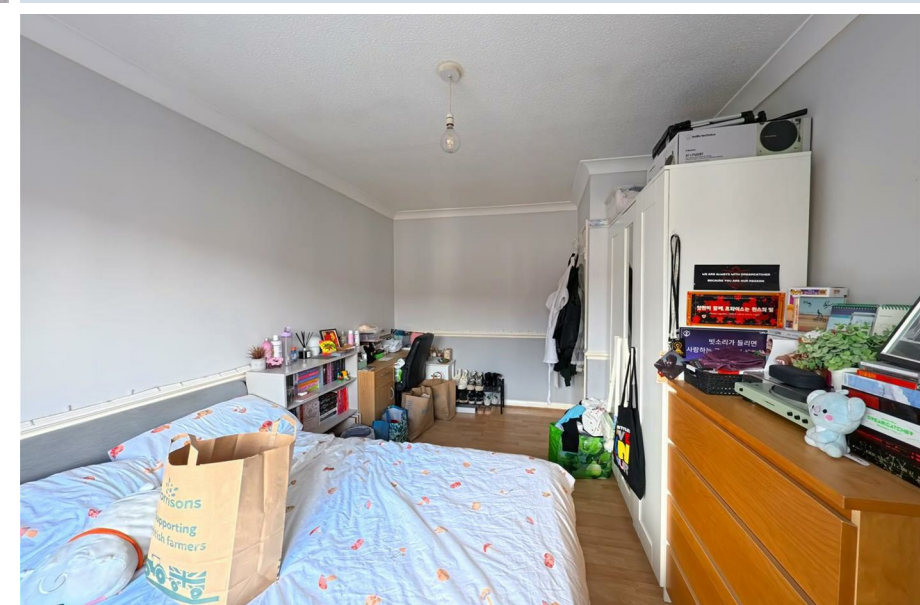
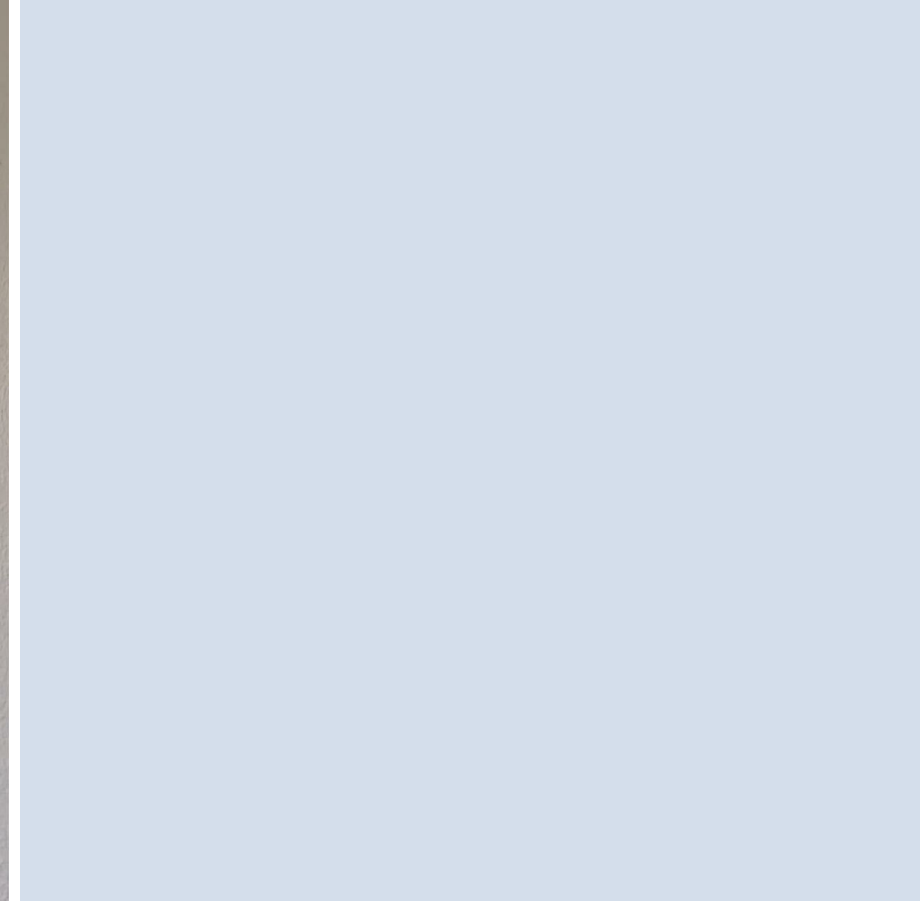
- Owner occupier purchase only
- Modern kitchen with contemporary fittings
- Three-piece bathroom suite
- Communal gardens
- Prime location near Manchester City Centre, Salford Royal Hospital, West One Retail Park, and Eccles Town Centre
- Ample-sized living room for relaxing or entertaining
- Three generously sized double bedrooms
- Secure off-road parking
- Excellent transport links: bus, rail, and Ladywell Metrolink nearby

Beautiful three-bedroom apartment in Salford! This fully furnished home offers a bright and spacious living room, a modern fitted kitchen, three double bedrooms, and a contemporary bathroom suite — combining comfort with practicality. Residents also benefit from communal gardens and secure off-road parking.

Ideally located with excellent transport links, including Ladywell Metrolink, bus and rail services, and close proximity to Manchester City Centre, Eccles Town Centre, and Salford Royal Hospital.

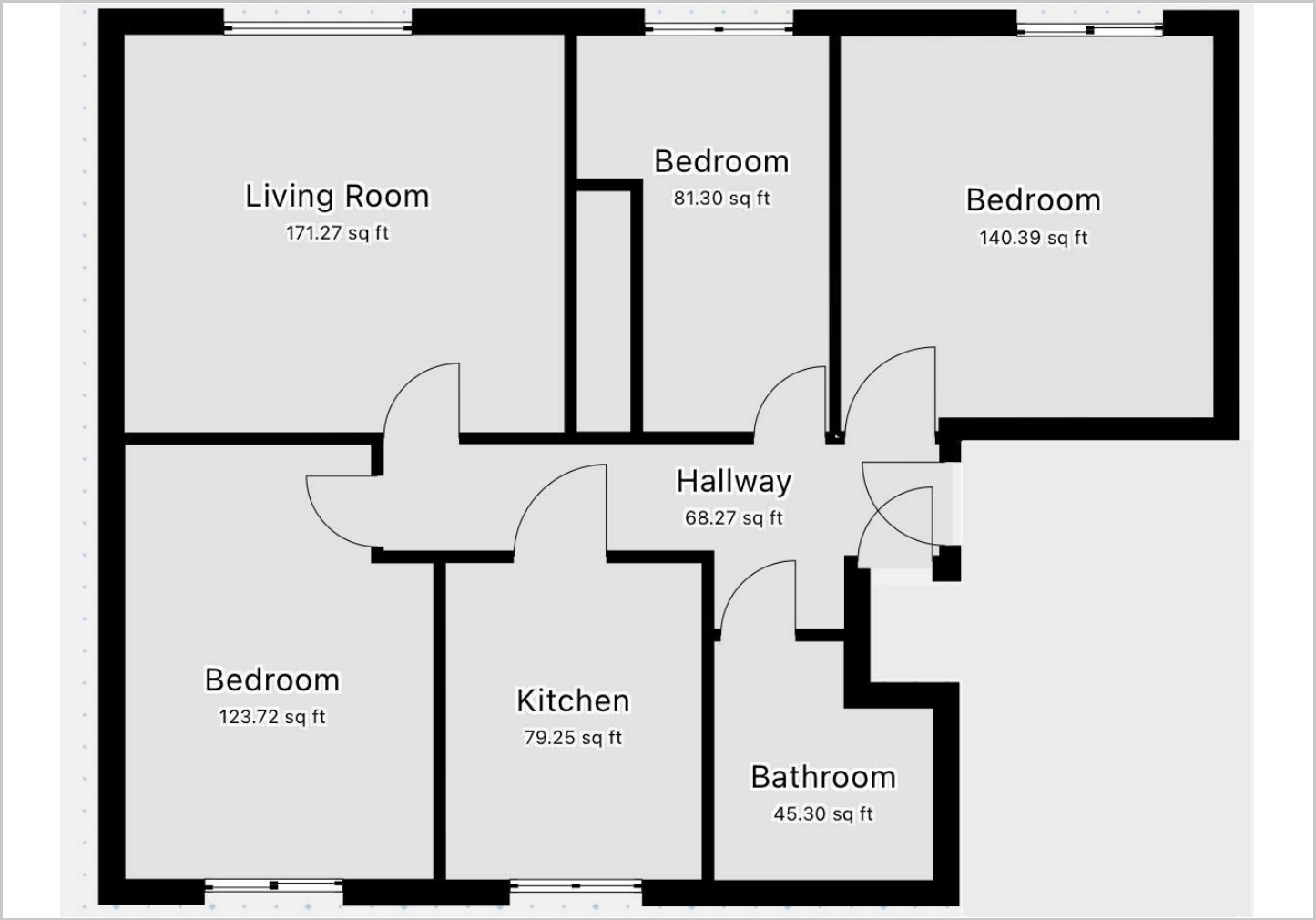
A superb choice for those seeking a well-connected and stylish home in a convenient location.







Floor Plans



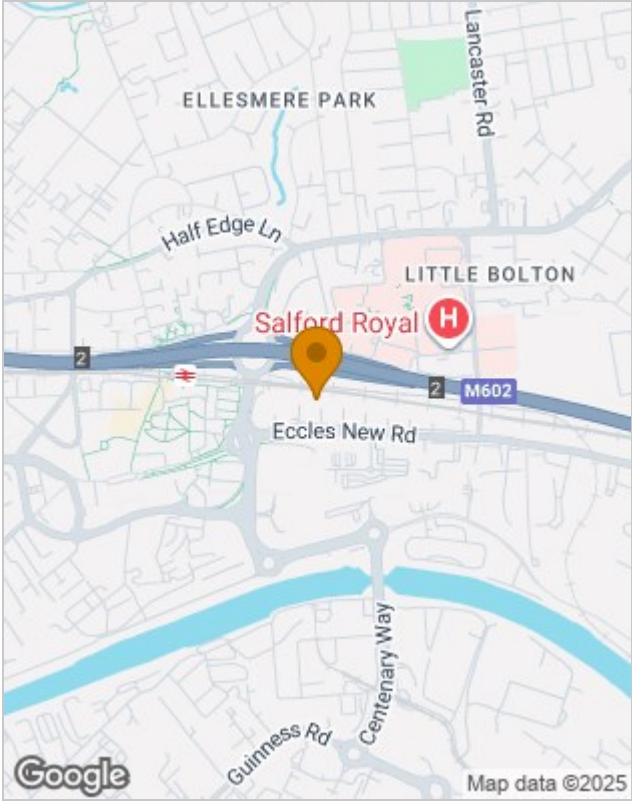
Viewing

Please contact our RE/MAX North Sales Office on +44 (0) 1618 040807 if you wish to arrange a viewing appointment for this property or require further information.

The particulars are set out as a general outline only for the guidance of intended purchasers or lessees, and do not constitute, any part of a contract. Nothing in these particulars shall be deemed to be a statement that the property is in good structural condition or otherwise nor that any of the services, appliances, equipment or facilities are in good working order. Purchasers should satisfy themselves of this prior to purchasing.

94 Phoebe Street, Salford, Greater Manchester, M5 3PH
Tel: +44 (0) 1618 040807 Email: remax.north@remax.co.uk remax.co.uk

Location Map



Energy Performance Graph

