



Strathearn Place  
London, W2

CHESTERTONS









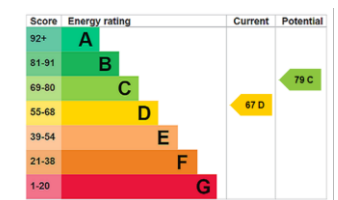
This elegant 1,648 sq ft ground and lower ground floor duplex offers exceptional proportions and timeless character in a sought-after Strathearn Place address. Set within a handsome stucco-fronted period building, the property boasts soaring 3.96m ceilings, stunning hardwood parquet flooring throughout, and a good natural light.

The accommodation includes a grand reception room, a separate dining room, and a beautifully designed kitchen featuring marble worktops, Gaggenau appliances, and a striking skylight. There are three bedrooms, including a luxurious principal suite with a walk-in wardrobe and en suite bathroom, as well as a stylish family bathroom.

Presented in excellent condition, this home perfectly blends period elegance with contemporary finishes. Ideally located close to Hyde Park, Connaught Village, and Paddington Station, it represents a superb London home or an exceptional pied-à-terre.

- 1,648 sq ft duplex
- 3.96m high ceilings
- Three double bedrooms
- Principal bedroom suite
- Family bathroom
- Hardwood parquet flooring
- Grand reception room & separate dining room
- Marble kitchen worktops & Gaggenau appliances
- Excellent condition
- Historic charm throughout
- Modern finishes
- Close to Hyde Park & Paddington Station

Asking Price £2,250,000

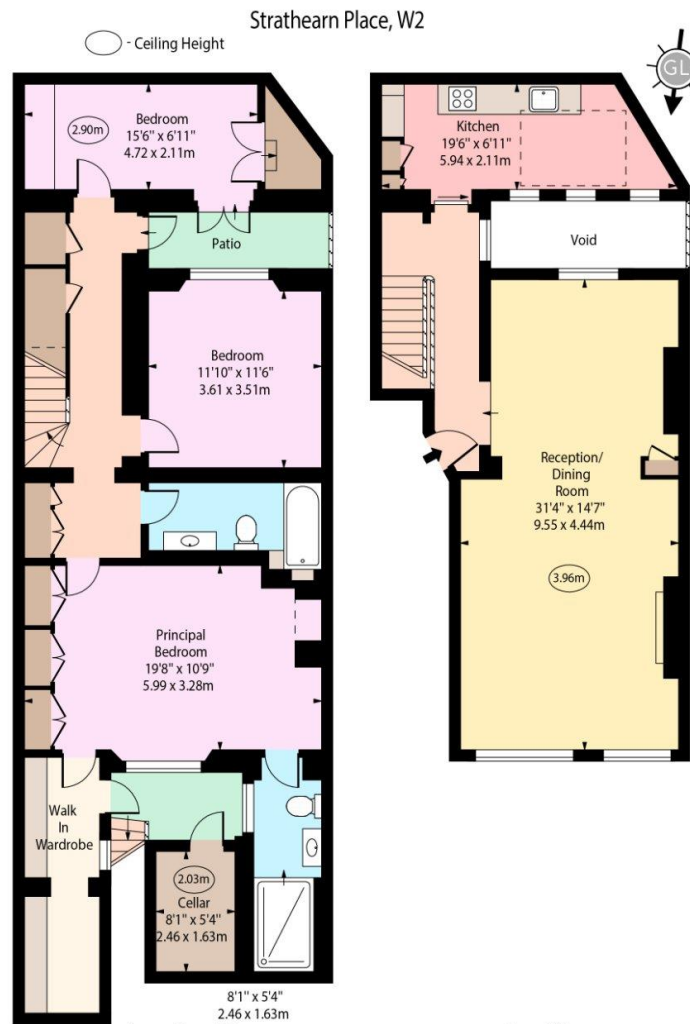


**Tenure:** Share of Freehold with 990 Year Lease  
**Service Charge:** £4374 per annum  
**Ground Rent:** £None  
**Local Authority:** City of Westminster  
**Council Tax Band:** G

*Chestertons Hyde Park & Marylebone Sales*

40 Connaught Street  
 London  
 W2 2AB

hydepark@chestertons.co.uk  
 020 7298 5900  
[chestertons.co.uk](https://www.chestertons.co.uk)



Approx Gross Internal Area    1605 Sq Ft - 149.10 Sq M

(Excluding Cellar)

Cellar Area                      43 Sq Ft - 4.00 Sq M

Approx Gross Internal Area    1648 Sq Ft - 153.10 Sq M

(Including Cellar)

Every attempt has been made to ensure the accuracy of the floor plan shown.  
However, all measurements, fixtures, fittings, and data shown are approximate interpretations and  
for illustrative purposes only. Measured according to the RICS. Not To Scale.  
[www.goldlens.co.uk](http://www.goldlens.co.uk)  
Ref. No. 029684E

Chesterton UK Services Limited trading as Chestertons for themselves and for the vendor of this property whose agents they are, give notice that (i) these particulars do not constitute any part of an offer or contract, (ii) all statements contained within these particulars are made without responsibility on the part of Chestertons or the vendor, (iii) whilst made in good faith, none of the statements contained within these particulars are to be relied upon as a statement or representation of fact, (iv) any intending purchasers must satisfy themselves by inspection or otherwise as to the correctness of each of the statements contained within these particulars, (v) the vendor does not make or give either Chestertons or any person in their employment any authority to make or give representation or warranty whatsoever in relation to this property. Wide angle lenses may be used. ©Copyright Chestertons | Chesterton UK Services Limited | Registered Office 40 Connaught Street, Hyde Park, London W2 2AB Registered Company Number 05334580.



This paper is  
100% recyclable