



Moat Court, Ashted



£389,000

Moat Court

Ashted

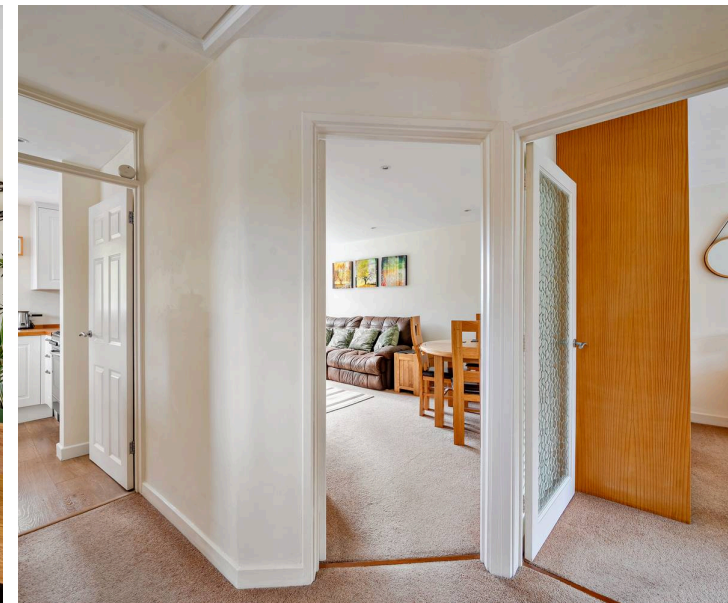
Council Tax band: D

Tenure: Leasehold

EPC Energy Efficiency Rating: C

EPC Environmental Impact Rating: C

- First Floor Maisonette
- Private Entrance
- Two Double Bedrooms
- Modern Kitchen
- Contemporary Shower Room
- Private Garden
- Garage





Moat Court

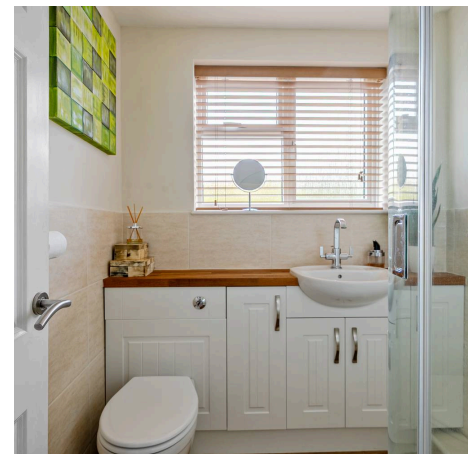
Ashtead

Delightful First-Floor Maisonette with Private Garden & Garage – Heart of Ashtead Village

Situated in an ultra-convenient location in the very heart of Ashtead Village, this beautifully presented first-floor maisonette offers a rare combination of charm, space, and privacy.

Boasting its own private entrance and internal staircase, the property features two generous double bedrooms, a modern fitted kitchen, and a stylish, contemporary shower room. The attractive lounge/dining room is a true highlight, complete with a feature fireplace creating a warm and welcoming atmosphere.

Outside, you'll find a very pretty private garden, mainly laid to lawn with thoughtfully planted borders – ideal for relaxing or entertaining. A private garage in a nearby block provides secure parking or additional storage.



V&H
HOMES

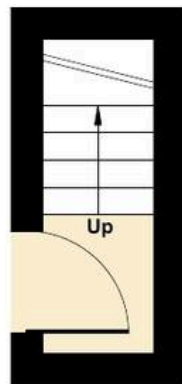
Moat Court, Ashted, KT21

Approximate Area = 699 sq ft / 64.9 sq m

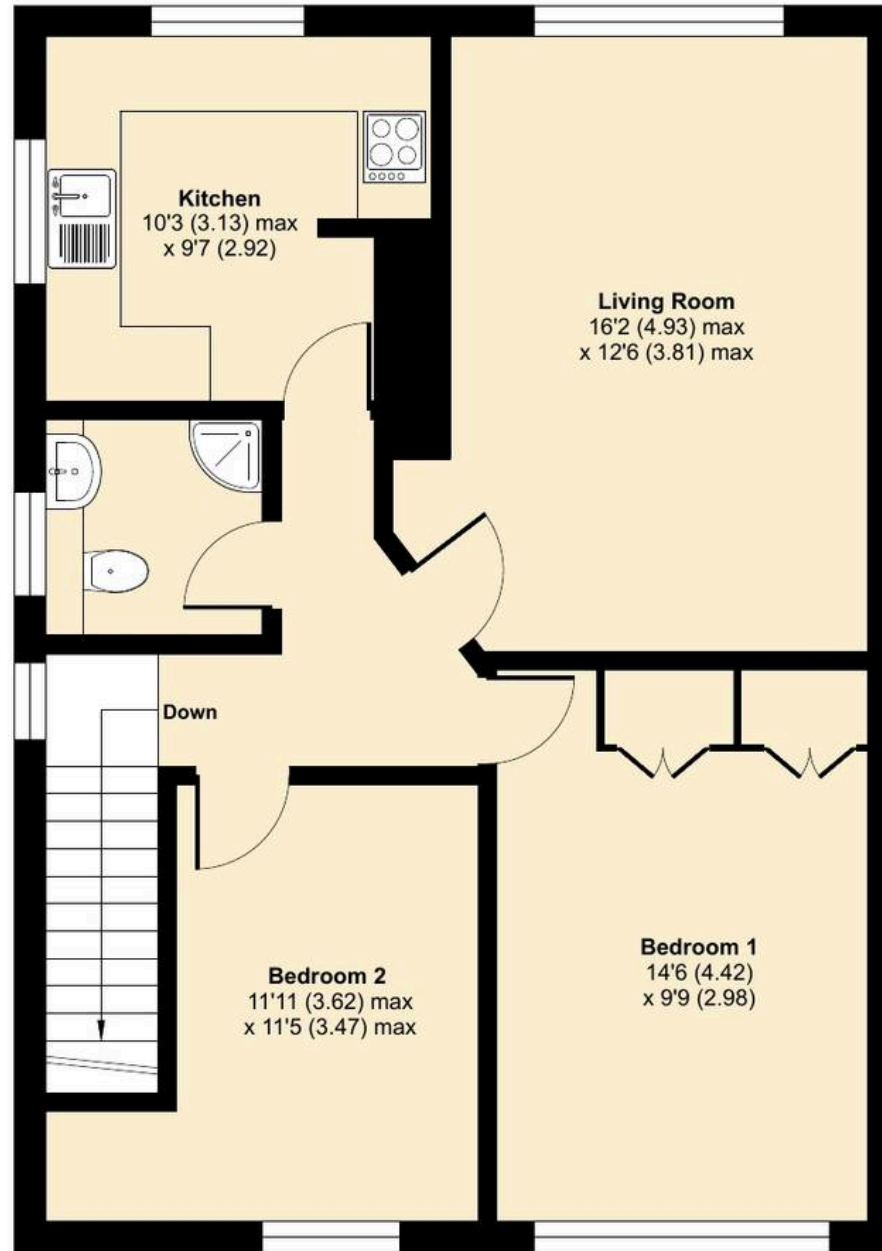
Garage = 115 sq ft / 10.6 sq m

Total = 814 sq ft / 75.5 sq m

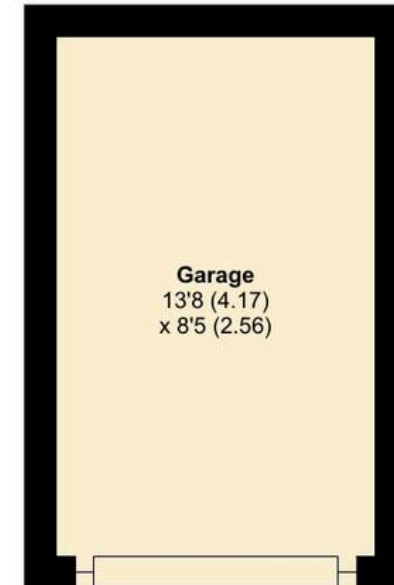
For identification only - Not to scale



GROUND FLOOR



FIRST FLOOR



Garage
13'8 (4.17)
x 8'5 (2.56)



Floor plan produced in accordance with RICS Property Measurement 2nd Edition, Incorporating International Property Measurement Standards (IPMS2 Residential). © nichecom 2025. Produced for V&H Homes. REF: 1365481

