



Plough Road, SW11

£2,400 Per calendar month

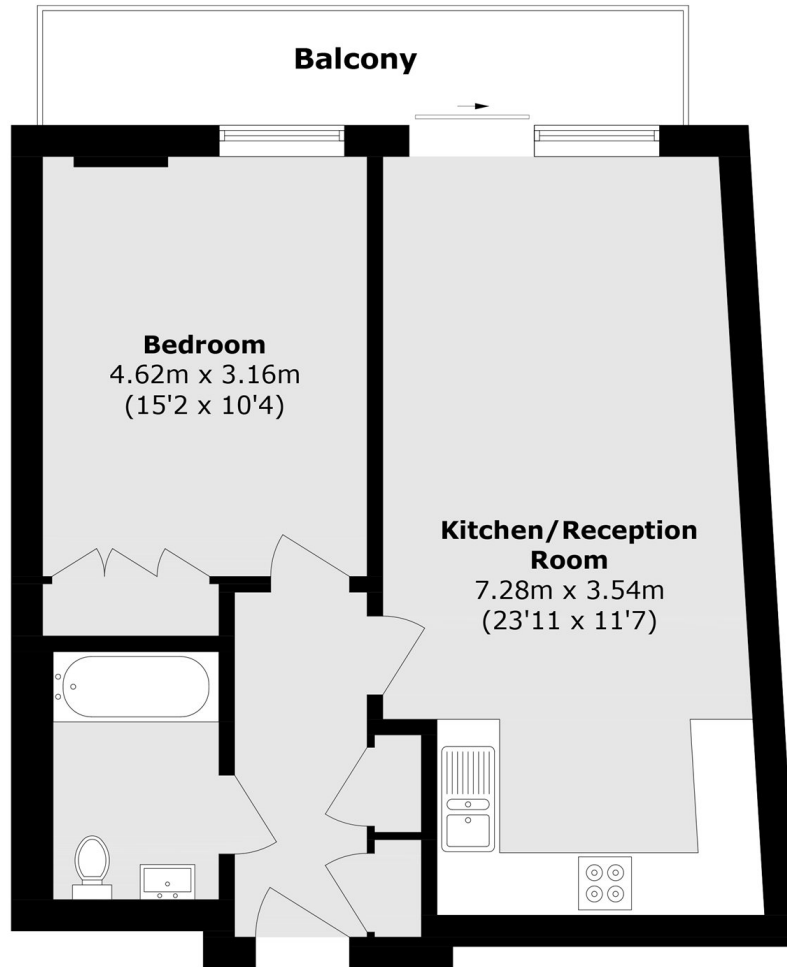
A one double-bedroom lateral apartment situated in the sought after Parkside development. Comprising an open plan reception/kitchen, large double bedroom, family bathroom and private outside space (balcony). The property further benefits from a concierge and allocated off-street parking.

Parkside is located almost equidistant between Wandsworth Common, Clapham Common and the green spaces of Battersea Park. Transport links are excellent with Clapham Junction around the corner to take you to the city in minutes and the amenities of St. Johns Hill/Road and Northcote Road are a short stroll away. The beautiful river walks along the Thames are around the corner.

Features

- Open Plan Living
- One Double Bedroom
- Family Bathroom
- Private Balcony
- Allocated Parking Space
- Concierge

Plough Road, London, SW11



Total area (approx.): 48.9 sq. m (526.3 sq. ft)
Balcony area (approx.): 6.7 sq. m (72.1 sq. ft)