



Maclaren Way

, Wickford, SS12 9QF

Guide Price £325,000

*** GUIDE PRICE £325,000 - £350,000 ***

Located in the popular Maclaren Way, Wickford, this two-bedroom end of terrace home presents an excellent opportunity for first-time buyers, downsizers, or investors alike.

The property offers a bright and welcoming reception space, leading through to a kitchen/diner, ideal for both everyday living and entertaining. To the rear, a conservatory provides additional living space and enjoys views over the garden.

Upstairs, there are two well-proportioned bedrooms and a 3 piece bathroom.

Externally, the property benefits from a generous rear garden, along with off-street parking for added convenience to the side.

Ideally situated, the home is within easy reach of local schools, shops, and transport links, making it a practical choice for modern living.

Offered to the market chain free, this is a fantastic opportunity to secure a home in a highly sought-after Wickford location.

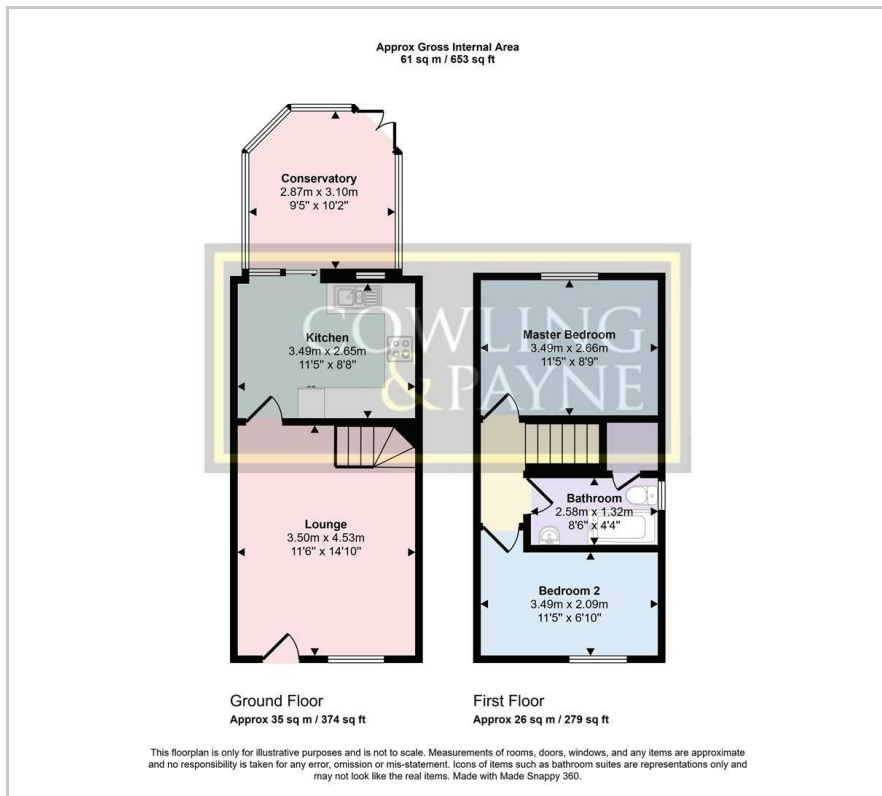
- Guide Price £325,000 - £350,000
- Chain free
- Two well-proportioned bedrooms
- End-terrace house
- Generous rear garden
- Off-street parking
- Popular Wickford location
- Close to schools, amenities & transport links
- Council Tax Band - C - Basildon
- Energy Performance Rating - C

Viewing

Please contact our Lettings Office on 01268 730707 if you wish to arrange a viewing appointment for this property or require further information.



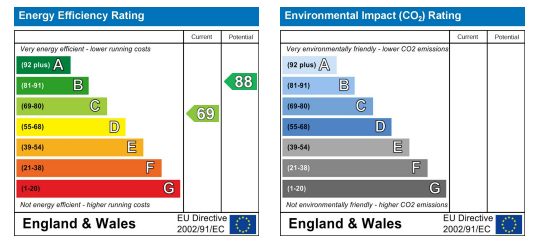
Floor Plan



Area Map



Energy Efficiency Graph



These particulars, whilst believed to be accurate are set out as a general outline only for guidance and do not constitute any part of an offer or contract. Intending purchasers should not rely on them as statements of representation of fact, but must satisfy themselves by inspection or otherwise as to their accuracy. No person in this firm's employment has the authority to make or give any representation or warranty in respect of the property.