

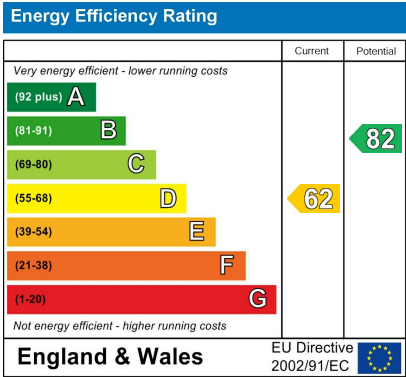
Bexley Street  
Price Guide £525,000





A charming Victorian terraced house situated in a highly sought-after location, perfectly positioned within easy reach of local pubs, shops and train stations. This well-presented home offers an inviting open-plan reception room. The kitchen/breakfast room provides a practical and sociable area, with direct access to the private garden. Upstairs, the property features two bedrooms & family bathroom.

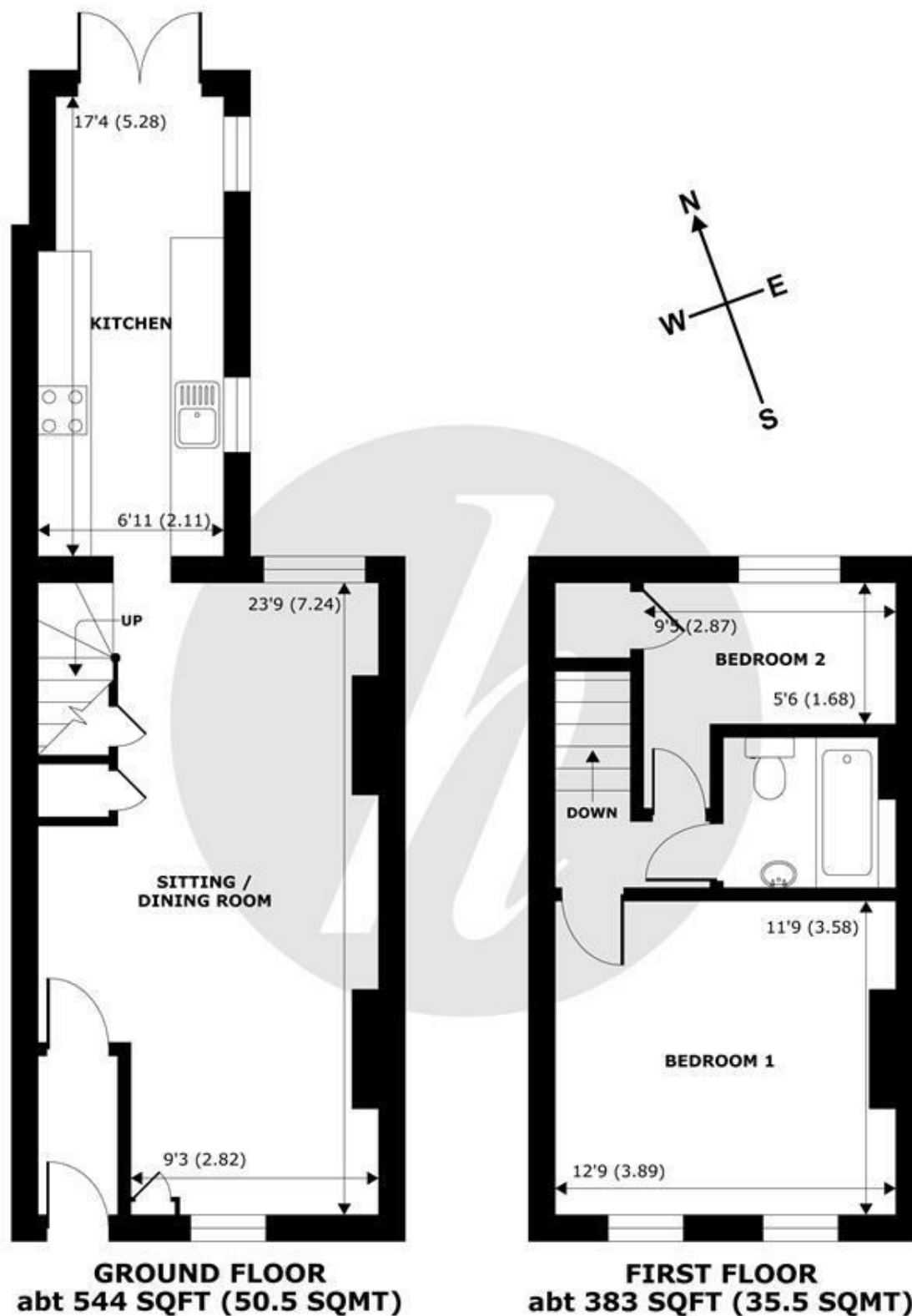
The property is offered to the market Chain Free

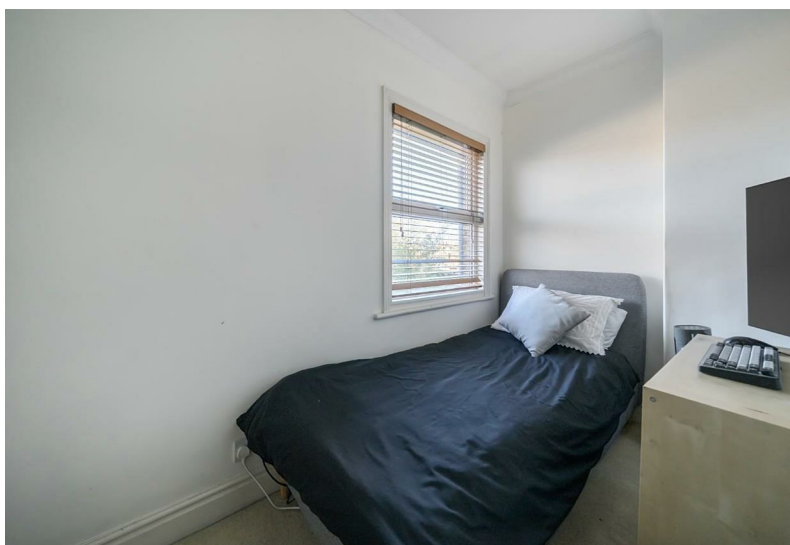
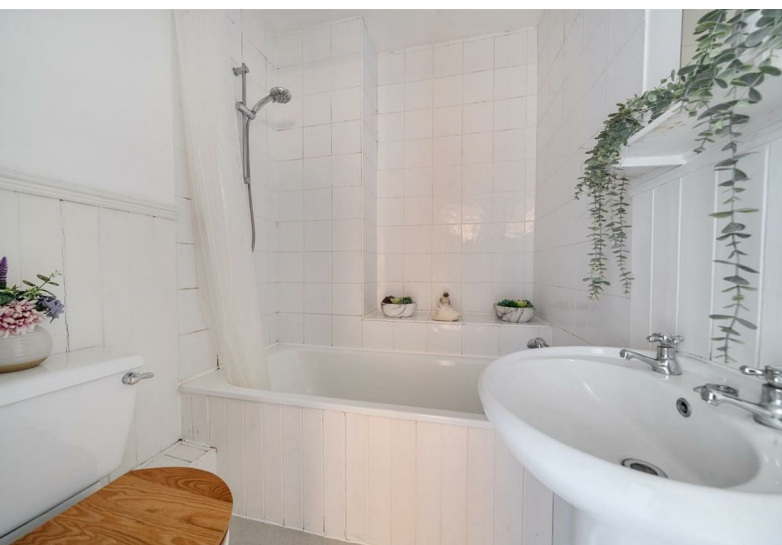


### Features

- Victorian Terraced House
- Close to Local Pubs, Shops & Train Stations
- Kitchen/ Breakfast Room
- Permit Parking
- Private Garden
- Sought after Location
- Open Plan Reception Room
- Two Bedrooms
- No Onward Chain

NOT TO SCALE





11 High Street, Windsor, Berkshire, SL4 1LD,  
T: 01753 833 118 | E: [info@hardings.co.uk](mailto:info@hardings.co.uk)  
[www.hardings.co.uk](http://www.hardings.co.uk)

