



## Ashvale Road, SW17

£4,200 PCM

A Victorian four bedroom house comprising of reception room and eat-in kitchen with bi-fold doors leading to a landscaped garden. The principle bedroom benefits from a walk-in wardrobe and an en-suite

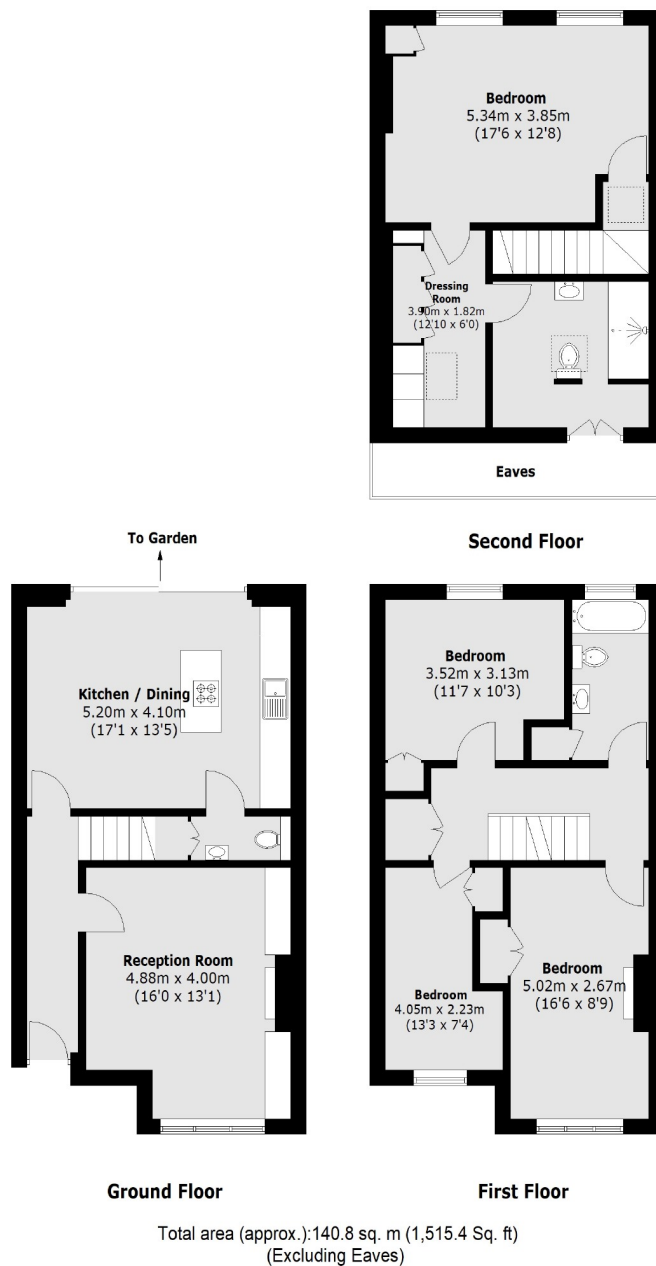
- Victorian House
- Separate Reception Room
- Large Eat In Kitchen
- Four Double Bedrooms
- Two Bathrooms
- Private Rear Garden

For further information on the costs associated with renting a property, please pop into our office or visit our website.



Ashvale Road is located in the heart of Tooting Broadway with great transport links and the many bars, shops and restaurants are near by.





Jacksons Tooting  
26 Tooting Bec Road  
London  
SW17 8BD  
020 8767 0522  
tooting.lettings@jacksonsestateagents.com

Energy Rating: We aim to make our particulars both accurate and reliable. However they are not guaranteed; nor do they form part of an offer or contract. If you require clarification on any points then please contact us, especially if you're traveling some distance to view. Please note that appliances and heating systems have not been tested and therefore no warranties can be given as to their good working order.