

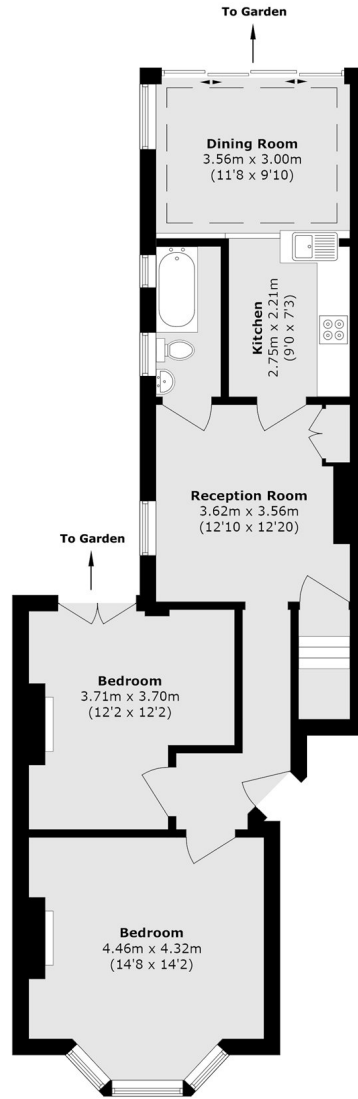


Brougham Road, W3

£550,000

This two bedroom period conversion garden flat offers in excess of 750 sq.ft of accommodation and further potential to extend (STPP). The flat is offered with no onward chain and share of the freehold.

Located within 200 metres of Acton Main Line Station (Elizabeth Line) and half a mile from Acton Central and Churchfield Road which has a range of independent cafés, bars and local amenities.



Total area (approx.): 73.4 sq. m (790.0 sq. ft)

Robertson Smith & Kempson Acton Sales
137 High Street, Acton,
London, W3 6LY
020 8896 3996
actonsales@robertsonsmithandkempson.co.uk

Energy Rating: D. We aim to make our particulars both accurate and reliable. However they are not guaranteed; nor do they form part of an offer or contract. If you require clarification on any points then please contact us, especially if you're traveling some distance to view. Please note that appliances and heating systems have not been tested and therefore no warranties can be given as to their good working order.