



23 Aspen Court, Rendlesham

Offers in Region of £140,000





23 Aspen Court

Rendlesham, Woodbridge

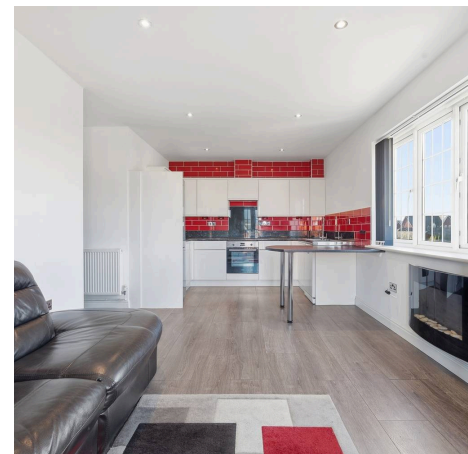
Council Tax band: A

Tenure: Leasehold

EPC Energy Efficiency Rating: C

EPC Environmental Impact Rating: B

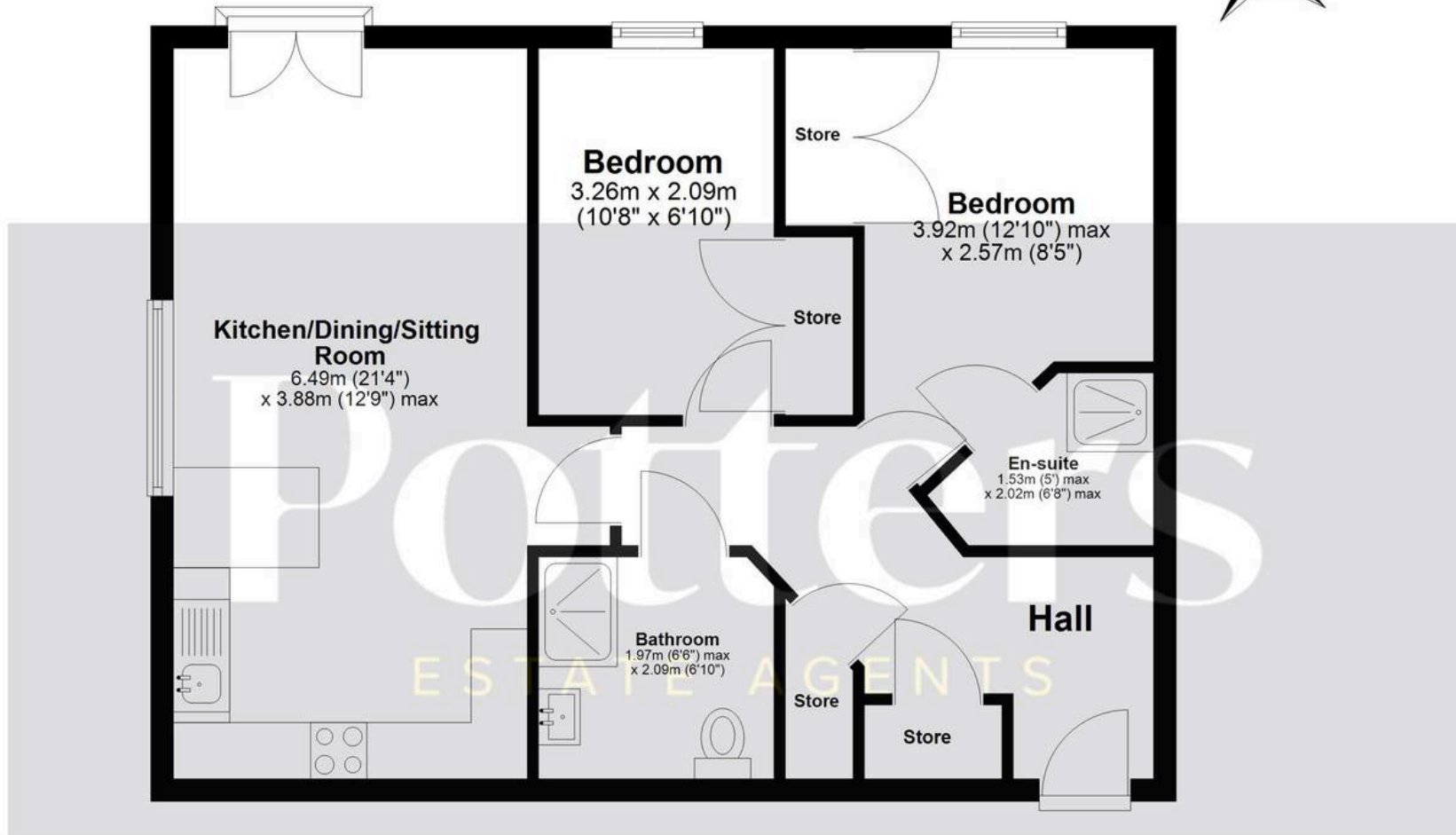
- No onward chain
- Immaculately presented throughout
- Top floor apartment
- Two well-proportioned bedrooms
- Open-plan kitchen, sitting and dining room
- Ensuite to principal bedroom
- Modern main shower room
- Allocated parking space
- Long lease with approximately 980 years remaining
- Popular Rendlesham village location





Second Floor

Approx. 55.5 sq. metres (597.6 sq. feet)
(excluding Balcony, Store)



Total area: approx. 55.5 sq. metres (597.6 sq. feet)

All measurements have been taken as a guide to prospective buyers only and are not precise. This plan is for illustrative purposes only and no responsibility for any error, omission or misstatement. The services, systems and appliances shown have not been tested and no guarantee as to their operability or efficiency can be given. Measurements may have been taken from the widest area and may include wardrobe/cupboard space. No guarantee is given to any measurements including total areas. Buyers are advised to take their own measurements.

© @modephotouk | www.modephoto.co.uk
Plan produced using PlanUp. □

Aspen Court, Rendlesham



Potters Estate Agents

Potters Estate Agents, 6 Market Hill - IP12 4LU

01394 447487 • enquiries@pottersestateagents.com • www.pottersestateagents.com/