



Glisk, Ellesmere Port, CH65

£1,350 Per Month

Life at Glisk is all about balance, stylish, energy-efficient homes in a well-connected spot, where canal-side calm meets the buzz of Ellesmere Port. With 2, 3, and 4-bedroom homes to rent, Glisk is ideal for anyone looking to enjoy modern living on the edge of the Wirral Peninsula, just a short drive from Chester and Liverpool.

The Ten50 is a modern three-bedroom home to rent, thoughtfully designed to offer flexible, comfortable living across both floors.

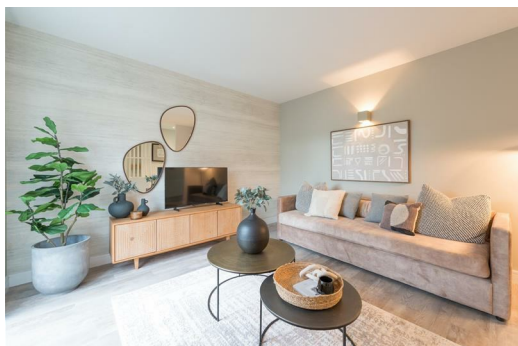
Downstairs, the fully open-plan layout features a sleek kitchen and dining area at the front, with a spacious living room at the rear, perfect for relaxing or entertaining. A cleverly positioned WC and utility room sit at the centre to maximise space, while full-height glass doors open onto a generous garden. VELFAC windows throughout flood the home with natural light and help maintain warmth year-round.

Upstairs, you'll find three double bedrooms, including a standout main bedroom with its own en-suite shower room and walk-in wardrobe. A stylish family bathroom completes the floor, offering both convenience and comfort for busy mornings or laid-back evenings.

Each home is designed with your lifestyle in mind, flexible layouts, spacious gardens, and smart tech that make day-to-day life easier. Whether it's retail therapy at Cheshire Oaks, dinner and drinks in town, or a quiet walk along the canal, you've got everything you need right on your doorstep.

And when it's time to get moving, Glisk makes it easy. With strong transport links across the North West and beyond, you're perfectly placed for commuting, weekends away, or visiting nearby cities. Modern living, made simple.

*Appliances included refers specifically to the oven, hob, extractor hood, and fridge freezer. No other appliances are included unless otherwise stated.





Energy Efficiency Rating		Environmental Impact (CO ₂) Rating	
Current	Potential	Current	Potential
84	93	B	B
83-84	85-92	C	C
82-83	86-84	D	D
81-82	87-83	E	E
80-81	88-82	F	F
79-80	89-81	G	G