



RESIDE

MANCHESTER

A102 Railings 5 Shale Lane
Middlewood Locks, Salford, M5 4BU

£1,550 PCM



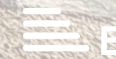
2



2



1



B

A102 Railings 5 Shale Lane

Middlewood Locks, Salford, M5 4BU

Set within the award-winning canalside neighbourhood of Middlewood Locks, this ground floor apartment is part of a new phase, now available for immediate move-in.

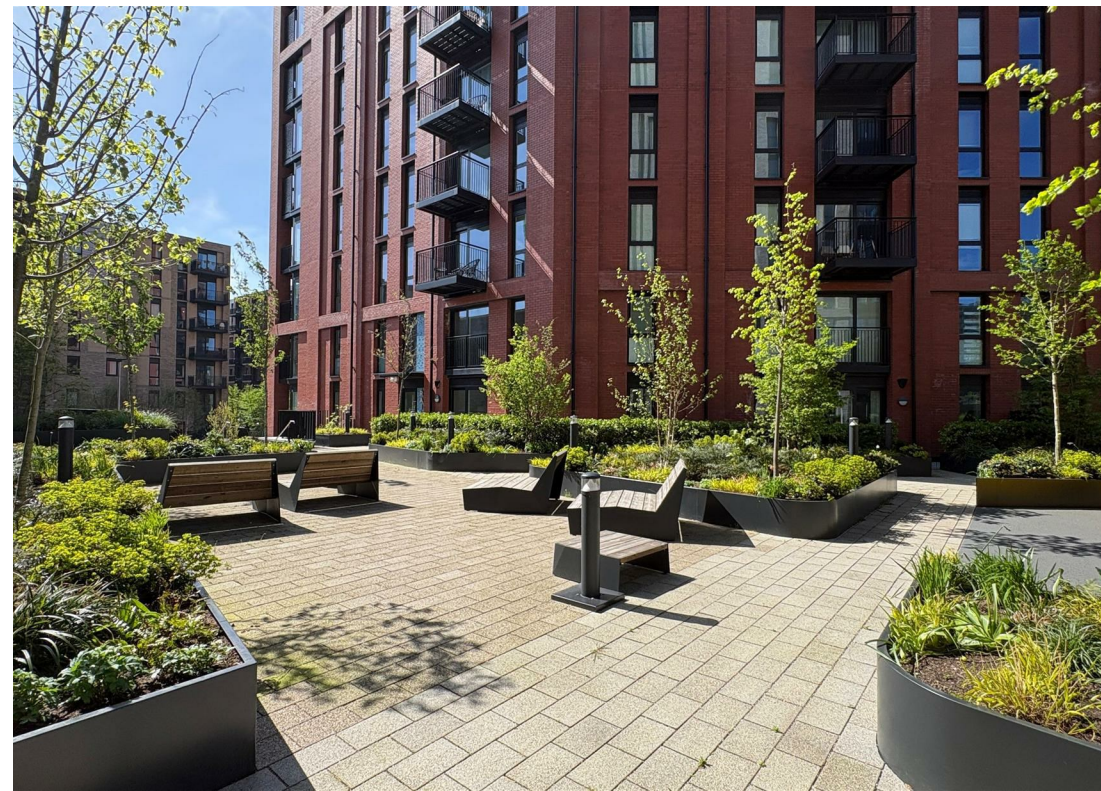
The property offers two bedrooms and two bathrooms, finished to a high standard throughout. Features include a fully fitted kitchen with integrated appliances, modern bathrooms, double-glazed windows, and access to a secure parcel delivery system.

The apartment also benefits from a large private terrace, providing useful outdoor space.

Surrounded by vibrant waterside surroundings and landscaped green spaces, this apartment offers modern living in one of the area's most sought-after developments.

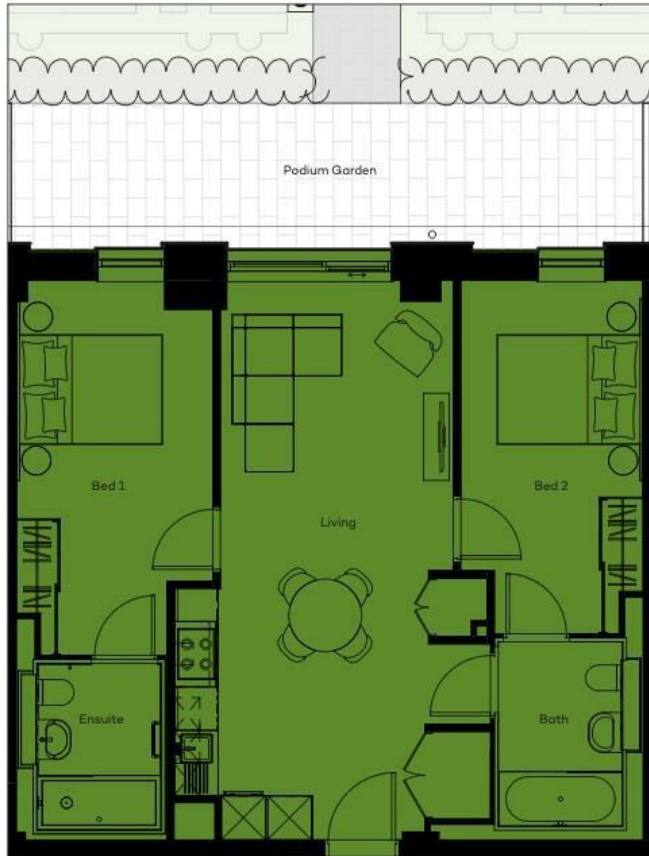
Contact our rental team on 0161 837 2840 today to register your interest and secure your new home.

- Brand New Development
- Two Double Bedroom, Two Bathroom
- Furnished And Unfurnished Options Available
- Canalside Neighbourhood
- Available Immediately
- EPC Rating B
- Secure Parcel System
- 10 Minute Walk Into Manchester City Centre
- Spacious Private Terrace
- Pet Friendly





Floor Plan



APARTMENT A102 - BLOCK A

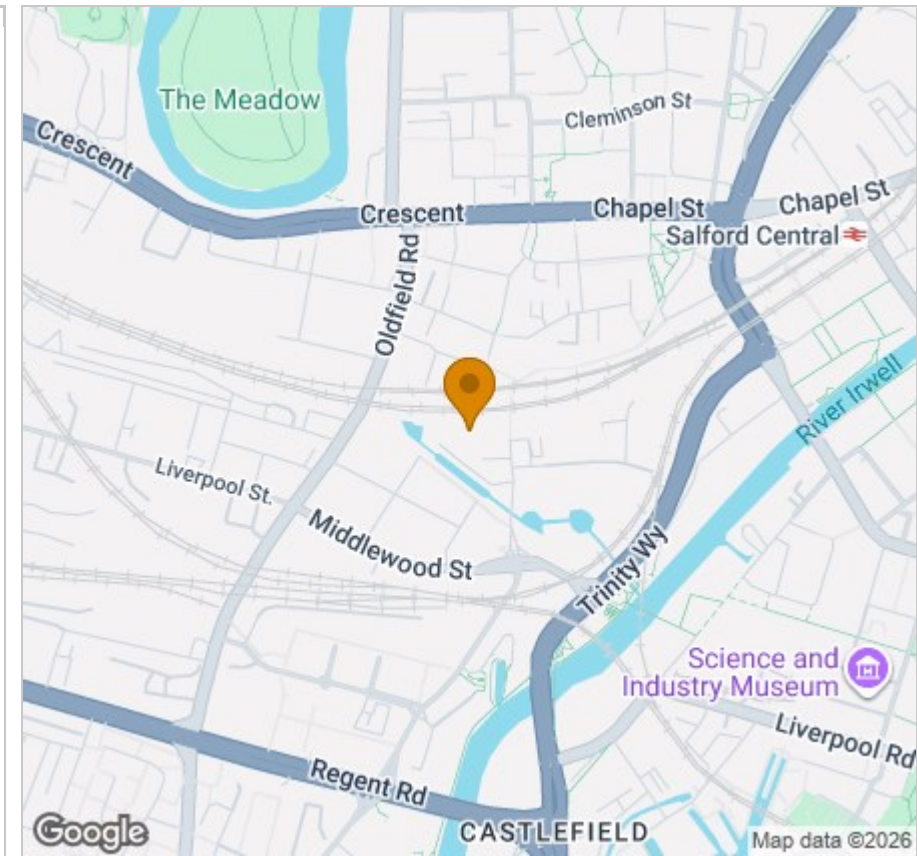
Viewing

Please contact our Reside Manchester Office on 0161 837 2840 if you wish to arrange a viewing appointment for this property or require further information.

These particulars, whilst believed to be accurate are set out as a general outline only for guidance and do not constitute any part of an offer or contract. Intending purchasers should not rely on them as statements of representation of fact, but must satisfy themselves by inspection or otherwise as to their accuracy. No person in this firm's employment has the authority to make or give any representation or warranty in respect of the property.

Upper Ground, 4 Jordan Street, Manchester, Greater Manchester, M15 4PY
 Tel: 0161 837 2840 Email: info@residemanchester.com www.reside-property.com

Area Map



Energy Efficiency Graph

