



3, Musley Lane, Ware
SG12 7EN

Offers In Excess Of £350,000



stevenoates.com



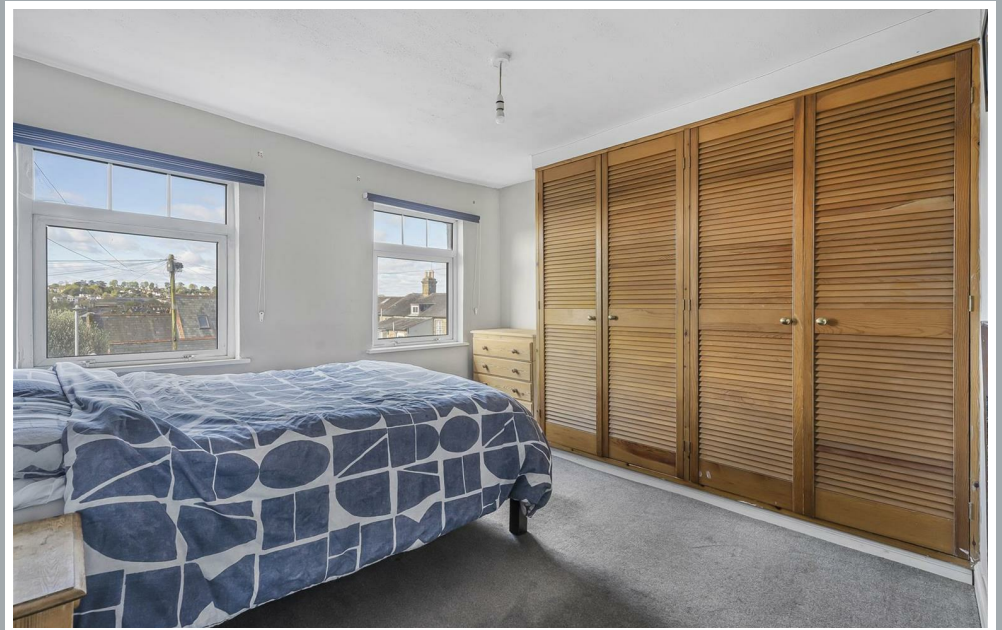
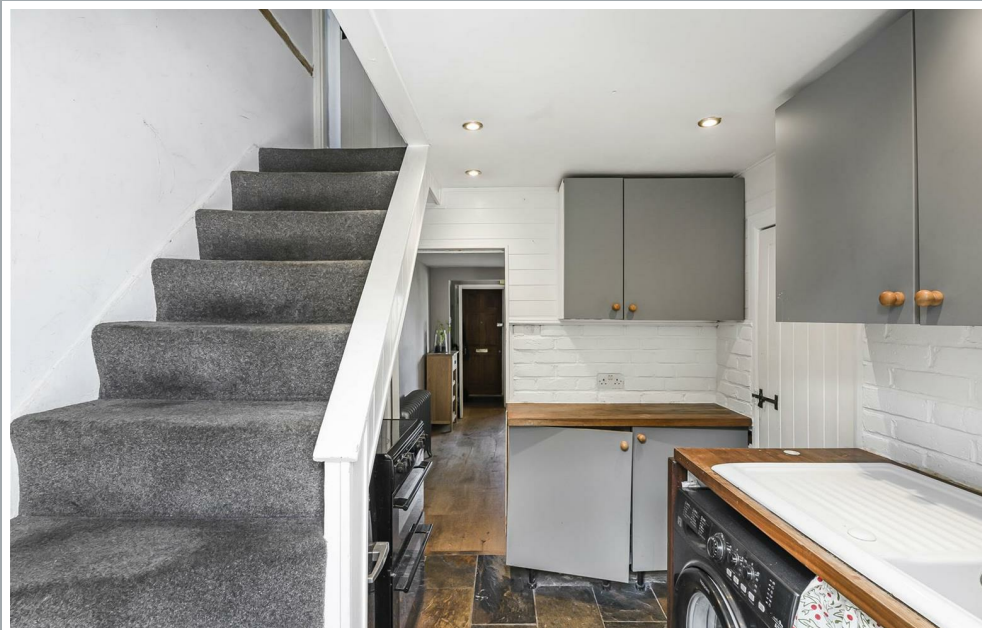
3 Musley Lane, Ware, Hertfordshire, SG12 7EN

Steven Oates are delighted to present this two bedroom character cottage located just a short walk from Ware's Town Centre. The property is in good condition throughout and benefits from a stunning rear garden, refitted kitchen & bathroom and part upvc double glazing. Early viewing strongly recommended!

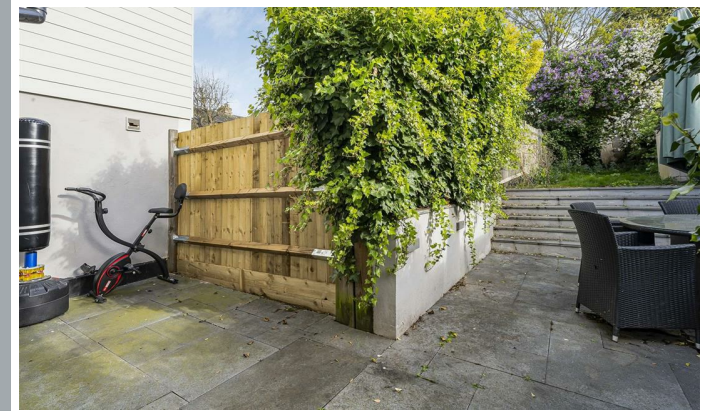
Located within comfortable walking distance of Ware's town centre and mainline railway station serving London's Liverpool Street and Ware High Street's amenities to include restaurants, pubs, cafes and supermarkets.



70 Fore Street, Hertford, Hertfordshire, SG14 1BY

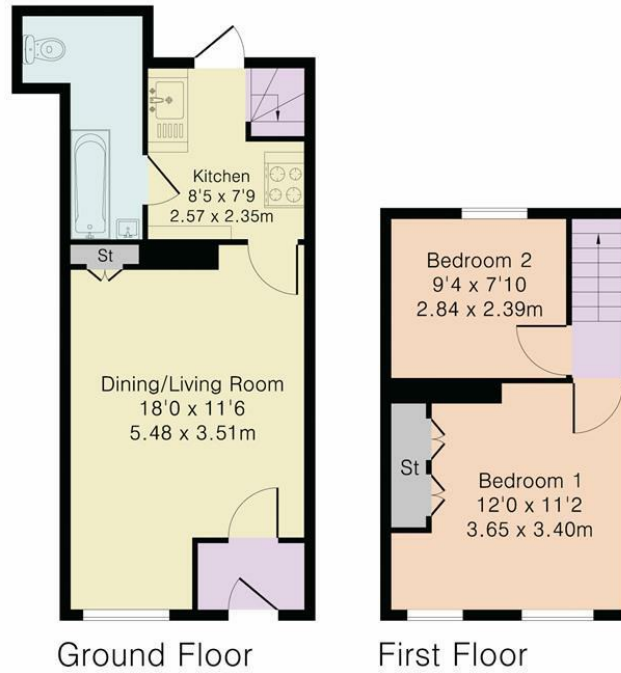


70 Fore Street, Hertford, Hertfordshire, SG14 1BY



70 Fore Street, Hertford, Hertfordshire, SG14 1BY

Approximate Gross Internal Area 546 sq ft – 51 sq m
Ground Floor Area 324 sq ft – 30 sq m
First Floor Area 222 sq ft – 21 sq m



Although Pink Plan Ltd ensures the highest level of accuracy, measurements of doors, windows and rooms are approximate and no responsibility is taken for error, omission or misstatement. These plans are for representation purposes only as defined by RICS code of measuring practise. No guarantee is given on total square footage of the property within this plan. The figure icon is for initial guidance only and should not be relied on as a basis of valuation.



These particulars, whilst believed to be accurate are set out as a general outline only for guidance and do not constitute any part of an offer or contract. Intending purchasers should not rely on them as statements of representation of fact, but must satisfy themselves by inspection or otherwise as to their accuracy. No person in this firms employment has the authority to make or give any representation or warranty in respect of the property.

