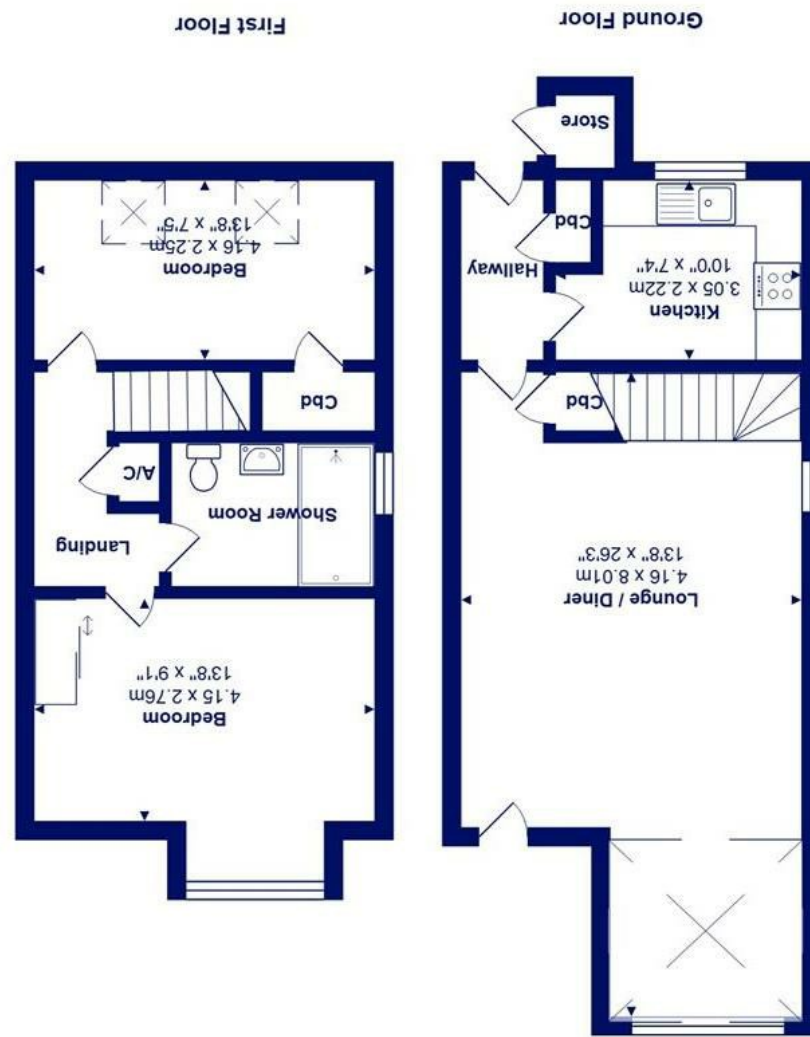




Total Area: 75.2 m² ... 809 ft²
All measurements are approximate and for display purposes only



12 Utrecht Court, Purewell, BH23 1HP

£295,000

Mitchells
1963 — TODAY

A delightful two-bedroom mews style townhouse of approximately 809 sqft featuring a lovely private garden, spacious living/dining room and modern, refitted shower-room.

Situated on the popular Avon Village development in the historic district of Purewell. Built in the late 1980's the property is located within walking distance to Christchurch Town Centre, local shops, doctors surgery and bus routes. Vacant Possession.

- Mews style freehold end terraced house of approximately 809 sqft
- Two first floor bedrooms
- Refitted shower-room
- Spacious lounge/dining room with access to the garden
- Modern kitchen with some integrated appliances
- Private rear garden with storage shed
- Gas central heating and uPVC double glazed windows
- Convenient location within walking distance to local amenities and Christchurch Town Centre
- Vacant Possession

EPC Rating Band: C

Council Tax Band: C

Freehold

Successful buyers will be required to complete online identity checks provided by Lifetime Legal. The cost of these checks is £45 inc. VAT per purchase which is paid in advance, directly to Lifetime Legal. This check verifies your identity in line with our obligations as stipulated by our regulatory body, HMRC

