



Flat 5 60 Foxglove Way
Wallington, SM6 7JU
Guide price £265,000



Flat 5 60 Foxglove Way

Wallington, SM6 7JU

Situated in a popular modern development close to Hackbridge mainline station and a wealth of shops is this stunning two bedroom apartment. The property benefits from a 21ft lounge/diner, a modern kitchen, allocated parking, a dressing area/washroom and a lease in excess of 150 years.

Accommodation

Security entryphone to

Communal hallway, stairs to 2nd floor landing.

Wooden front door to

Entrance hall

Large storage cupboard, wall mounted entryphone, wall mounted fuse board, coved ceiling, loft access.

Lounge/diner, 21'0" X 10'3"

Contemporary fireplace with bowl and pebble insert, UPVC double glazed bay window to rear aspect, feature arch recess, coved ceiling, dado rail, separate dining area.

Kitchen, 8'6" at 7'0"

Worksurfaces with drawers and cupboards below, matching wall units, stainless steel sink with chrome mixer tap, inset gas hob with extractor fan above, space and plumbing for washing machine, integrated fridge/freezer, part tiled walls, UPVC double glazed window to rear aspect.

Bedroom one, 11'1" X 8'5"

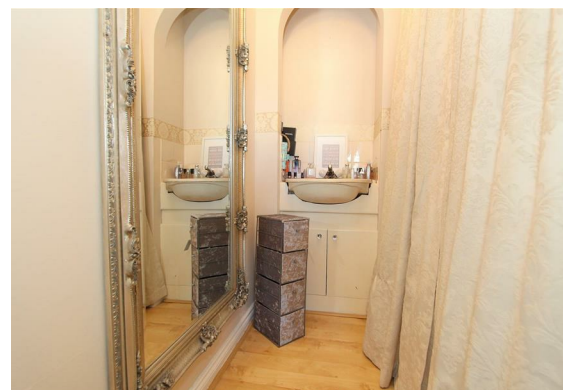
UPVC double glazed window to front aspect, coved ceiling, archway to





Walk-in dressing area, 6'5" X 4'8"
Clothes hanging area, wash hand basin with chrome mixer tap.

Bedroom two, 11'2" X 5'8"
UPVC double glazed window to front aspect, built-in wardrobe, coved ceiling.



Bathroom
Modern three-piece suite comprising panel enclosed bath with Victorian style chrome mixer tap and shower attachment, wash handbasin With chrome taps, low-level flash WC, tiled walls, tiled effect flooring, cupboard housing hot water tank and shelving.

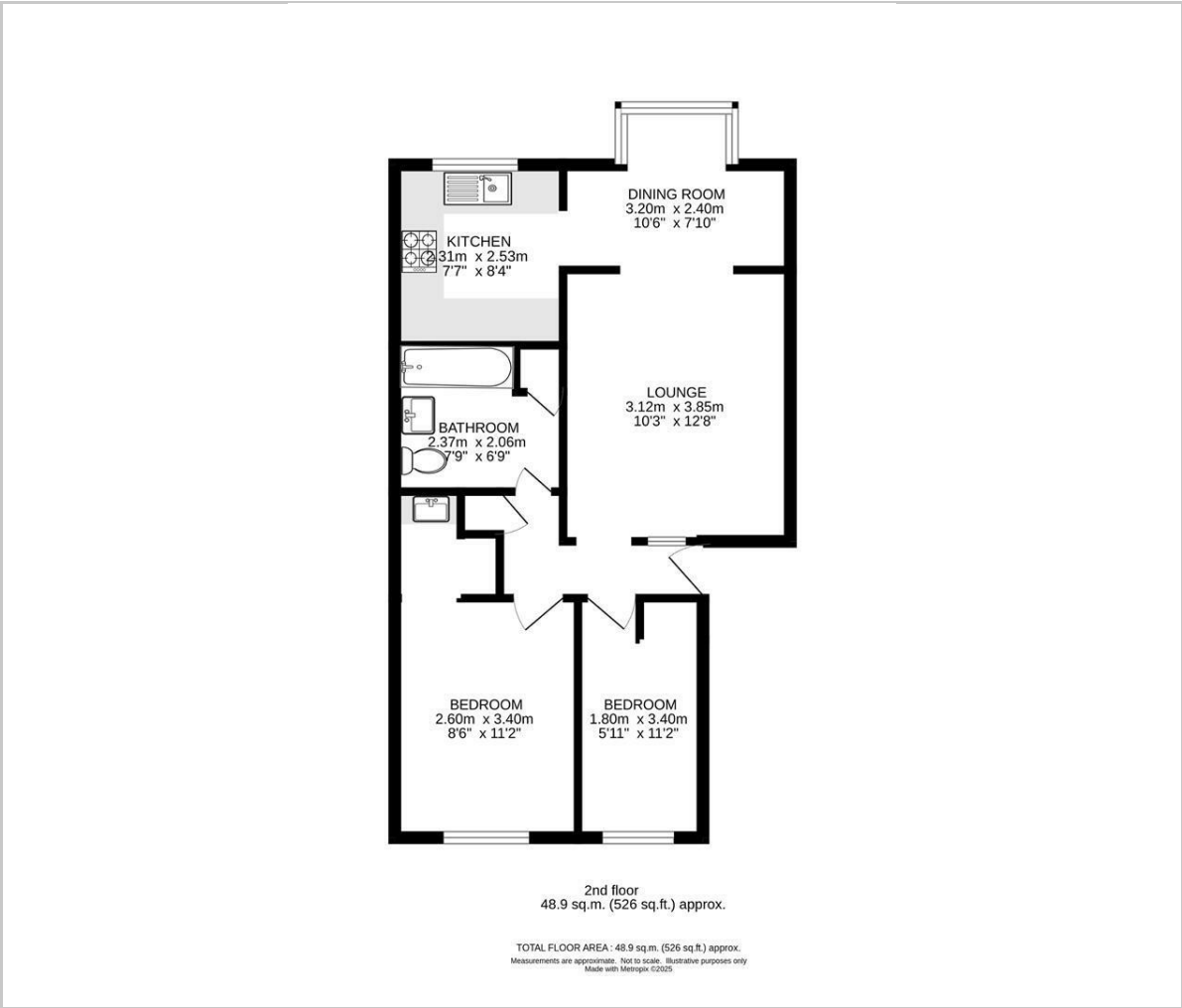
Outside
Allocated and visitors parking as well as well-kept communal grounds.



BUYER'S INFORMATION
Under UK law, estate agents are legally required to conduct Anti-Money Laundering (AML) checks on buyers and sellers to comply with regulations. These checks are mandatory, and estate agents can face penalties if they fail to perform them. We use the services of a third party to help conduct these checks thoroughly. As such there is a charge of £36 including vat, per person. Please note, we are unable to issue a memorandum of sale until these checks are complete



Floor Plan

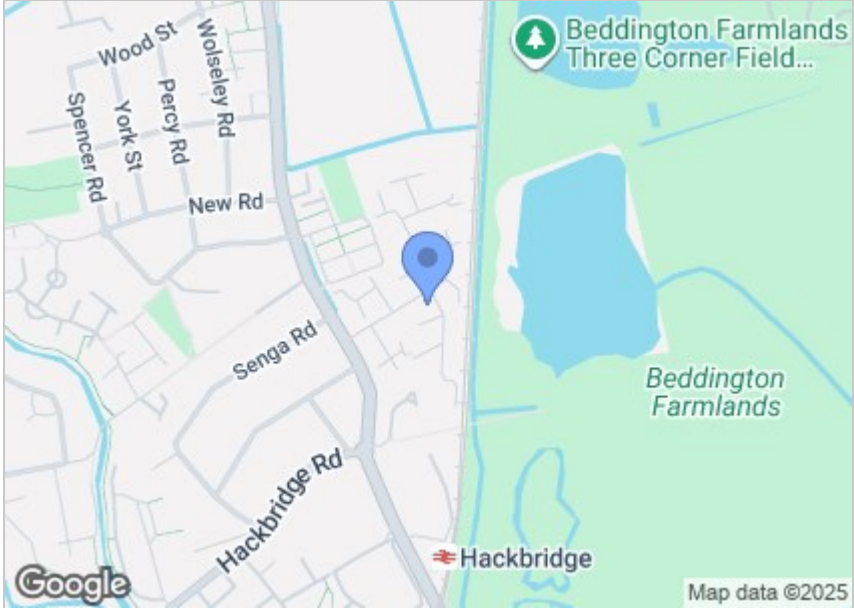


Viewing

Please contact our Cromwells Office on 0208 647 4422 if you wish to arrange a viewing appointment for this property or require further information.

These particulars, whilst believed to be accurate are set out as a general outline only for guidance and do not constitute any part of an offer or contract. Intending purchasers should not rely on them as statements of representation of fact, but must satisfy themselves by inspection or otherwise as to their accuracy. No person in this firms employment has the authority to make or give any representation or warranty in respect of the property.

Area Map



Energy Efficiency Graph

