



Connells

Denby Dale
Wellingborough



Property Description

*** This four bedroom detached home offers a lot of accommodation in our listers opinion! The property benefits from three reception rooms, kitchen and generous utility room, ground floor shower room as well as first floor bathroom, well maintained rear garden, garage and block paved driveway! ***

Entrance Hall

Double glazed door to front elevation.

Lounge

Double glazed box bay window to front elevation, wood burner and radiator.

Dining Room

Double glazed patio doors to rear elevation, under stairs storage cupboard and radiator.

Conservatory

Double glazed French doors to side elevation and double glazed windows to rear and side elevations.

Kitchen

Double glazed window to rear elevation. Fitted with a range of wall and base units with work surfaces over, stainless steel sink drainer and tiling to water sensitive areas. Electric double oven and hob with cooker hood over. Integrated dishwasher, fridge freezer and microwave.

Utility Room

Double glazed door to rear elevation. Fitted with a range of wall and base units with work surfaces over, stainless steel sink drainer and tiling to water sensitive areas. Boiler and plumbing for washing machine.

Ground Floor Shower Room

Shower cubicle, low level wc and vanity wash hand basin with tiling to water sensitive areas.

First Floor Landing

Loft access.

Bedroom One

Double glazed box bay window to front elevation, built in wardrobes and radiator,

Bedroom Two

Double glazed window to rear elevation, built in wardrobes and radiator,

Bedroom Three

Double glazed window to front elevation and radiator.

Bedroom Four

Double glazed window to rear elevation and radiator.

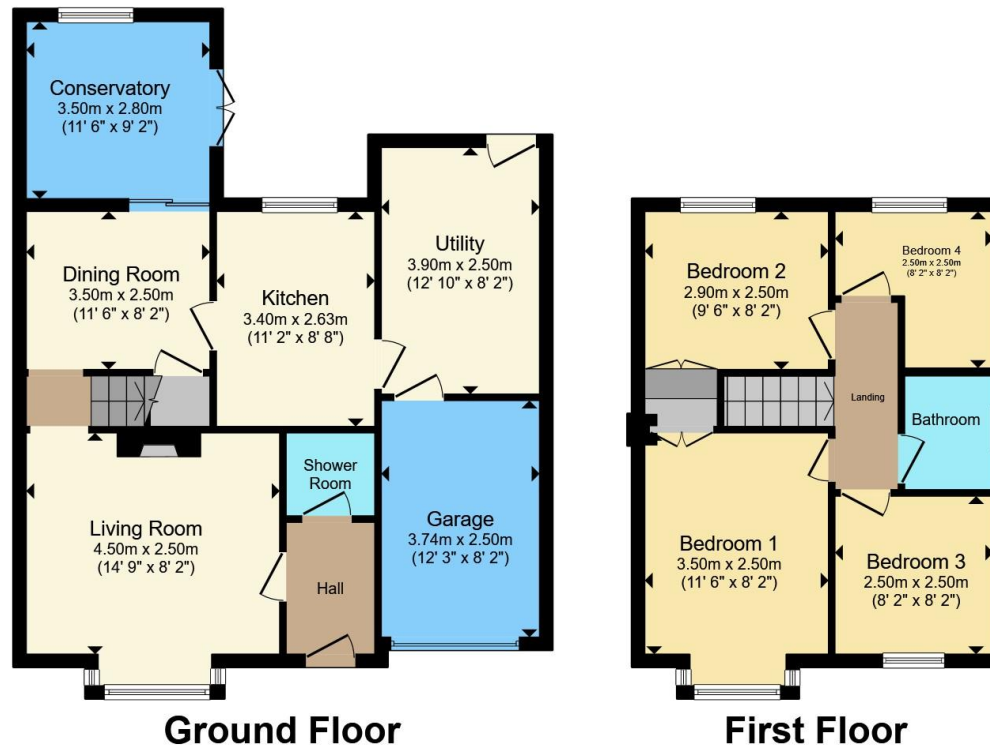
Bathroom

Double glazed window to side elevation. Bath with shower over, low level wc and vanity wash hand basin with full tiling and radiator.









Total floor area 107.4 m² (1,156 sq.ft.) approx

This floor plan is for illustrative purposes only. It is not drawn to scale. Any measurements, floor areas (including any total floor area), openings and orientation are approximate. No details are guaranteed, they cannot be relied upon for any purpose and they do not form part of any agreement. No liability is taken for any error, omission or misstatement. A party must rely upon its own inspection(s). Powered by www.propertybox.io



To view this property please contact Connells on

T 01933 312 363
E rushden@connells.co.uk

66 High Street
 RUSHDEN NN10 0PJ

EPC Rating: Council Tax
 Awaited Band: D

Tenure: Freehold

view this property online connells.co.uk/Property/RDN406034



1. MONEY LAUNDERING REGULATIONS Intending purchasers will be asked to produce identification documentation at a later stage and we would ask for your co-operation in order that there will be no delay in agreeing the sale. 2. These particulars do not constitute part or all of an offer or contract. 3. The measurements indicated are supplied for guidance only and as such must be considered incorrect. Potential buyers are advised to recheck measurements before committing to any expense. 4. We have not tested any apparatus, equipment, fixtures, fittings or services and it is in the buyers interest to check the working condition of any appliances.

Connells Residential is registered in England and Wales under company number 1489613, Registered Office is Cumbria House, 16-20 Hockliffe Street, Leighton Buzzard, Bedfordshire, LU7 1GN. VAT Registration Number is 500 2481 05.

See all our properties at www.connells.co.uk | www.rightmove.co.uk | www.zoopla.co.uk

Property Ref: RDN406034 - 0003