



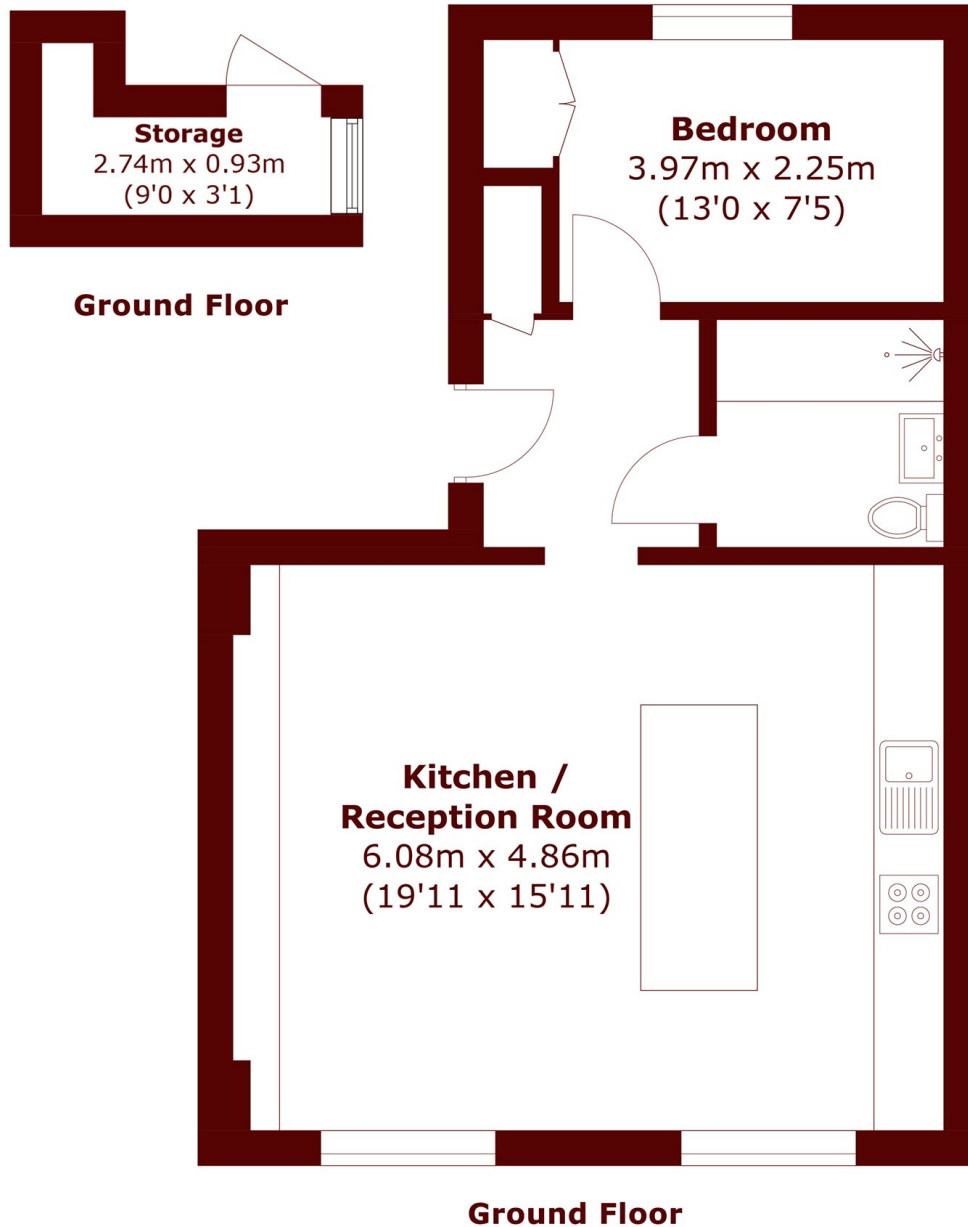
Durham Terrace, W2

£879,000



- Additional External Storage
- No Onward Chain
- Share Of Freehold
- Immaculate Condition

- Enviable Location
- Ground Floor



Total area (approx.): 47.5 sq. m (511.3 sq. ft)
External Storage area (approx.): 2.9 sq. m (31.2 sq. ft)

Marsh & Parsons Notting Hill

2-6 Kensington Park Road,
London, W11 3BU
020 7313 2890