

MUNDAY'S

Queens Road, New Cross

£535,000



Stylish two double bedroom penthouse apartment of 683 square feet, with a Freehold-share and its own garden (accessed via the side of the building), on the second floor of a grand Victorian semi.

You are close to both New Cross Gate (six minutes on foot) and Queens Road Peckham (10) stations, within Telegraph Hill Conservation Area.

The impressive building was sympathetically converted to a very high standard in 2019; when four spacious, architecturally-designed apartments were created from a dilapidated old single dwelling, with really pleasing finishing and details - such as old school style radiators, Farrow & Ball/Little Greene wall and woodwork colours, sash windows, stripped floorboards, built-in storage and original fireplaces.

Munday's Estate Agents Ltd.
2 Mary Boast Walk
London SE5 8SP
020 3318 8900

www.mundays.com

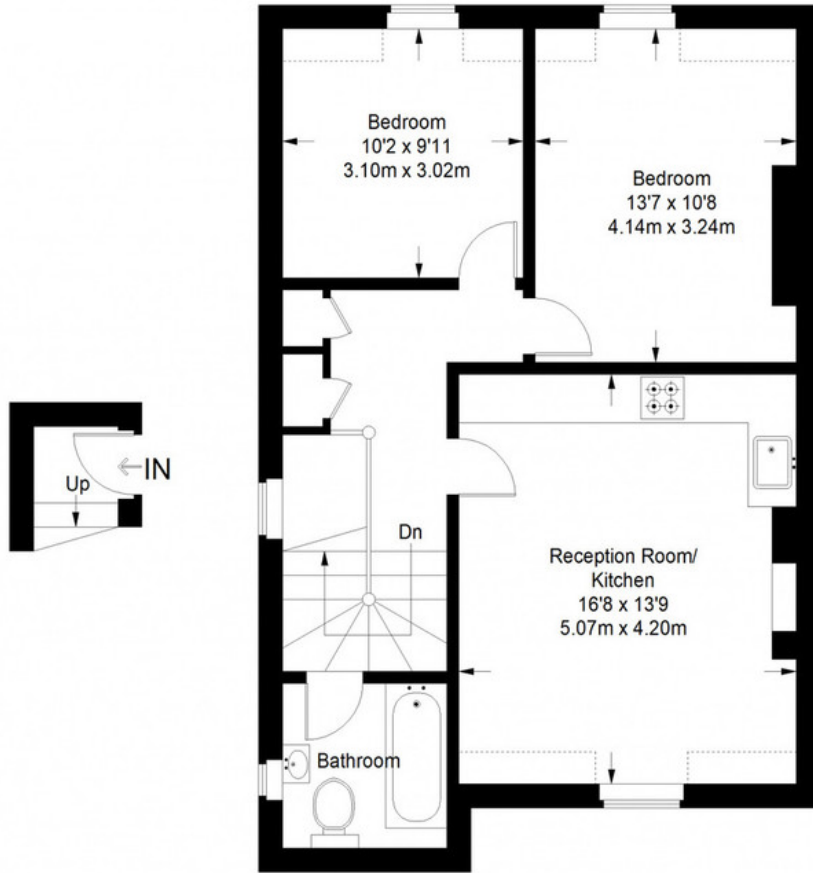
MUNDAY'S



Munday's Estate Agents Ltd.
2 Mary Boast Walk
London SE5 8SP
020 3318 8900


www.mundays.com

Queens Road



First Floor = 18 sq ft

Second Floor = 665 sq ft

 = Reduced headroom below 1.5 m / 5'0

Approximate Gross Internal Area
 FIRST FLOOR = 18 sq ft / 1.67 sq m
 SECOND FLOOR (Excluding Reduced Headroom) = 633 sq ft / 58.81 sq m
 (Reduced Headroom) = 32 sq ft / 2.97sq m
 Total = 683 sq ft / 63.45 sq m



This plan is for layout guidance only. Not drawn to scale unless stated. Windows and door openings are approximate. Whilst every care is taken in the preparation of this plan, please check all dimensions, shapes and compass bearings before making any decisions reliant upon them. (ID357409)