



Websters  
estate agents



# Cassilis Road, Twickenham, TW1 1RU

Detached 5 bedroom home with driveway parking, access from both sides of the house to the 84ft west facing rear garden and no onward chain. Situated in a popular residential area just 0.3 miles from St Margarets village shops, cafes and train station and within 0.7 miles of St Stephens, St Mary's and Orleans Schools.

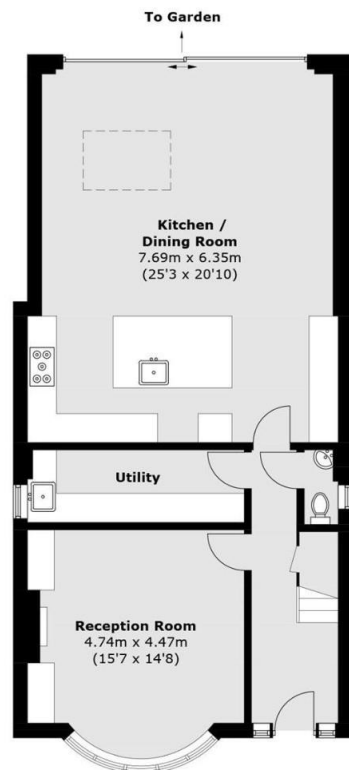
Extended, loft converted and completely refurbished to an impressive standard to offer 2033 sq ft of living space over 3 floors with a bespoke 367 sq ft studio/guest room with a kitchen and shower room in the garden, high specification fixtures, fittings and floorings, energy efficient heating, lighting and appliances, double glazed windows and doors, extensive built in storage and neutral decor throughout.

Entrance hallway leads to the bay fronted living room, the utility room, the w.c and the stunning open plan kitchen/dining/family room at the rear. This light filled room has a stylish integrated kitchen and adequate space for a dining table and seating. Full width sliding doors open onto the garden with a sun terrace and steps up to the lawn and purpose built studio room. On the first floor are 3 double bedrooms, all with built in wardrobes and the main with an ensuite bathroom, the family bathroom and stairs leading up to 2 further bedrooms with air conditioning units and a bathroom.

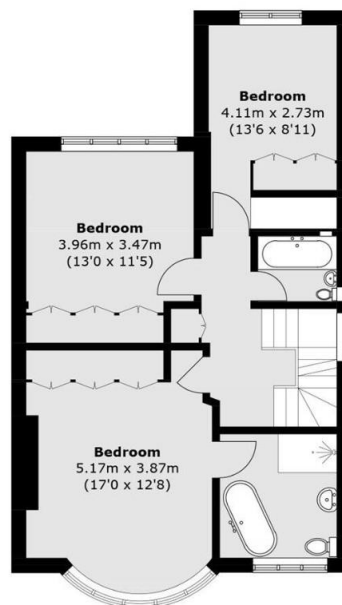
Located 0.5 miles from Thames riverside Old Deer Park. 0.8 miles from Richmond town centre and 0.9 miles from Twickenham town centre and station.  
EPC Rating C

- Detached 5 Bedroom Home
- Newly Extended, Loft Converted and Refurbished
- Impressive High Specification Throughout
- Landscaped West Facing Garden with Side Access
- 367 Sq Ft Garden Room with Kitchen and Shower Room
- Within 0.7 Miles of Popular Schools
- 0.3 Miles from Strawberry Hill Station
- No Onward Chain

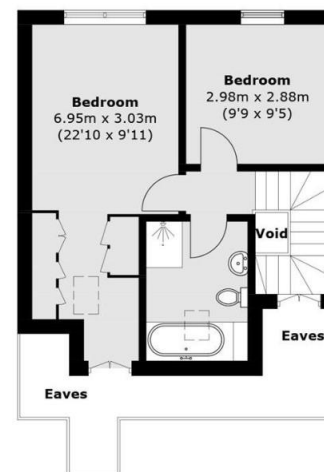
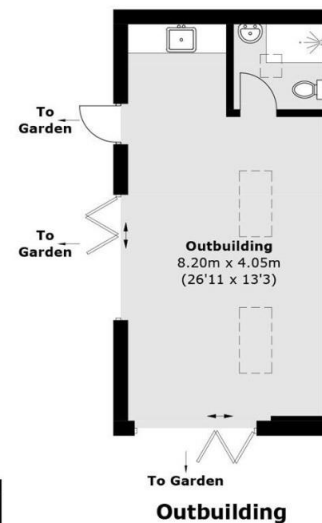




**Ground Floor**



**First Floor**



**Second Floor**

Total area (approx.): 188.9 sq. m (2,033.3 sq. ft)  
(Excluding Eaves / Void)  
Outbuilding: 34.1 sq. m (367.0 sq. ft)

**a** Websters Estate Agents 36 Broad Street, Teddington, Middlesex TW11 8QY

**t** 020 8614 6000

**e** sales@mywebsters.co.uk **w** mywebsters.co.uk

**Disclaimer**

These particulars, whilst believed to be accurate are set out as a general outline only for guidance and do not constitute any part of an offer or contract. Intending purchasers should not rely on them as statements of representation of fact, but must satisfy themselves by inspection or otherwise as to their accuracy. We have not carried out a detailed survey nor tested the services, appliances and specific fittings. Room sizes should not be relied upon for carpets and furnishings. The measurements given are approximate. No person in this firm's employment has the authority to make or give any representation or warranty in respect of the property.



