



WETHERELL
MAYFAIR'S FINEST PROPERTIES



SOUTH AUDLEY STREET, W1K

£2,950,000

A lateral two/three bedroom apartment with west facing balcony and views of Hyde Park.

Situated on the seventh floor of one of Mayfair's premier portered residences, this well-appointed two/three bedroom apartment offers refined living in an exceptional location. Boasting west-facing views towards Hyde Park, the property enjoys a privileged position within Chesterfield House, a handsome period building at the southern end of South Audley Street.

Measuring approximately 1,300 sq ft of lateral living space, the apartment is arranged to provide well-balanced and flexible accommodation. A standout feature is the elegant double reception room, with French doors opening onto a private west-facing balcony with views towards Hyde Park. The principal bedroom layout is generously proportioned and thoughtfully designed, creating a spacious suite. The current configuration allows for either two or three bedrooms, offering adaptability to suit both formal and informal living requirements. Properties on the favoured west side of Chesterfield House, especially those on the upper floors, rarely come to market.

CHESTERFIELD HOUSE WAS BUILT IN THE 1930'S AND IS LOCATED ON SOUTH AUDLEY STREET, JUST MOMENTS FROM HYDE PARK AND ALL THE AMENITIES OF MAYFAIR VILLAGE. THE NEAREST UNDERGROUND STATION IS GREEN PARK.



FEATURES

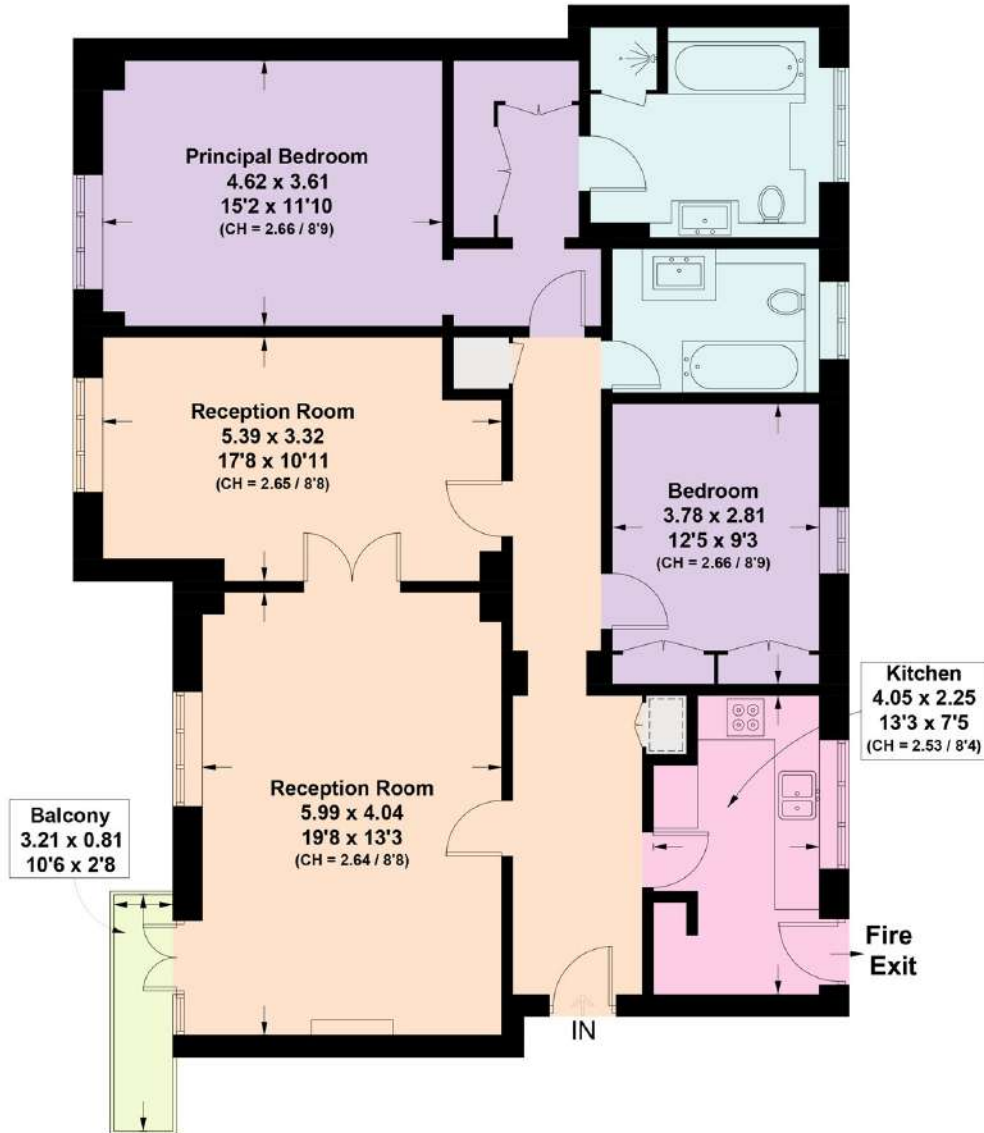
- Two/three bedrooms • Lateral • West facing balcony • 24hr Uniformed Porter • Share of Freehold • Lift •



SOUTH AUDLEY STREET, LONDON, W1K

Chesterfield House, W1K

Approximate Floor Area = 121.5 sq m / 1308 sq ft
Including Limited Use Area (2.1 sq m / 23 sq ft)



Seventh Floor

This plan is for layout guidance only. Not drawn to scale unless stated. Windows and door openings are approximate. Whilst every care is taken in the preparation of this plan, please check all dimensions, shapes and compass bearings before making any decisions reliant upon them. (ID1292672)



WETHERELL
MAYFAIR'S FINEST PROPERTIES

102 Mount Street,
London, W1K 2TH
T: 020 7529 5566
E: sales@wetherell.co.uk

We aim to make our particulars both accurate and reliable. However they are not guaranteed; nor do they form part of an offer or contract. If you require clarification on any points then please contact us, especially if you're traveling some distance to view. Please note that appliances and heating systems have not been tested and therefore no warranties can be given as to their working order.

wetherell.co.uk