



Flat 1, 8 Cromer Road, Leyton

Leyton

Guide Price £450,000



Flat 1, 8 Cromer Road

Leyton

Council Tax band: D

Tenure: Leasehold

EPC Energy Efficiency Rating: C

EPC Environmental Impact Rating: C

- Guide Price £450,000 - £500,000
- 2 Bedroom Ground Floor Flat
- Direct Access to Private Rear Garden
- 180 Years Remaining on the Lease
- Excellent Condition Throughout
- Short Walk to Francis Road
- Character Features





Living Room

12' 8" x 15' 8" (3.85m x 4.78m)

Kitchen

9' 9" x 12' 10" (2.96m x 3.90m)

Bathroom


5' 2" x 8' 1" (1.57m x 2.46m)

Bedroom

11' 6" x 10' 2" (3.51m x 3.10m)

Bedroom

14' 4" x 7' 7" (4.37m x 2.32m)

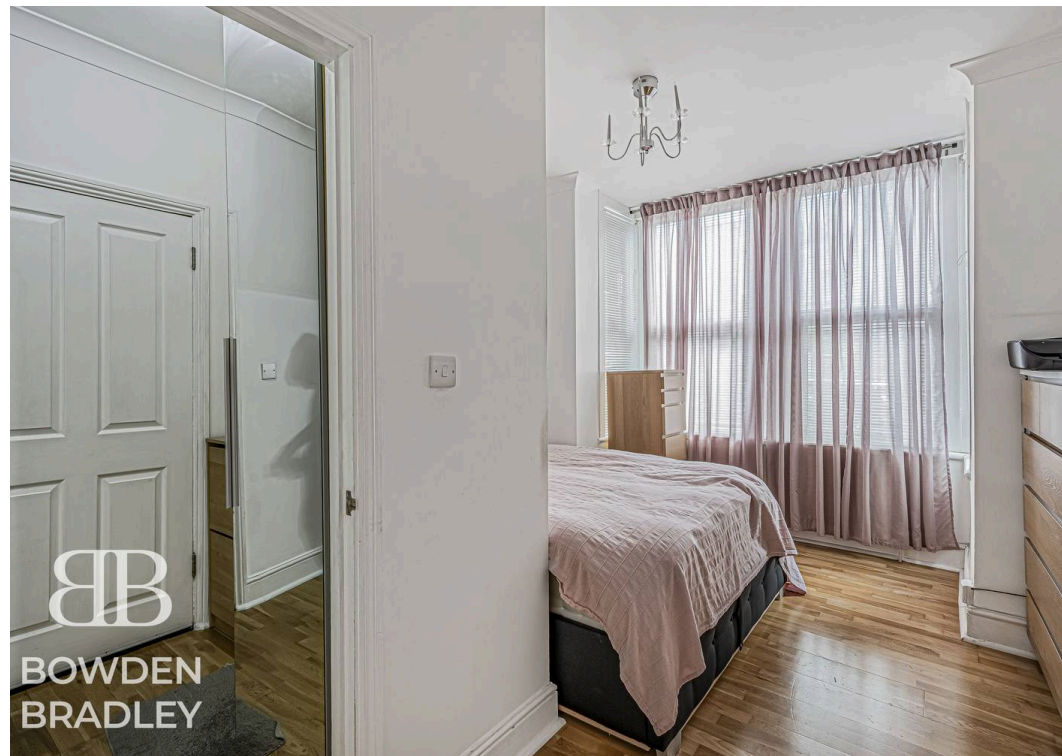

BOWDEN
BRADLEY




VDEN
DLEY

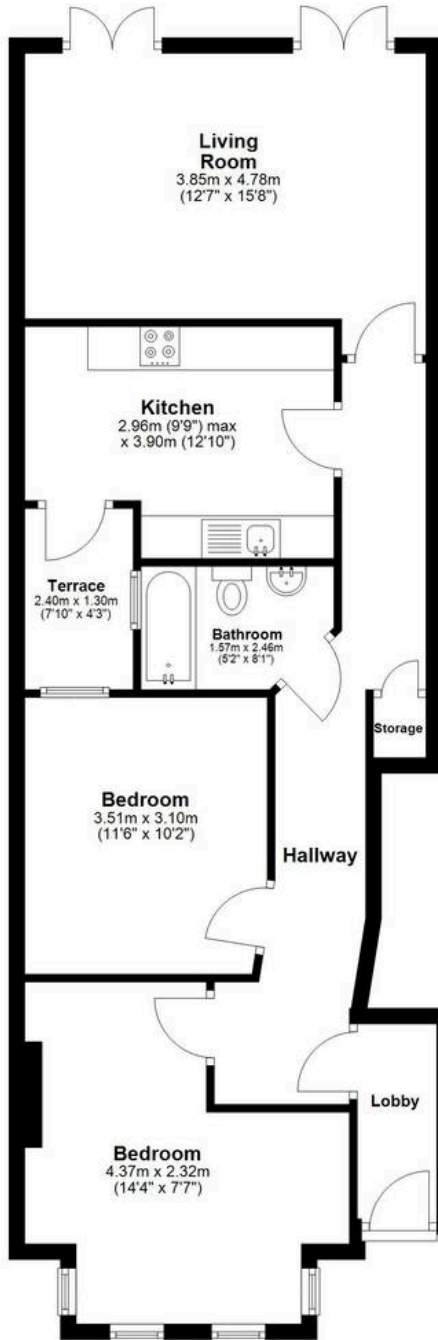
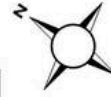



VDEN
DLEY



Ground Floor

Approx. 80.1 sq. metres (862.7 sq. feet)



Total area: approx. 80.1 sq. metres (862.7 sq. feet)



Bowden Bradley

Bansal House, Bracken Industrial Estate, 185 Forest Road - IG6 3HX

02080593593 · info@bowdenbradley.co.uk · bowdenbradley.co.uk/