

Vermont Drive, East Preston

Freehold

Substantial detached family home extending to approximately 2,444 sq ft. • Seven bedrooms, study and multiple bathroom facilities. • Versatile accommodation suitable for larger or multi-generational families. • Large rear garden with decked terrace and covered seating area. • Detached garage and useful outbuildings. • Central East Preston village location, offered for sale with no ongoing chain and requiring updating throughout.

Cooper Adams

Situated in the heart of East Preston village and offered for sale with no ongoing chain, this substantial detached family home provides spacious and versatile accommodation extending to approximately 2,444 sq ft. The property features a range of reception rooms, a kitchen, utility room, conservatory, seven bedrooms, a study and multiple bathroom facilities, making it ideal for larger families or multi-generational living. Outside, there is a large rear garden, detached garage and useful outbuildings. Requiring updating throughout, the property offers excellent potential for a purchaser to create a superb family home in this highly convenient village location.

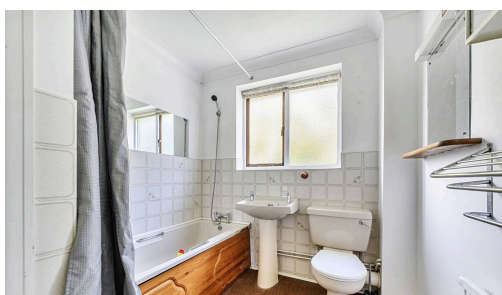
Council Tax band: E

Tenure: Freehold

EPC Energy Efficiency Rating: C



East Preston, a charming seaside village in West Sussex, offers a strong sense of community with shops, restaurants, schools, and leisure clubs nearby. Its peaceful pebble shoreline is perfect for relaxing walks. Ideally located near the South Downs, it combines the best of country and seaside living.



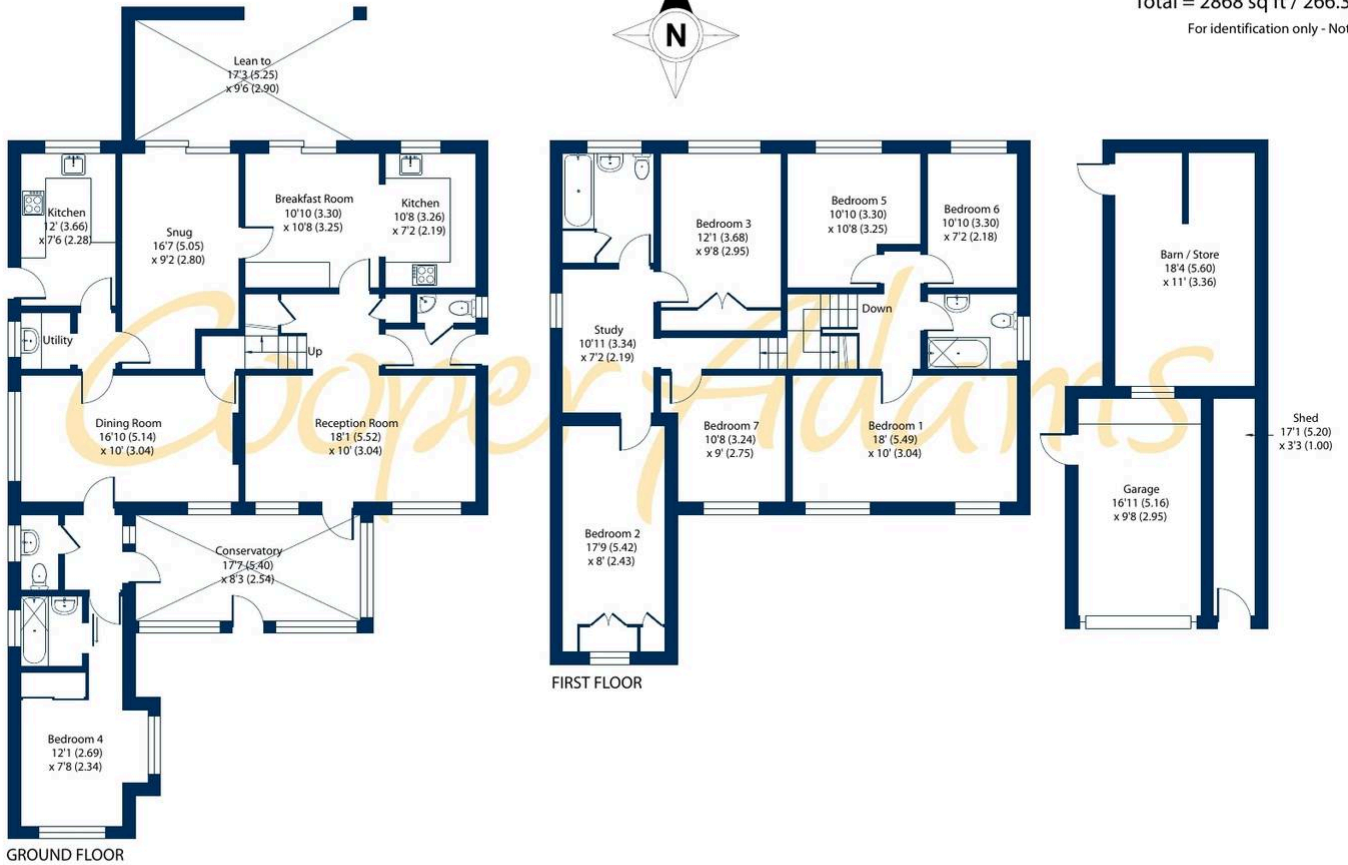
Approximate Area = 2444 sq ft / 227 sq m (excludes lean-to)

Garage = 165 sq ft / 15.3 sq m

Outbuildings = 259 sq ft / 24 sq m

Total = 2868 sq ft / 266.3 sq m

For identification only - Not to scale



Floor plan produced in accordance with RICS Property Measurement 2nd Edition, Incorporating International Property Measurement Standards (IPMS2 Residential). © nitchecom 2026. Produced for Cooper Adams Estates Limited. REF: 1478400



Material information includes important facts that may affect a buyer's decision to view or buy, such as tenure, restrictions, utilities, construction, and other key details. Full information for this property is available at www.cooper-adams.com. We may offer buyer services and receive referral benefits - details on request. All content is copyright Cooper Adams. Details and floor plans are for guidance only and don't form part of any contract. Measurements are maximums including bays and alcoves. Floor plan sizes are approximate. Images, maps and plans are not to scale. Appliances/services not tested. Cooper Adams Estates Ltd, Bishopstone, Reg No: 07127482. VAT No: 982847172.

Lettings | Sales | Free valuations | Land & New Homes | Mortgages

FULL DETAILS OF THE MATERIAL INFORMATION ARE ON OUR WEBSITE - VIEWING STRICTLY BY APPOINTMENT WITH COOPER ADAMS

FOR MORE PHOTOS AND TO BOOK A VIEWING VISIT OUR WEBSITE - Tel: 01903 791 792 - www.cooper-adams.com