



35 Chapman Road, Stevenage, SG1 4RJ



[iwstates.com](http://iwstates.com)

35 Chapman Road, Stevenage, SG1 4RJ

£1,300 Per Month

Spacious one-bedroom ground floor maisonette located in the highly sought-after Coreys Mill area of Stevenage, ideally positioned close to a range of local amenities.

The property has been recently refurbished throughout to a high standard and offers a brand-new kitchen and bathroom, a bright and generously sized lounge, and a double bedroom complete with built-in storage. A standout feature is the beautifully maintained private rear garden, perfect for outdoor relaxation.

Further benefits include an allocated parking space, providing convenient off-road parking. Ideally situated approximately 0.5 miles from Lister Hospital and with excellent access to local shops, transport links, and surrounding areas.

Early viewing is highly recommended to fully appreciate what this property has to offer.

Available start of May 2026.

Council Tax Band - B

EPC Rating - C

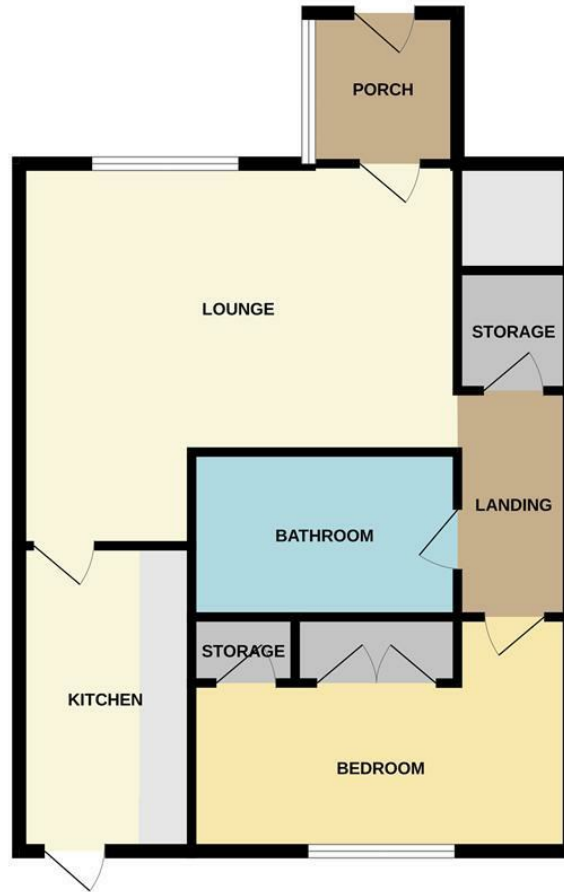
Holding Deposit - £300.00 (equivalent to one week's rent)

Deposit - £1,500.00

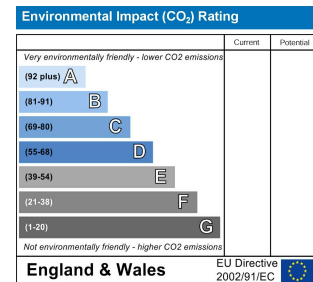
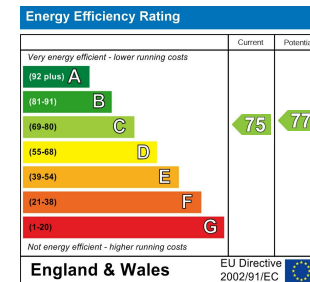
Stevenage Lettings 53 High Street, Stevenage, Hertfordshire SG1 3AQ | 01438 313 393

Stevenage@iwestates.com | www.iwestates.com

GROUND FLOOR



Whilst every attempt has been made to ensure the accuracy of the floorplan contained here, measurements of doors, windows, rooms and any other items are approximate and no responsibility is taken for any error, omission or mis-statement. This plan is for illustrative purposes only and should be used as such by any prospective purchaser. The services, systems and appliances shown have not been tested and no guarantee as to their operability or efficiency can be given.  
 Made with Metropix ©2025









Parking Space