

Clifford Street, Wigston

In Excess of £185,000

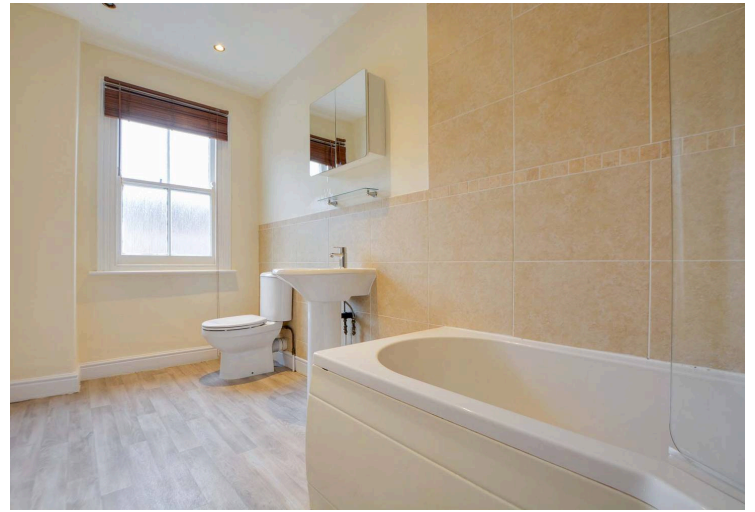
Attractive bay-fronted two-bed terrace in South Wigston. Three reception rooms, generous double bedrooms, no chain. Close to amenities, schools, transport. Ideal first home or investment.

Council Tax band: A

Tenure: Freehold

EPC Energy Efficiency Rating: D





Reception Room One

13' 7" x 11' 3" (4.14m x 3.42m)

This inviting primary living space is centered around a feature fireplace and a large bay window that floods the room with natural light. The room is finished with vibrant green walls and a matching chimney breast, complemented by classic coving to the ceiling, a traditional dado rail, wooden flooring, and a radiator

Reception Room Two

12' 1" x 11' 3" (3.68m x 3.44m)

A cosy second reception room featuring soft grey carpeting and a chimney breast with integrated shelving. This practical space includes a dado rail, a radiator, and convenient storage provided by an under stairs cupboard.

Kitchen

12' 8" x 6' 0" (3.85m x 1.83m)

A well-appointed kitchen comprising a range of base and wall units with stylish wood-effect laminate work surfaces. Key features include a sink with mixer tap, an inset five-ring gas hob with an oven and extraction hood above, a dedicated boiler cupboard, and plumbing for a washing machine.



Reception Room Three

12' 10" x 6' 3" (3.91m x 1.91m)

Located on the ground floor, this versatile room features wood-effect flooring and a striking green accent wall. A double-glazed door provides direct access to the rear garden, making this an ideal space for a home office.

First Floor Landing

Bedroom One

12' 11" x 12' 0" (3.93m x 3.66m)

A spacious principal bedroom decorated with a feature chimney breast and two stylish grey alcoves. The room is finished with comfortable grey carpeting, coving to the ceiling, and a radiator.

Bedroom Two

12' 1" x 9' 11" (3.69m x 3.03m)

This second double bedroom offers wood-effect flooring and a central chimney breast. It includes a practical built-in over-stairs storage cupboard, a radiator, and a classic single-glazed sash window overlooking the rear.

Bathroom

12' 8" x 5' 11" (3.87m x 1.81m)

A generous family bathroom featuring an obscured glazed sash window for privacy. The suite includes a bath with a shower and screen, a low-level WC, a wash hand basin with tiled splashbacks, a built-in wall-mounted unit, and a radiator.

Front Garden

Entered via a wrought iron gate with a frontage and pathway to the door.

Rear Garden

Slabbed patio seating area leading to a raised patio area with well-maintained fence perimeter borders.



FLOOR PLAN CREATED BY CUBICASA APP. MEASUREMENTS DEEMED HIGHLY RELIABLE BUT NOT GUARANTEED.



FLOOR PLAN CREATED BY CUBICASA APP. MEASUREMENTS DEEMED HIGHLY RELIABLE BUT NOT GUARANTEED.

We'll keep you moving...



We must inform all prospective purchasers that the measurements are taken by an electronic take and are provided as a guide only and they should not be used as accurate measurements. We have not tested any mains services, gas or electric appliances, or fixtures and fittings mentioned in these details, therefore, prospective purchasers should satisfy themselves before committing to purchase. Intending purchasers must satisfy themselves by inspection or otherwise to the correctness of the statements contained in these particulars. Knightsbridge Estate Agents (nor any person in their employment) has any authority to make any representation or warranty in relation to the property. The floor plans are not to scale, and are intended for use as a guide to the layout of the property only. They should not be used for any other purpose. We are required by law to conduct anti-money laundering checks on all those selling or buying a property. Whilst we retain responsibility for ensuring checks and any ongoing monitoring are carried out correctly, the initial checks are carried out on our behalf by Lifetime Legal who will contact you once you have agreed to instruct us in your sale or had an offer accepted on a property you wish to buy. The cost of these checks is £60 (incl. VAT), which covers the cost of obtaining relevant data and any manual checks and monitoring which might be required. This fee will need to be paid by you in advance of us publishing your property (in the case of a vendor) or issuing a memorandum of sale (in the case of a buyer), directly to Lifetime Legal, and is non-refundable. We will receive some of the fee taken by Lifetime Legal to compensate for its role in the provision of these checks.