



24a Heathcote Road

Melksham, SN12 7DF

Guide Price £250,000

Blueleaf Property are delighted to offer this three bedroom semi detached family home in the Forest area of Melksham.

The ground floor accommodation comprises entrance hall with under stairs cupboard, cloakroom, lounge and kitchen dining room with patio doors onto the rear garden. On the first floor there is a landing, two double bedrooms with fitted wardrobes, a single bedroom and a family bathroom.

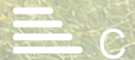
The property further benefits from driveway parking for two cars, upvc double glazing, gas central heating (combination boiler) and an enclosed rear garden with gated side access, patio and shed.

All room measurements are approx;
Lounge: 3.63m x 2.91m
Kitchen Dining Room: 5.44m x 2.59m
Bedroom One: 3.16m x 3.04m ext 3.63m
Bedroom Two: 2.71m x 2.39m ext 3.16m
Bedroom Three: 2.62m x 2.16m

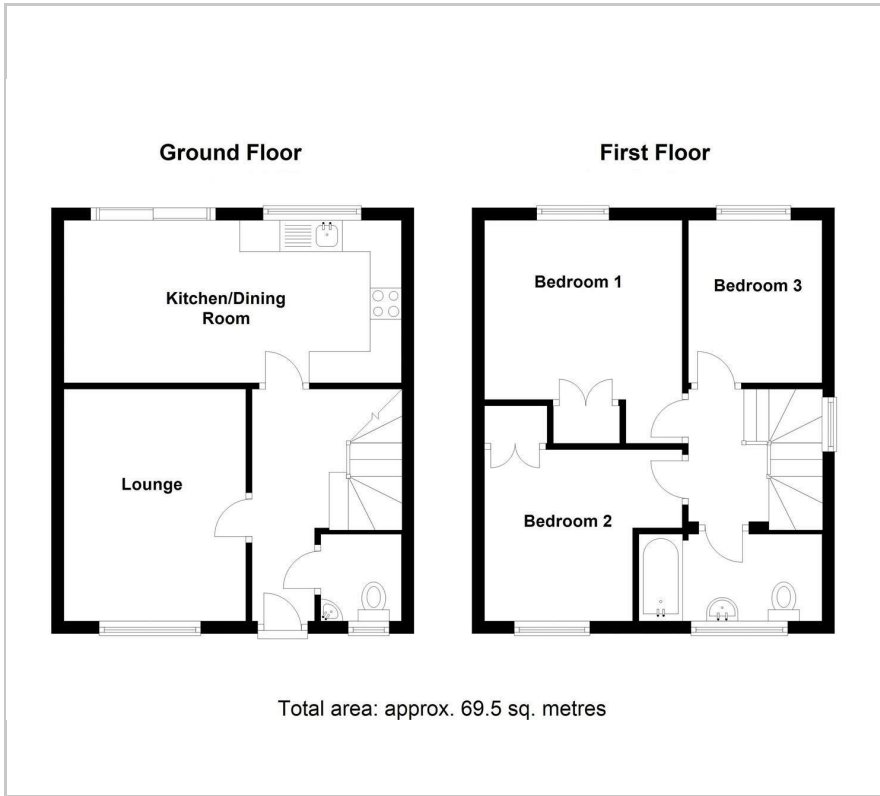
Viewing

Please contact our Blueleaf Property Office on 01225 839050 if you wish to arrange a viewing appointment for this property or require further information.

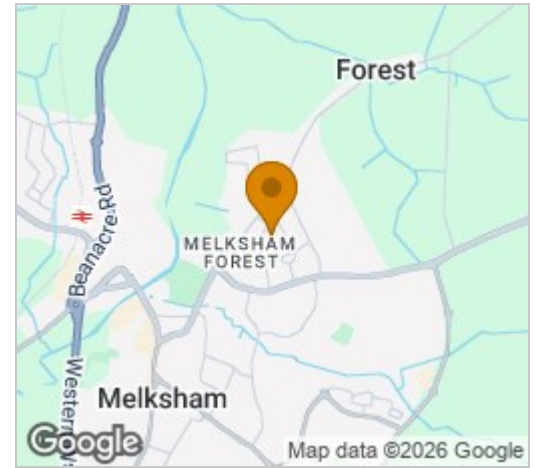
- Chain Free
- Three bedroom semi detached home
- Driveway parking for two vehicles
- Enclosed rear garden with patio and side access
- EPC - C
- Council Tax - B (Wiltshire Council)



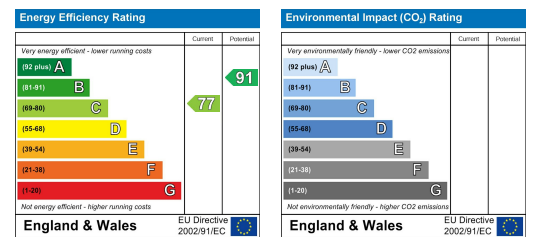
Floor Plan



Area Map



Energy Efficiency Graph



These particulars, whilst believed to be accurate are set out as a general outline only for guidance and do not constitute any part of an offer or contract. Intending purchasers should not rely on them as statements of representation of fact, but must satisfy themselves by inspection or otherwise as to their accuracy. No person in this firm's employment has the authority to make or give any representation or warranty in respect of the property.

Office 4 Stockley Farm, Stockley, Wiltshire, SN11 0NT

Tel: 01225 839050 Email: hello@blueleafproperty.co.uk <https://www.blueleafproperty.co.uk>