



# 1 Longdrive, Stretton Road, Clay Cross, Chesterfield, S45 9AQ

£625,000

- Executive detached 4/5 bedroom home
- 5th Bedroom or office room downstairs, could be utilised for blended living with 2 receptions and a large wc that could be converted into a shower room
- Ev Charging point and driveway for multiple vehicles, plus garage
- Fabulous kitchen diner area with separate utility room, storage and Wc
- Exclusive development with gated entry
- 2 En-suited bedrooms and a large family bathroom
- 2nd Sitting room, ideal for a playroom with doors into the garden
- Beautifully presented property throughout with downstairs underfloor heating and zonal controls
- Fabulous countryside views
- Large lounge with cast Iron Multifuel burner and French doors into the garden



### 1 Long Drive

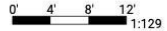
CREATED ON  
2026-02-24

LOCATION  
1 Long Drive, Stretton Road  
S45 9AQ Chesterfield  
Derbyshire  
GB

DETAILS  
Total area: 2622.70 sq ft  
Living area: 2327.02 sq ft  
Floors: 2  
Rooms: 21

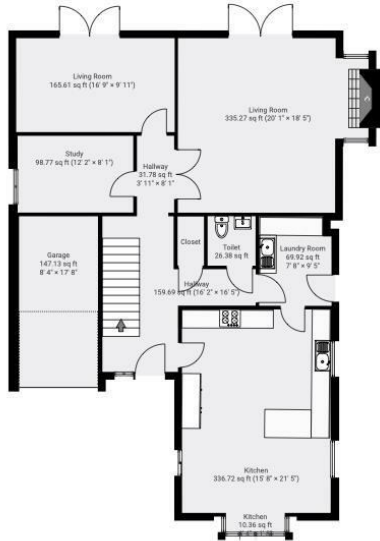
Square Box Media  
info@squareboxmedia.com  
www.squareboxmedia.com

THIS FLOORPLAN IS PROVIDED WITHOUT WARRANTY OF ANY KIND. SQUAREBOX MEDIA DISCLAIMS ANY WARRANTY INCLUDING, WITHOUT LIMITATION, SATISFACTORY QUALITY OR ACCURACY OF DIMENSIONS.



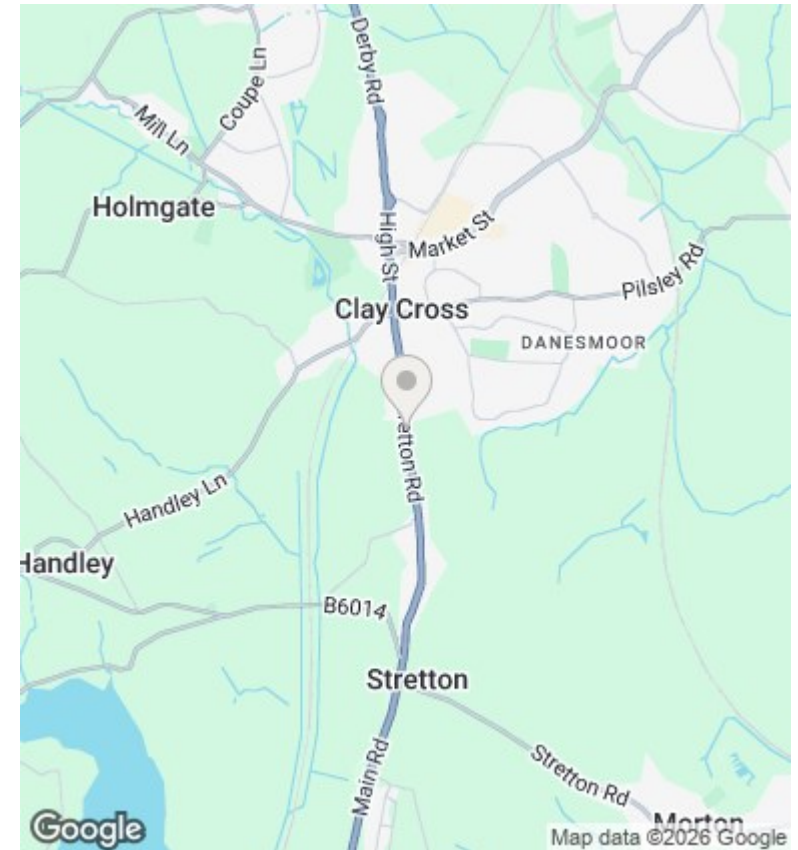
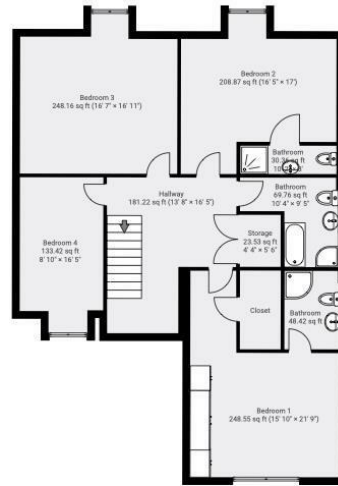
#### ▼ Ground Floor

TOTAL AREA: 1395.31 sq ft - LIVING AREA: 1248.18 sq ft - ROOMS: 11



#### ▼ 1st Floor

TOTAL AREA: 1227.39 sq ft - LIVING AREA: 1078.85 sq ft - ROOMS: 10



## Directions

## Viewings

Viewings by arrangement only. Call 01246 276 276 to make an appointment.

## Council Tax Band

A

EPC Rating:

C

### Energy Efficiency Rating

	Current	Potential
Very energy efficient - lower running costs		
(92 plus) <b>A</b>		<b>94</b>
(81-91) <b>B</b>		
(69-80) <b>C</b>	<b>79</b>	
(55-68) <b>D</b>		
(39-54) <b>E</b>		
(21-38) <b>F</b>		
(1-20) <b>G</b>		
Not energy efficient - higher running costs		
<b>England &amp; Wales</b>	EU Directive 2002/91/EC	