

Road Map



Hybrid Map



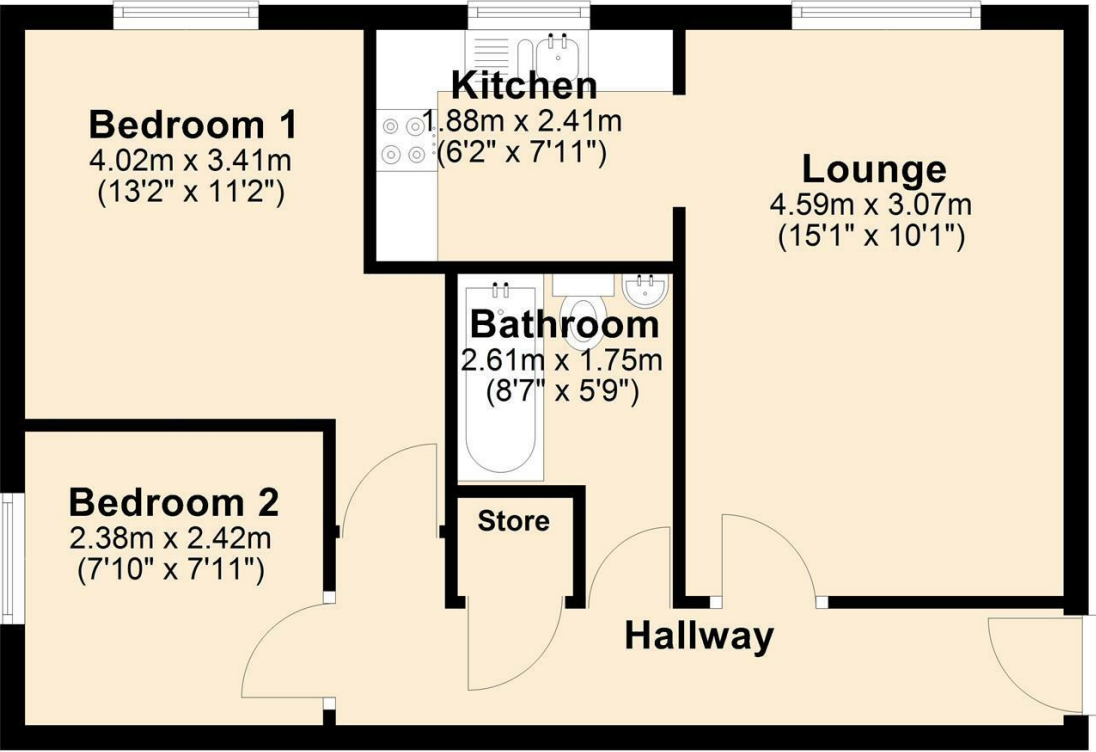
Terrain Map



Floor Plan

Ground Floor

Approx. 47.5 sq. metres (511.5 sq. feet)

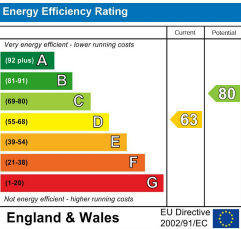


Viewings

Please contact our iMove Sales & Lettings Office on 01253 883311 if you wish to arrange a viewing appointment for this property or require further information.

These particulars, whilst believed to be accurate are set out as a general outline only for guidance and do not constitute any part of an offer or contract. Intending purchasers should not rely on them as statements of representation of fact, but must satisfy themselves by inspection or otherwise as to their accuracy. No person in this firms employment has the authority to make or give any representation or warranty in respect of the property.

Energy Efficiency Graph



11 Bayside

Fleetwood, FY7 6FZ

Offers In The Region Of £73,000



11 Bayside

Fleetwood, FY7 6FZ

Offers In The Region Of £73,000



Hallway

door providing access to flat from first floor, hallway with doors leading to rooms, carpet and ceiling light

Lounge

15'0" x 10'0"

UPVC double glazed window to front. Open arch access to kitchen. Carpet, electric heater and ceiling lights.

Kitchen

6'2" x 7'10"

UPVC double glazed window to front. Range of wall and base units with worktop above. Stainless steel sink unit with mixer tap above. Electric hob with electric oven beneath and extractor fan above. Plumbed for washing machine. Under counter space for washing machine. vinyl flooring and ceiling light.

Bathroom

8'6" x 5'8"

Three piece bathroom suite comprising; panel bath with electric shower above, low flush WC and pedestal wash hand basin. vinyl flooring, ceiling light and electric wall heater.

Bedroom 1

13'2" x 11'2"

UPVC double glazed window to front. Carpet, ceiling light and electric heater.

Bedroom 2

7'9" x 7'11"

UPVC double glazed window to side. Carpet, ceiling light and electric heater.

Further Information

Tenure - Leasehold

Lease Term - 999 yrs from feb 6th 1998

£100 ground rent and maintenance per month

Agent's Disclaimer

These particulars, whilst believed to be accurate are set out as a general guideline and do not constitute any part of an offer or contract. Intending Purchasers should not rely on them as statements of representation of fact, but must satisfy themselves by inspection or otherwise as to their accuracy. Please note that we have not tested any apparatus, equipment, fixtures, fittings or services including gas central heating and so cannot verify they are in working order or fit for their purpose. Furthermore, Solicitors should confirm moveable items described in the sales particulars and, in fact, included in the sale since circumstances do change during the marketing or negotiations. Although we try to ensure accuracy, if measurements are used in this listing, they may be approximate. Therefore if intending Purchasers need accurate measurements to order carpeting or to ensure existing furniture will fit, they should take such measurements themselves. Photographs are reproduced general information and it must not be inferred that any item is included for sale with the property.

