



Cosway Street

London, NW1

£6,600 per month
(£1,523.08 per week)

A three bedroom apartment on the second floor of this portered, newly built apartment block within close proximity to Marylebone Station. Underground Parking for an additional monthly fee.

CHESTERTONS



Cosway Street

London, NW1

- 3 Bedrooms, 2 Bathrooms
- Newly Built Apartment
- Allocated Parking Space
- Balcony
- Communal Gardens



A stunning three bedroom apartment on the second floor of this portered, newly built apartment block within close proximity to Marylebone Station.

The apartment comes with allocated parking space, balcony and communal gardens. Ideal location for Marylebone, Baker Street and Edgware road stations.

Minimum Term: 12 months
Deposit Required: £7,615.38
Local Authority: Westminster
Council Tax Band: G
EPC Rating: B
Furnished, Part Furnished, Unfurnished

Energy Efficiency Rating		Current	Potential
Very energy efficient - lower running costs			
(92-100)	A		
(81-91)	B	85	85
(69-80)	C		
(55-68)	D		
(39-54)	E		
(21-38)	F		
(1-20)	G		
Not energy efficient - higher running costs			
England, Scotland & Wales		EU Directive 2002/91/EC	

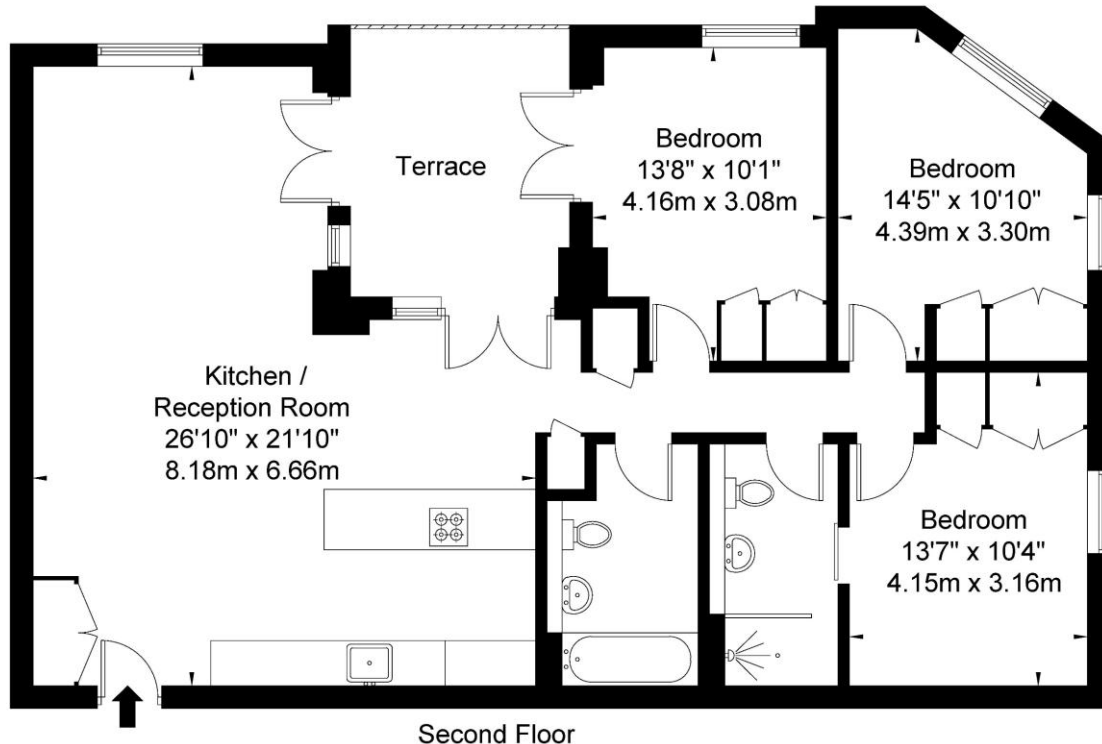
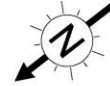
Chestertons St John's Wood Lettings

105 St. John's Wood Terrace
 London
 NW8 6PL
 stjohslettingsusers@chestertons.co.uk
 02030408622
 chestertons.co.uk

Additional tenant charges apply (fees apply to non-AST tenancies only)
 Tenancy Agreement Fee: £300
 References per Tenant/Guarantor: £60
 Inventory check (approx. £100 – £250 inc. VAT)
 chestertons.co.uk/property-to-rent/applicable-fees

Cosway Street, NW1 6TH

Approx Gross Internal Area = 103.2 sq m / 1110 sq ft



Ref

Copyright **BLEU
PLAN**

The Floor plan is not to scale and measurements and areas shown are approximate and therefore should be used for illustrative purposes only. The plan has been prepared in accordance with the RICS code of Measuring Practice and whilst we have confidence in the information produced it must not be relied on. If there is any aspect of particular importance, you should carry out or commission your own inspection of the property.

Copyright @ BLEUPLAN

