



Railshead Road, TW7

£2,595 Per calendar month

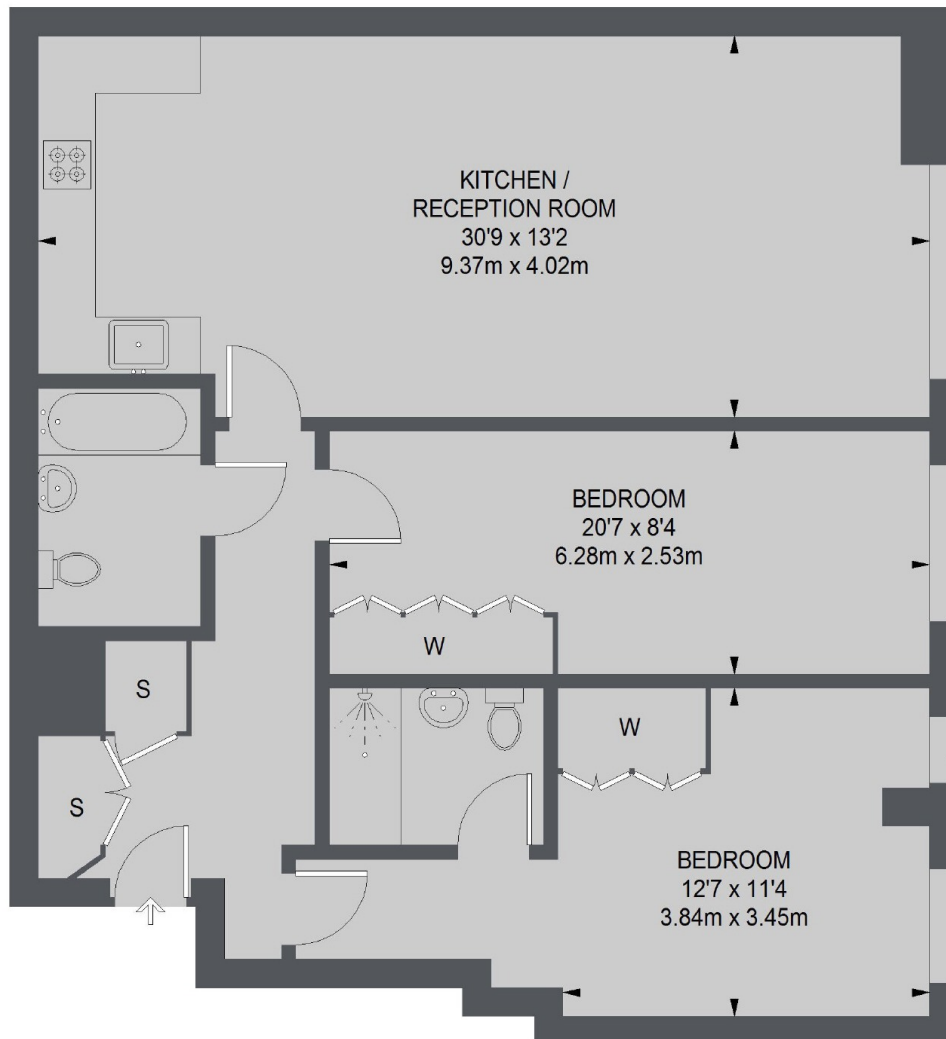
This two double double bedroom modern build apartment, is on the boundary of St Margarets and within the Richmond Borough. With floor to ceiling windows throughout and simply incredible views of the river and Isleworth Ait.

Within the Borough of Richmond, and can be reached along the rivers tow path, also within a mile is the A316 for routes to central London and St Margarets railway station and village high street.

Features

- Open-Plan Living Room
- Juliet Balcony
- Two Double Bedrooms
- Two Bathrooms
- Access To Bike Storage
- Underground Parking

Railshead Road, Isleworth, TW7



TOTAL APPROX. FLOOR AREA
988 SQ. FT. (91.74 SQ. M.)

Dexters

St Margarets
1 Chertsey Road
St Margarets
TW1 1LR
Lettings
020 8744 9700

Energy Rating: B. We aim to make our particulars both accurate and reliable. However they are not guaranteed; nor do they form part of an offer or contract. If you require clarification on any points then please contact us, especially if you're traveling some distance to view. Please note that appliances and heating systems have not been tested and therefore no warranties can be given as to their good working order.

 **RICS** | Regulated
Estate Agent
and Letting Agent

[dexters.co.uk](https://www.dexters.co.uk)