

Property ref: 172738

## Hewitt, Reading, RG1 7LY

£1,600 PCM

**HASLAM'S**  
Lettings



A two bedroom, fifteenth floor apartment in this impressive town centre development, located within close proximity of Reading mainline station and the Oracle shopping centre.

Reading Borough Council tax band D.

Water supply: Mains

Drainage info: Mains

Electricity supply: Mains

Broadband/Mobile Info: Connections available. For an indication of specific speeds and supply of Broadband and Mobile, we advise applicants go to the Ofcom website Broadband and Mobile Coverage Checker.

**Available 08/05/2026**

- Two double bedrooms; Master with en-suite plus further family bathroom
- Open plan living room/kitchen with wood flooring
- Fully fitted kitchen with integrated appliances
- Sundry payment of £80 per month on top of the rent to cover hot water and heating via communal boiler
- EPC rating D; Allocated parking
- Furnished; Managed by HASLAM'S

\*Fees For Assured Shorthold Tenancies: when you rent a property from us you will be required to pay a sum equivalent to one weeks' rent for a holding deposit. Upon successful application, this amount will be off set against your first months' rent. You will also be required to pay a security deposit equivalent to 5 weeks' rent which will be held and protected in line with Deposit legislation. For more information about our fees please visit: [www.haslams.net](http://www.haslams.net)  
Fees for all other tenancies (Non Housing Act Tenancies / Company Lets): when you rent a property from us we will charge you a one-off fee per property. This charge is the equivalent of 15 days of the monthly rental charge (+VAT) with a minimum fee of £450 (inc.VAT) up to a maximum of £650 (inc.VAT). Other fees may apply depending on your circumstances.

**0118 960 1055**

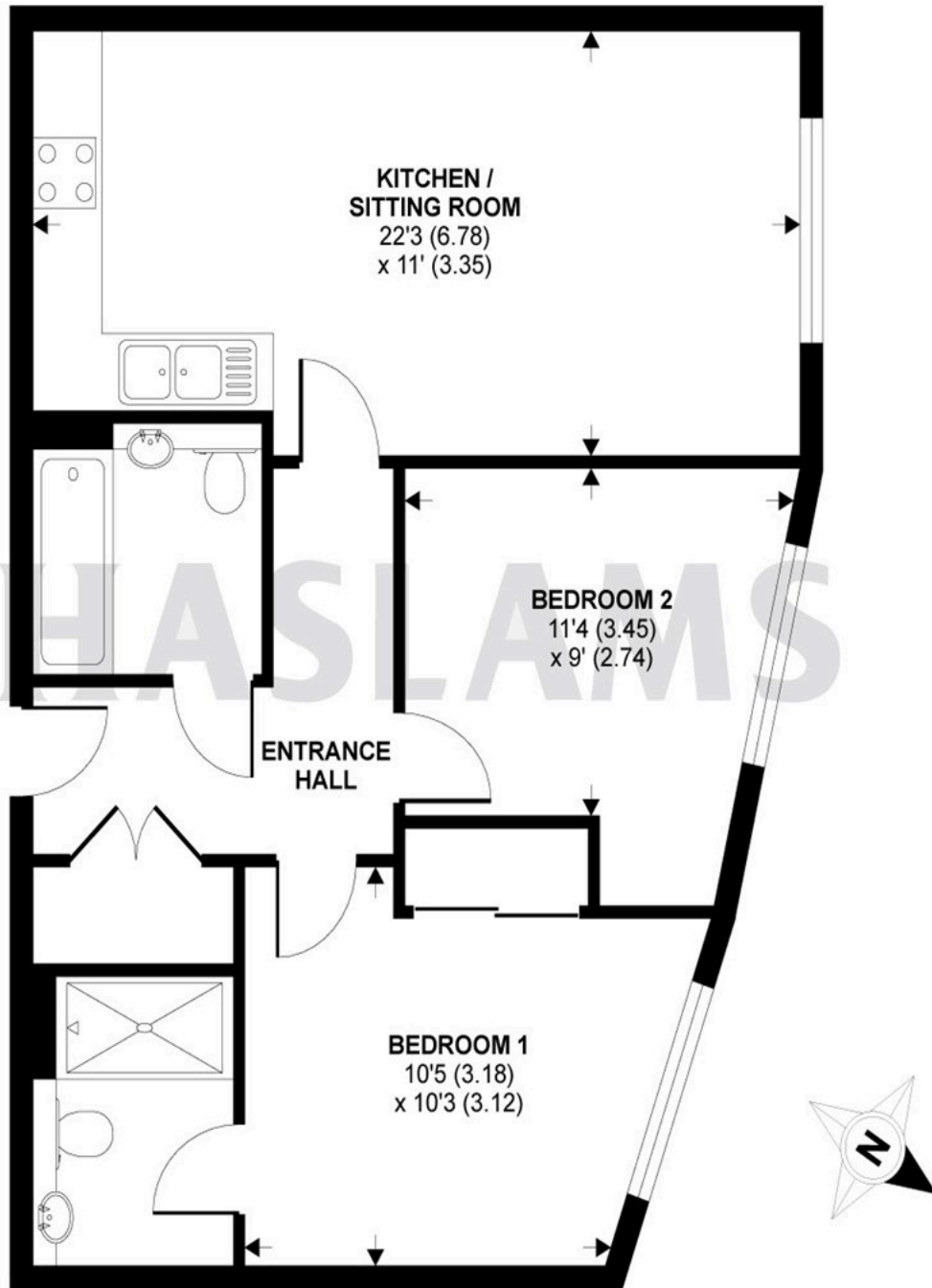
**[lettings@haslams.net](mailto:lettings@haslams.net) [www.haslams.net](http://www.haslams.net)**

**Haslams Estate Agents Ltd, 159 Friar Street, Reading, Berkshire, RG1 1HE**



# Alfred Street, Reading, RG1

APPROX. GROSS INTERNAL FLOOR AREA 662 SQ FT 61.5 SQ METRES



Whilst every attempt has been made to ensure the accuracy of the floor plan contained here, measurements of doors, windows and rooms are approximate and no responsibility is taken for any error, omission or misstatement. These plans are for representation purposes only as defined by RICS Code of Measuring Practice and should be used as such by any prospective purchaser. Specifically no guarantee is given on the total square footage of the property if quoted on this plan. Any figure given is for initial guidance only and should not be relied on as a basis of valuation.

Copyright nichecom.co.uk 2015 Produced for Haslam's REF : 72514