



WOODLAND WAY, N21 3QB

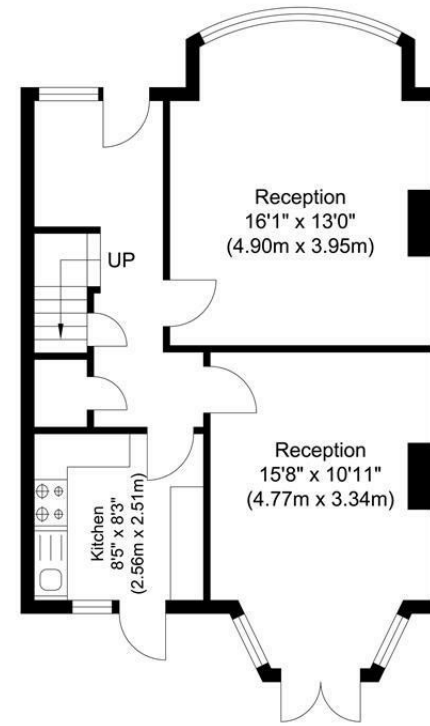


£799,999 Freehold

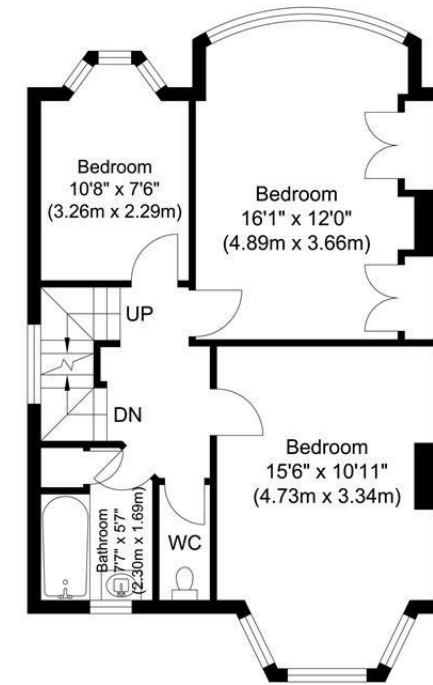
- SEMI-DETACHED
- KITCHEN
- BATHROOM
- OFF STREET PARKING
- TWO RECEPTIONS
- FOUR BEDROOMS
- LARGE GARDEN

Property Details

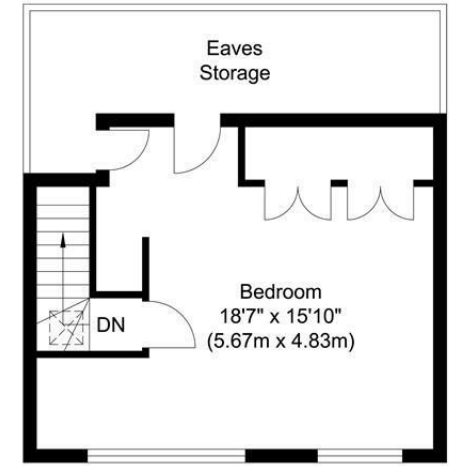
Semi-detached property in need of modernisation but with plenty of scope to improve and enlarge. 2 Receptions, kitchen, 4 bedrooms and family bathroom. There is a large rear garden with patio area with remainder laid to lawn with mature flower borders. and off street parking.



Ground Floor
Approximate Floor Area
544.00 sq. ft.
(50.54 sq. m)



First Floor
Approximate Floor Area
549.92 sq. ft.
(51.09 sq. m)



Second Floor
Approximate Floor Area
303.21 sq. ft.
(28.17 sq. m)

Total Floor Area
Approximate Floor Area
1397.15 sq. ft.
(129.80 sq. m)

Energy Efficiency Rating		Current	Potential
Very energy efficient - lower running costs			
(92 plus)	A		
(81-91)	B		81
(69-80)	C		
(55-68)	D		
(39-54)	E	47	
(21-38)	F		
(1-20)	G		
Not energy efficient - higher running costs			
England & Wales		EU Directive 2002/91/EC	

