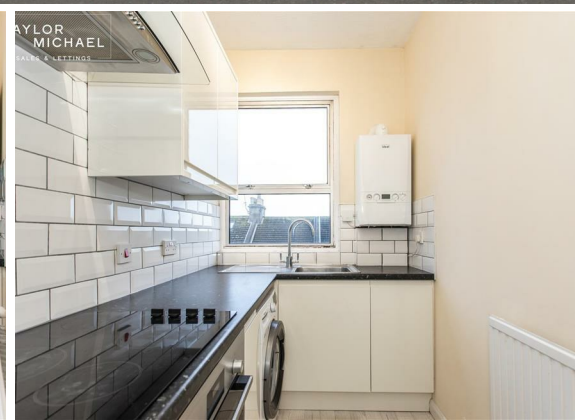




1 Bed
Flat
located in

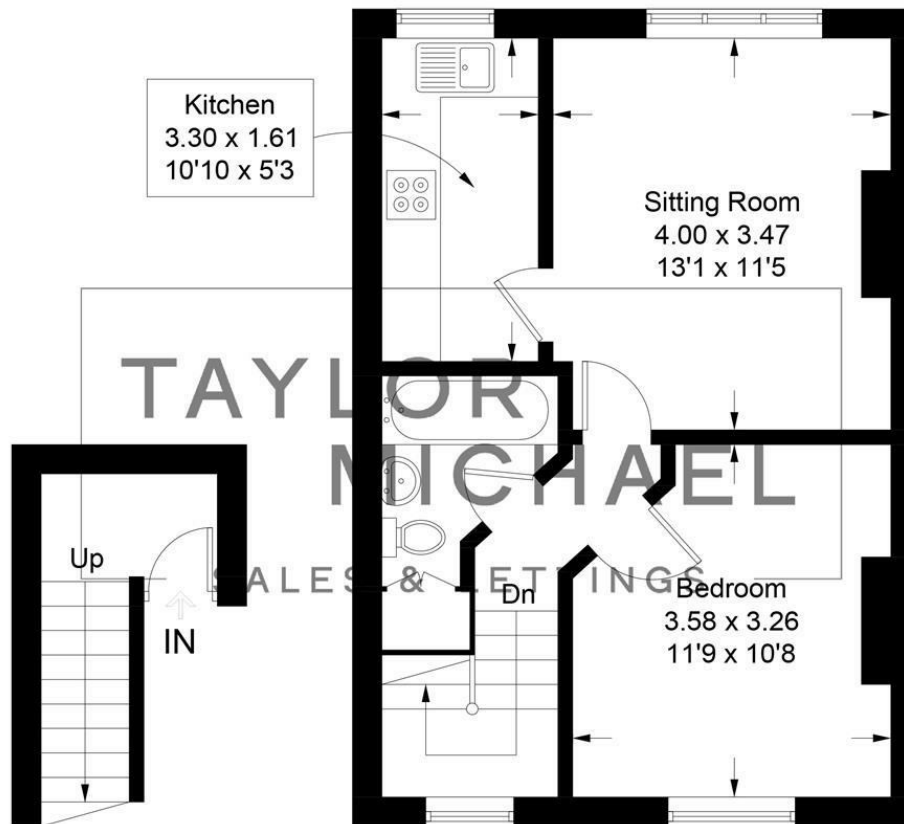
£1,095 Per month



TAYLOR
MICHAEL

Queens Park Road, Brighton, BN2 0GJ

Approximate Gross Internal Area = 44.5 sq m / 479 sq ft



First Floor

Second Floor

Illustration for identification purposes only, measurements are approximate, not to scale.
Imageplansurveys @ 2026

DIRECTIONS

CONTACT

62 Church Road
Hove
East Sussex
BN3 2FP

E: lettings@taylormichael.agency
T: 01273 600100
<https://taylormichael.agency/>

| Energy Efficiency Rating | | |
|---|---------|-----------|
| | Current | Potential |
| Very energy efficient - lower running costs | | |
| (92 plus) A | | |
| (81-91) B | | |
| (69-80) C | 73 | 78 |
| (55-68) D | | |
| (39-54) E | | |
| (21-38) F | | |
| (1-20) G | | |
| Not energy efficient - higher running costs | | |
| England & Wales | | |
| EU Directive 2002/91/EC | | |

TAYLOR
MICHAEL