



3 Dubbs Cross, Virginstow

Beaworthy

Guide Price **£325,000**



3 Dubbs Cross

Virginstow, Beaworthy

- Extended and Spacious Semi-Detached Bungalow
- Rural Location
- Four Double Bedrooms
- Versatile Accommodation
- Open Plan Kitchen, Living Space
- West Facing Garden and Part Countryside Views
- Garage and Driveway
- PV Solar Panels and Battery Storage
- Very Well Presented
- Viewing Advised

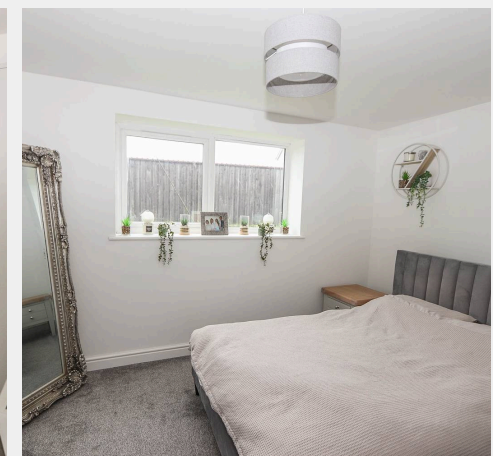
SITUATION AND DESCRIPTION

The property is situated in the parish of Virginstow, outside of the village itself and set in the beautiful North West Devon countryside on the Cornwall/Devon border.

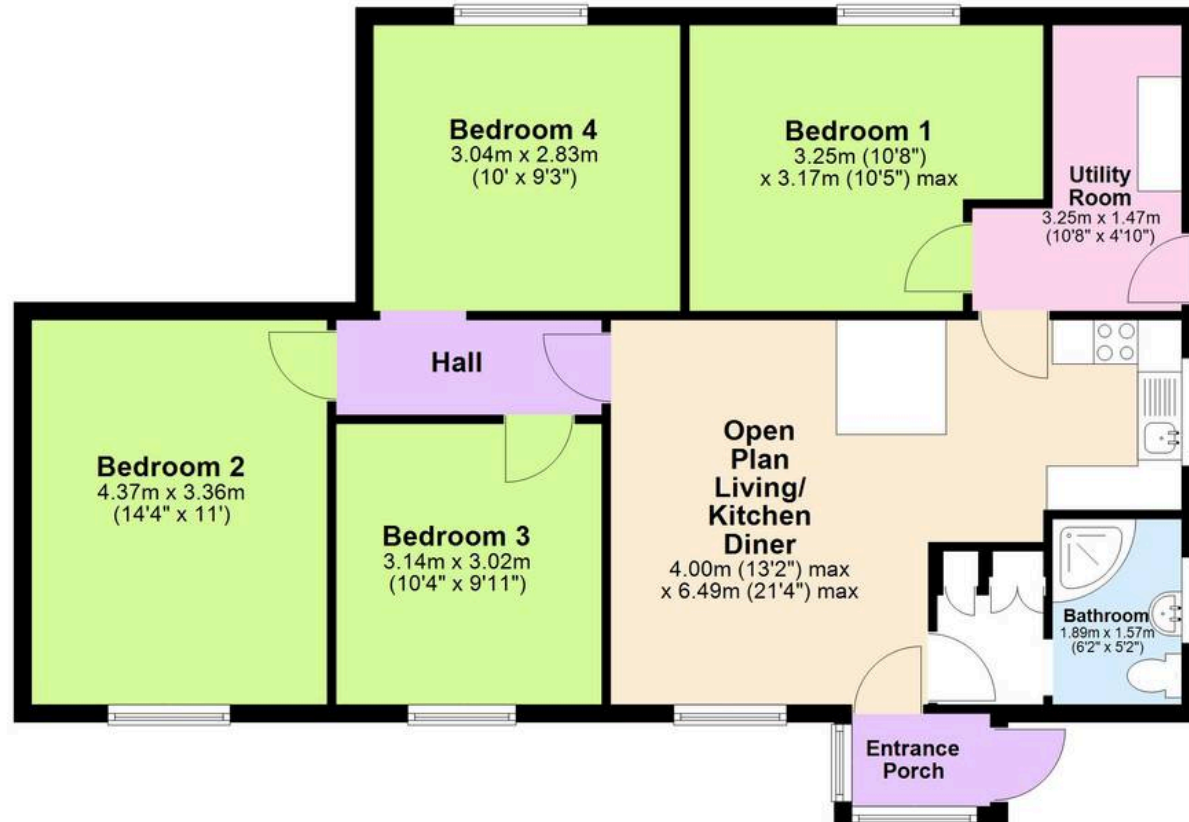
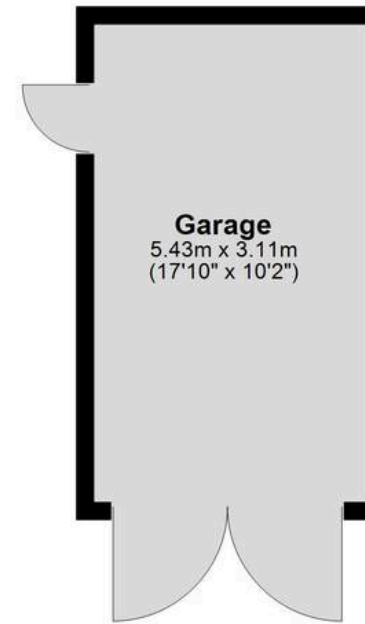
The village of Virginstow is very small and boasts the Church of St. Bridget The Virgin which is sited on a ridge with commanding views over Cornwall. Only the font now remains of the 12th Century Church which was entirely rebuilt in 1851.

Virginstow is 5 miles north of Lifton, 6.5 miles north, north-east of Launceston. Also the towns of Okehampton and Tavistock are both approximately 15 miles from the property. Primary schools are well catered for in neighbouring villages. The nearest village is Ashwater which has a community run general store and a very popular public house. The property is conveniently located, a 10 minute drive from the A30 dual carriageway.

A spacious and well-presented semi-detached bungalow, which has been substantially extended and improved by the seller in recent years. The



Ground Floor



This floorplan is set out as a guideline only and should not be relied upon as a representation of fact. It is intended for information purposes only and is not to scale. Copyright Mansbridge Balment 2025. Plan produced using PlanUp.



Mansbridge Balment

Mansbridge Balment, Office 43, A30Bc, Higher Stockley Mead - EX20
1BG

01837 52371

okehampton@mansbridgebalment.co.uk

www.mansbridgebalment.co.uk/

