



## St. Luke's Avenue, SW4

£2,000 Per calendar month

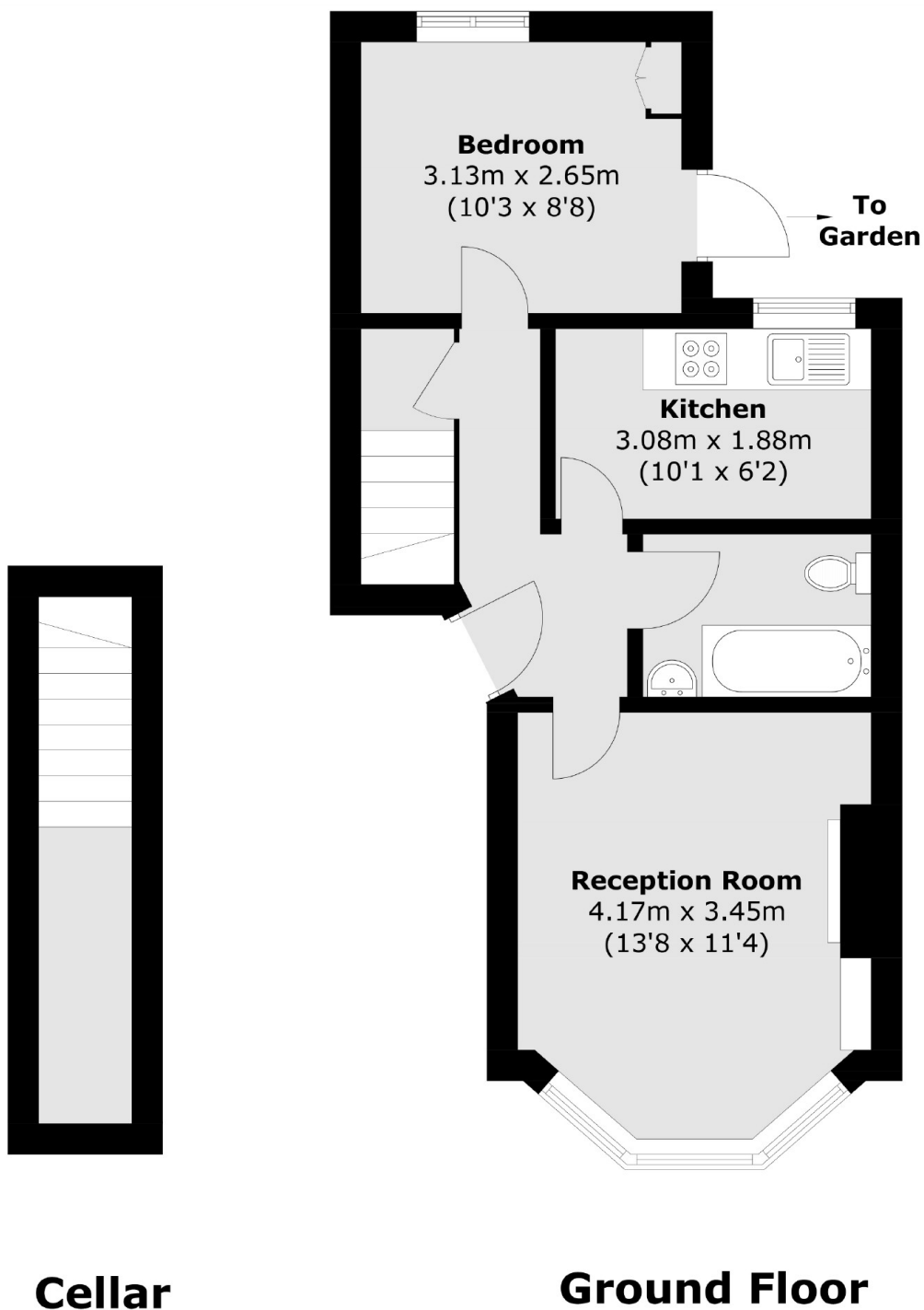
This ground floor one bedroom property in the heart of Clapham offers a reception room, separate kitchen, modern bathroom and a double bedroom which leads out to a private rear garden.

In a fantastic location, just off Clapham High Street with all its shops, cafés, bars and restaurants. With Clapham North tube station less than half a mile away.

### Features

- One Double Bedroom
- Ground Floor Flat
- Spacious Reception Room
- Separate Kitchen
- Private Garden
- Prime Location

# St. Luke's Avenue, London, SW4



Total area (approx.): 44.0 sq. m (473.6 sq. ft)  
(Including Cellar)

## Dexters

Clapham High Street  
55 Clapham High Street  
London  
SW4 7TG  
Lettings  
020 7483 6364

Energy Rating: D. We aim to make our particulars both accurate and reliable. However they are not guaranteed; nor do they form part of an offer or contract. If you require clarification on any points then please contact us, especially if you're traveling some distance to view. Please note that appliances and heating systems have not been tested and therefore no warranties can be given as to their good working order.

 **RICS** | Regulated  
Estate Agent  
and Letting Agent

dexters.co.uk