



## The Chase, SW4

£2,250 Per calendar month

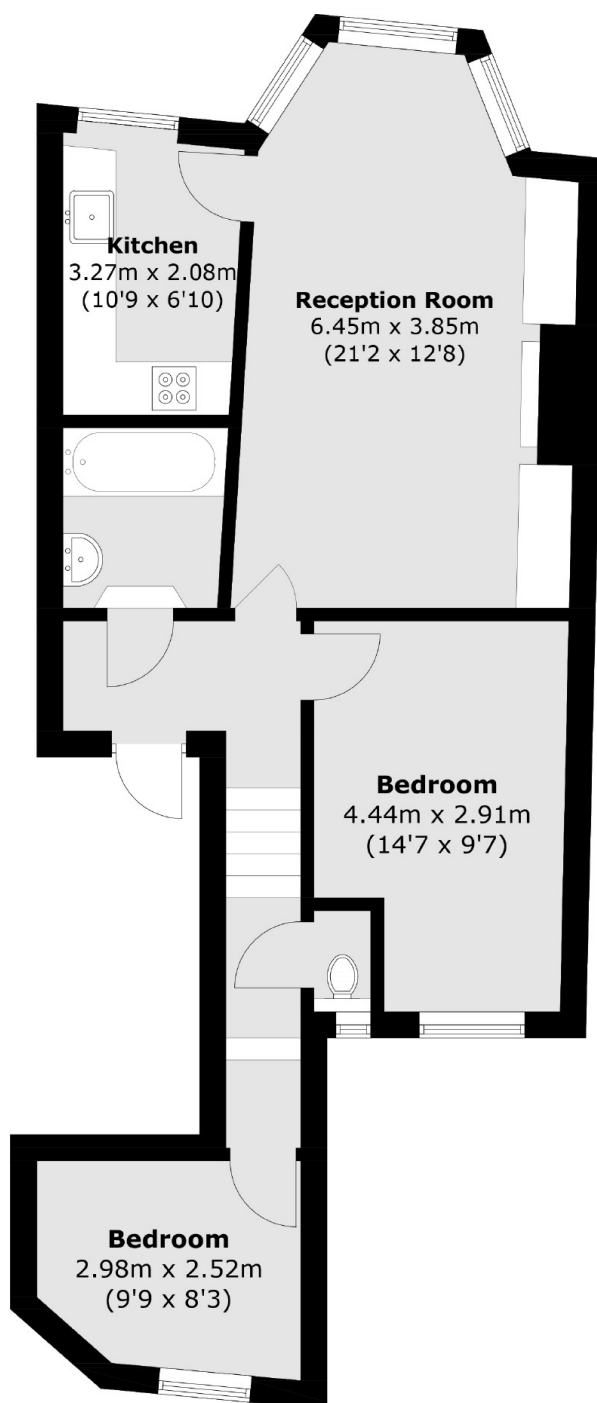
This first floor flat in the heart of the Old Town is a rare find, with wooden flooring, large double bedroom, further study/guest bedroom and a modern kitchen. Perfect for professional couples.

Located in Clapham Old Town, with easy access to the open spaces of the Common as well as the surrounding cafés, bars and restaurants.

### Features

- One Double Bedrooms
- First Floor Flat
- Separate Reception Room
- Office/Study Room
- Wooden Flooring
- Prime Location

# The Chase, London, SW4



Total area (approx.): 61.6 sq. m (663.0 sq. ft)