



Conway Street, W1T

£750 Per week

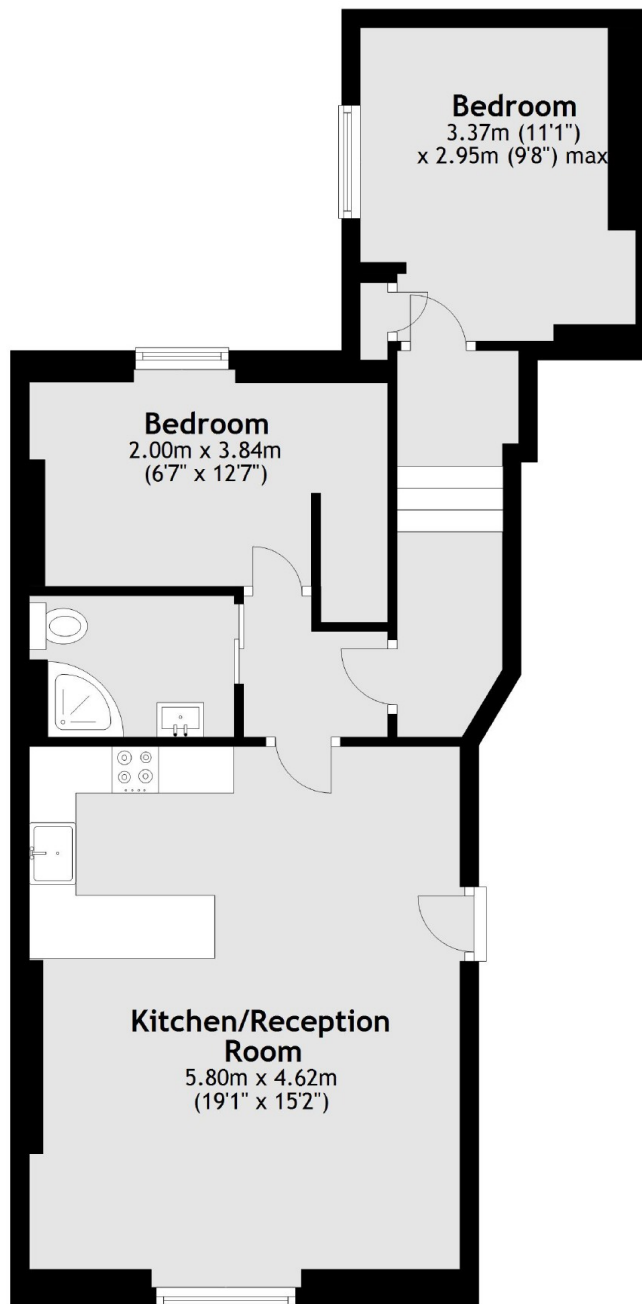
Well located just off Fitzroy Square is this two double bedroom apartment positioned on the ground floor of a well maintained Georgian Town House.

Conway Street is just off the famous Fitzroy Square and is just a few yards of Tottenham Court Road with its wide array of shops, bars and restaurants.

Features

- Two Bedrooms
- Period Conversion
- Open Plan Kitchen
- Great Storage
- Newly Refurbished
- 20 yards from Fitzroy Square

Conway Street, London, W1T



Ground Floor

Total area: approx. 57.2 sq. metres (615.9 sq. feet)