



# Cliveden House

26-29, SW1W

£4,116.67 per month  
(£950 per week)

Very well finished apartment with lift access, moments from Sloane Square. The property has been beautifully finished throughout and benefits from a caretaker and access to a beautiful shared garden.



# Cliveden House

26-29, SW1W

- Bright well finished apartment moments from Sloane Square
- Reception, 2 bedrooms, 2 bathrooms, kitchen
- Portered building, private garden for the building

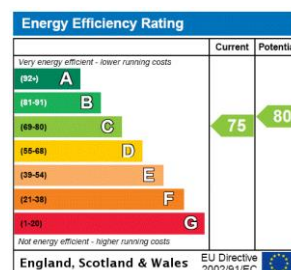


Very well finished apartment with lift access, moments from Sloane Square. The property has been beautifully finished throughout and benefits from a caretaker and access to a beautiful shared garden.

The apartment is approx. 1000 square feet with two large bedroom with built in storage, 2 bathrooms and a large reception room with wooden flooring.

Located close to Sloane Square tube station and providing easy access to shops, bars and restaurants of Kings Road and Sloane Street.

**Minimum Term:** 12 months  
**Deposit Required:** £5,700.00  
**Local Authority:** Royal Borough of Kensington & Chelsea  
**Council Tax Band:** G  
**EPC Rating:** C  
**Furnished**



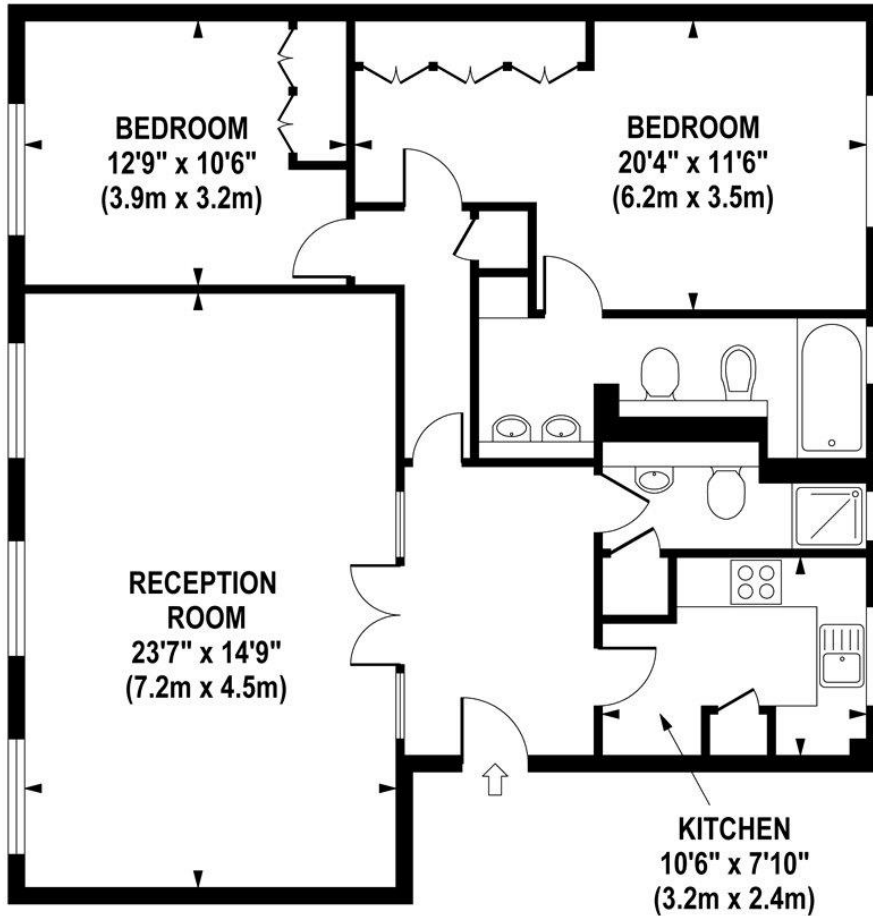
**Chestertons Knightsbridge & Belgravia Lettings**

31 Lowndes Street  
 London  
 SW1X 9HX  
 knightsbridge@chestertons.co.uk  
 02072353530  
 chestertons.co.uk

Additional tenant charges apply (fees apply to non-AST tenancies only)  
 Tenancy Agreement Fee: £300  
 References per Tenant/Guarantor: £60  
 Inventory check (approx. £100 – £250 inc. VAT)  
 chestertons.co.uk/property-to-rent/applicable-fees

# CLIVEDEN HOUSE

Approximate Gross Internal Area 1055 sq ft / 98.0 sq m



**SECOND FLOOR  
GROSS INTERNAL  
FLOOR AREA 1055 SQ FT**

Although every attempt has been made to ensure accuracy, all measurements are approximate. The floor plan's for illustrative purposes only and not to scale. Measured in accordance to RICS standards.

DE-PHOTOGRAPHY.NET

