



**Connells**

White Gables Chart Hill Road  
Chart Sutton Maidstone

# White Gables Chart Hill Road Chart Sutton Maidstone ME17 3RL

for sale offers over  
**£490,000**



## Property Description

Situated within the desirable and semi-rural setting of Chart Hill, this bungalow presents an exceptional opportunity to acquire a substantial and versatile family home surrounded by the Kent countryside, while remaining within convenient reach of Maidstone town centre.

The property offers well-proportioned accommodation, thoughtfully arranged to suit modern family living while enjoying a light and airy feel throughout. The internal layout provides flexible living spaces ideal for entertaining, home-working and day-to-day family life, complemented by comfortable bedroom accommodation and bathroom facilities.

The bungalow has recently been redecorated with new flooring throughout the home.

Externally, the home benefits from established grounds that offer a high degree of privacy and an ideal environment for outdoor enjoyment, whether for relaxing, entertaining or family use.

The setting is a true highlight, combining village-style living with ease of access to local amenities, reputable schools and main road links including the M20, making this an excellent choice for commuters.

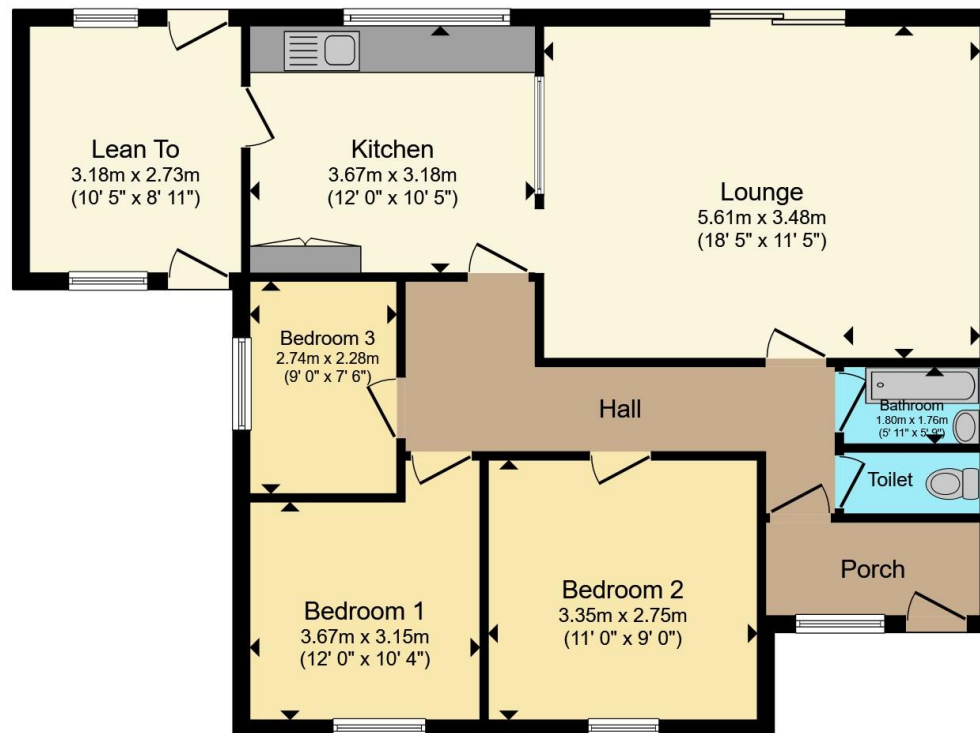
Properties in this location are rarely available, and early viewing is strongly advised to fully appreciate the space, setting and lifestyle on offer.











Total floor area 88.9 m<sup>2</sup> (957 sq.ft.) approx

This floor plan is for illustrative purposes only. It is not drawn to scale. Any measurements, floor areas (including any total floor area), openings and orientation are approximate. No details are guaranteed, they cannot be relied upon for any purpose and they do not form part of any agreement. No liability is taken for any error, omission or misstatement. A party must rely upon its own inspection(s). Powered by [www.propertybox.io](http://www.propertybox.io)



To view this property please contact Connells on

**T 01622 751034**

**E [maidstone@connells.co.uk](mailto:maidstone@connells.co.uk)**

30 King Street  
MAIDSTONE ME14 1BS

EPC Rating: D Council Tax  
Band: E

Tenure: Freehold

**view this property online [connells.co.uk/Property/MAI405488](http://connells.co.uk/Property/MAI405488)**



1. MONEY LAUNDERING REGULATIONS Intending purchasers will be asked to produce identification documentation at a later stage and we would ask for your co-operation in order that there will be no delay in agreeing the sale. 2. These particulars do not constitute part or all of an offer or contract. 3. The measurements indicated are supplied for guidance only and as such must be considered incorrect. Potential buyers are advised to recheck measurements before committing to any expense. 4. We have not tested any apparatus, equipment, fixtures, fittings or services and it is in the buyers interest to check the working condition of any appliances.

Connells Residential is registered in England and Wales under company number 1489613, Registered Office is Cumbria House, 16-20 Hockliffe Street, Leighton Buzzard, Bedfordshire, LU7 1GN. VAT Registration Number is 500 2481 05.

**See all our properties at [www.connells.co.uk](http://www.connells.co.uk) | [www.rightmove.co.uk](http://www.rightmove.co.uk) | [www.zoopla.co.uk](http://www.zoopla.co.uk)**

Property Ref: MAI405488 - 0007