



Clarence Walk, SW4

£575,000

Dexters



Clarence Walk, SW4

A well presented two bedroom, two bathroom ground floor flat set within a modern purpose built development, benefiting from a private garden. The property omprises of a spacious reception room with direct access to the garden with well appointed kitchen, two double bedrooms, including a principal bedroom with en-suite, and a contemporary family bathroom. The private garden provides an excellent space for entertaining or relaxing, adding to the appeal of this home.

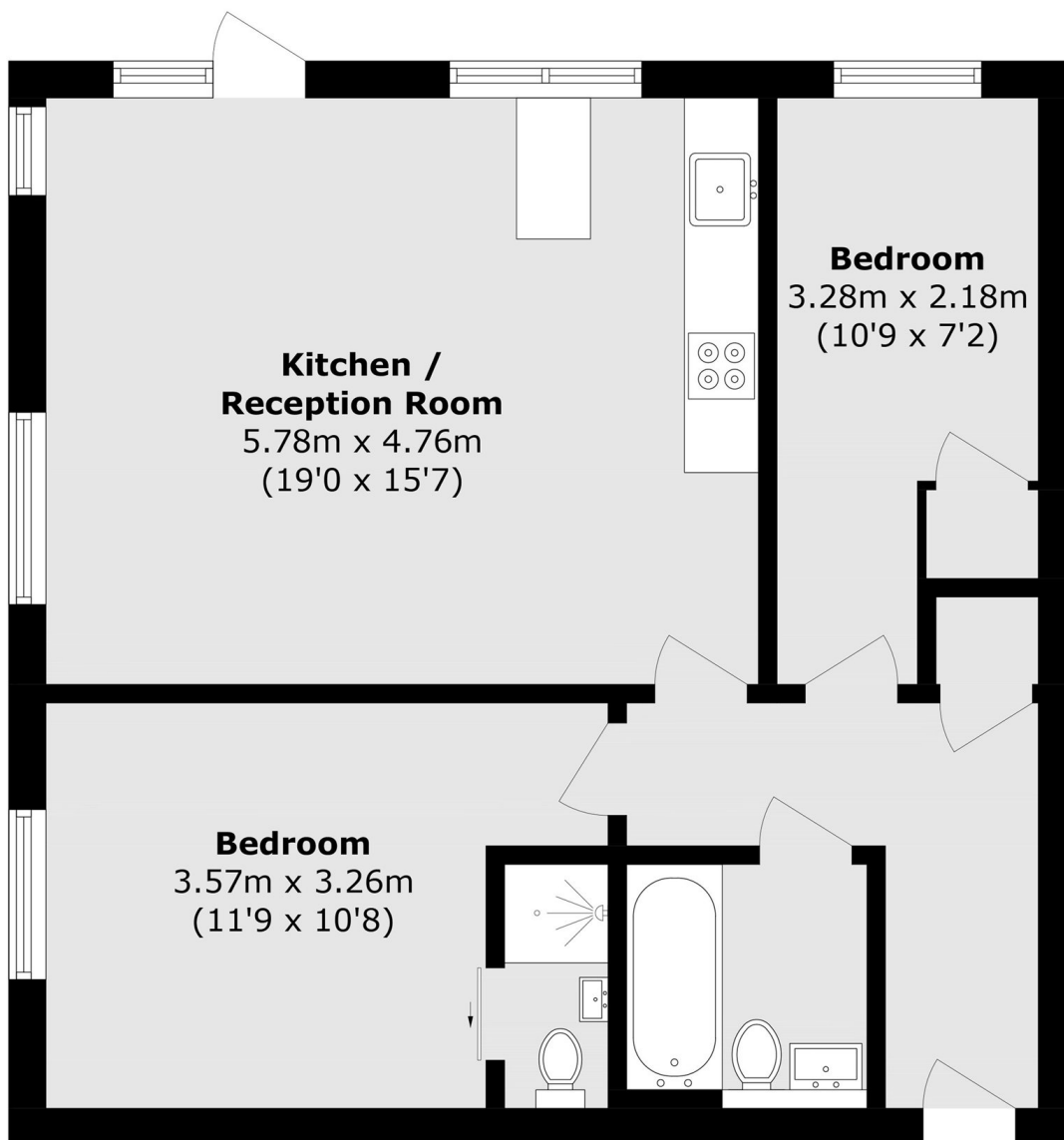
Clarence Walk is on Jeffreys Road which is a quiet street nearby to the vibrant centres of Clapham High Street and Vauxhall Town Centre, with transport links via Clapham North (Northern Line) and Stockwell (Northern and Victoria Line).

Features

- Two Bedroom
- Two Bathroom
- Open Plan Living Space
- Ground Floor
- Private Garden



Clarence Walk, London, SW4



Total area (approx.): 66.0 sq. m (710.5 sq. ft)