



Fulham Road, SW6

£625,000

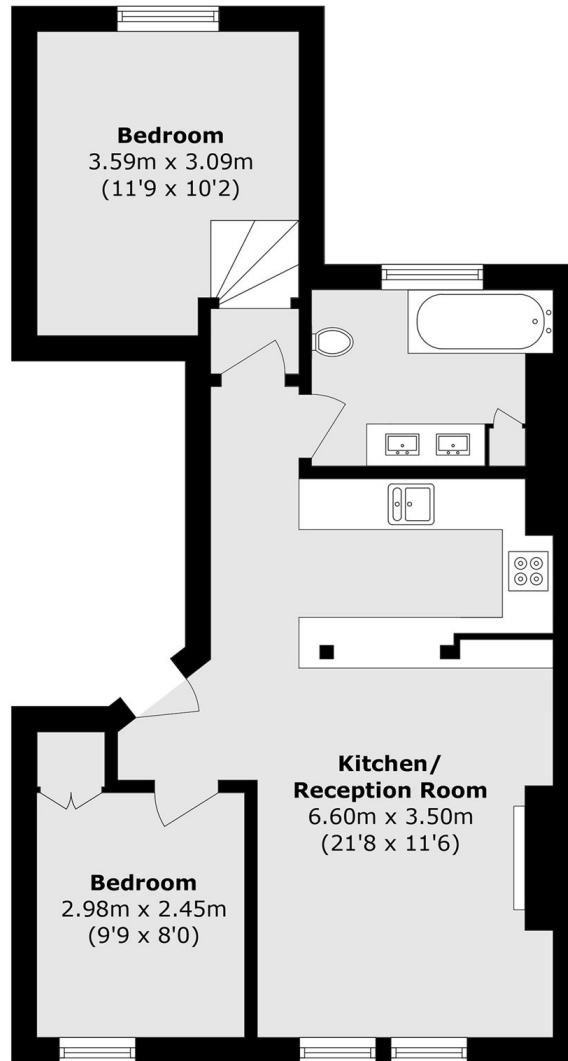
Set on the first floor of a semi-detached Victorian conversion on Fulham Road, this idyllic, light-filled apartment is a must-see. The property features two well-proportioned bedrooms alongside a spacious, open plan kitchen and living area, complete with a breakfast bar.

Set back from the Fulham Road, the property is conveniently located within walking distance of all the boutique shops, bars and restaurants in Parsons Green. The green itself is close by along with the other green spaces at Bishops Park and Eel Brook Common.

Features

- Two Double Bedrooms
- Family Bathroom
- Open Plan Kitchen/Living
- First Floor
- Period Features
- Parsons Green

Fulham Road, London, SW6



First Floor

Total area (approx.): 54.0 sq. m (581.2 sq. ft)