

# FROGNAL

HAMPSTEAD, NW3



# FROGNAL

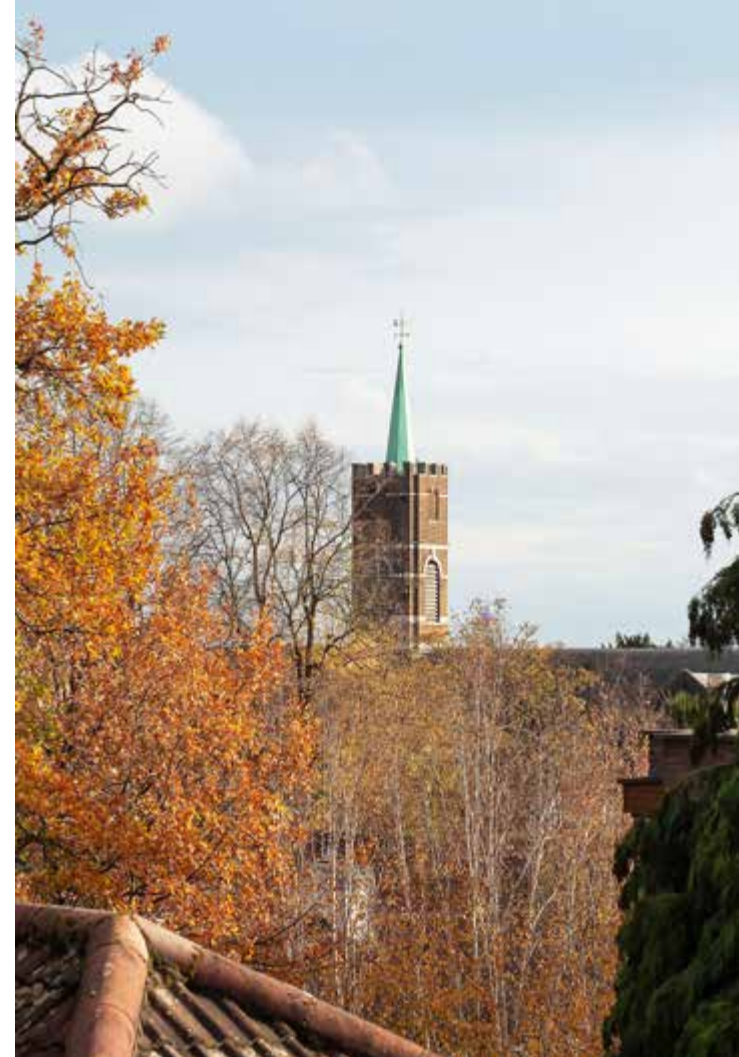
HAMPSTEAD, NW3

A totally refurbished, beautifully presented 2 bedroom apartment offering 884 sq ft of living space set over the Ground and First floors of this attractive period building which is set back from the road behind a deep manicured communal garden.

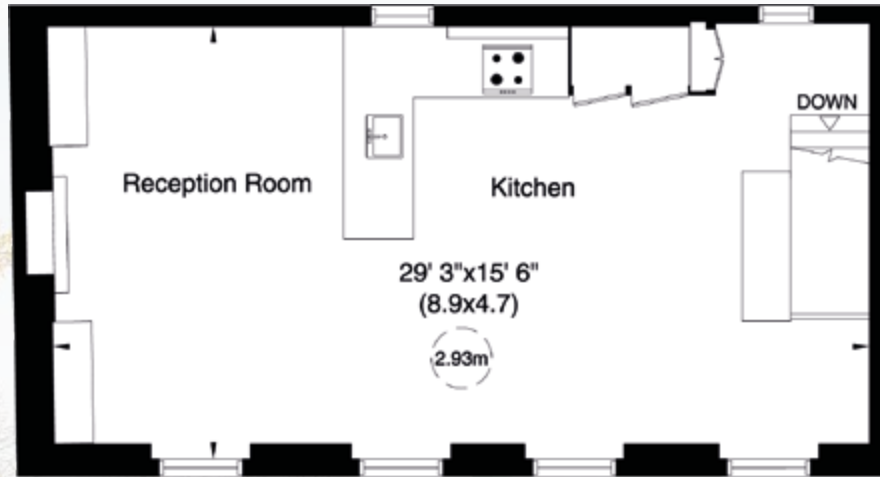
This fantastic apartment boasts 2.93 m high ceilings on the first floor with an abundance of natural light from four three quarter length sash widows in the spacious 29' open plan reception room/kitchen/dining room that overlooks the gardens and rooftops towards the Village. The property has two bedrooms one with built in wardrobes, a luxurious family bathroom and benefits further from having a private entrance and steps onto patio area with direct access onto the communal gardens.

Located close to the junction with Frogmal Gardens, the property is conveniently located within walking distance of Hampstead Village and the vast array of boutiques, coffee shops and extensive transport links.

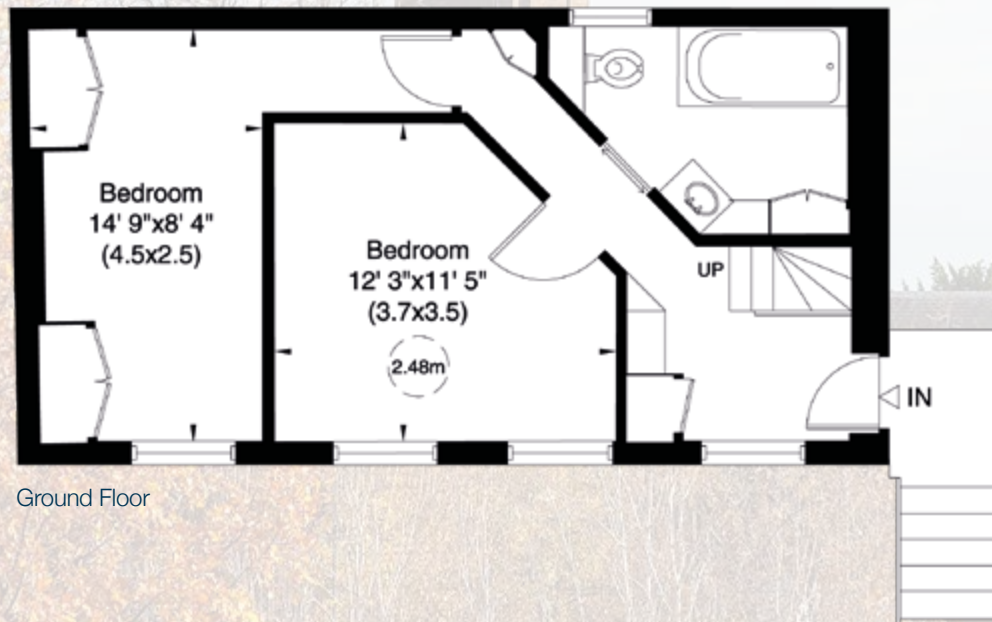




APPROXIMATE GROSS INTERNAL AREA  
82 SQ\_M (884 SQ\_FT)



First Floor



Ground Floor



**Misrepresentation Act 1967.** This brochure and the descriptions and measurements herein do not constitute representation and whilst every effort has been made to ensure accuracy, this cannot be guaranteed.



## ACCOMMODATION & AMENITIES

PRIVATE ENTRANCE • 2 BEDROOMS • FAMILY BATHROOM

29' RECEPTION ROOM • SHAKER STYLE' FITTED KITCHEN

DINING AREA • COMMUNAL GARDENS

RESIDENTS PARKING • EER E53

PRICE ON APPLICATION

LONG LEASEHOLD  
AND SHARE OF FREEHOLD

SOLE SELLING AGENTS

MARCUS  
PARFITT

RESIDENTIAL SALES & ACQUISITIONS

020 7431 0000

28 Church Row, Hampstead, London NW3 6UP  
email: [info@marcusparfitt.com](mailto:info@marcusparfitt.com) [www.marcusparfitt.com](http://www.marcusparfitt.com)