



Connells

Farm Way
Bushey



Property Description

This charming three-bedroom semi-detached home is set on a sought-after residential road and offers generous living space, modern efficiency features and exciting potential for future extension (STPP).

The ground floor benefits from a bright and versatile layout, including a spacious lounge, dining area and a conservatory leading out to the rear garden—ideal for relaxing, entertaining or creating an expanded family living zone. Upstairs, there are three well-proportioned bedrooms and a modern family bathroom, providing comfortable accommodation for growing households.

Externally, the property includes a driveway for off-street parking and a garage, offering further parking, storage or workshop potential. For buyers looking to tailor the home to their needs, there is excellent potential to extend (STPP), making this an attractive long-term opportunity.

An added advantage is the presence of solar panels, enhancing energy efficiency and helping reduce running costs—an appealing feature for modern family living.

Situated close to highly regarded schools, local shops, green spaces and transport links, this home combines comfort, practicality and superb scope for improvement in a desirable residential setting.

Entrance Hall

Door to front aspect. Understairs storage.

Living Room

Window to front. Radiator. TV point.

Dining Room

Sliding door to conservatory. Radiator.

Kitchen

Window to rear. Door to side. Wall and base units, washing machined, Cooker hood and electric oven. Sink.

Conservatory

Windows to side and rear. Door to garden.

Landing

Window to side.

Bedroom One

Window to front. Radiator.

Bedroom Two

Window to rear. Radiator. TV point.

Bedroom Three

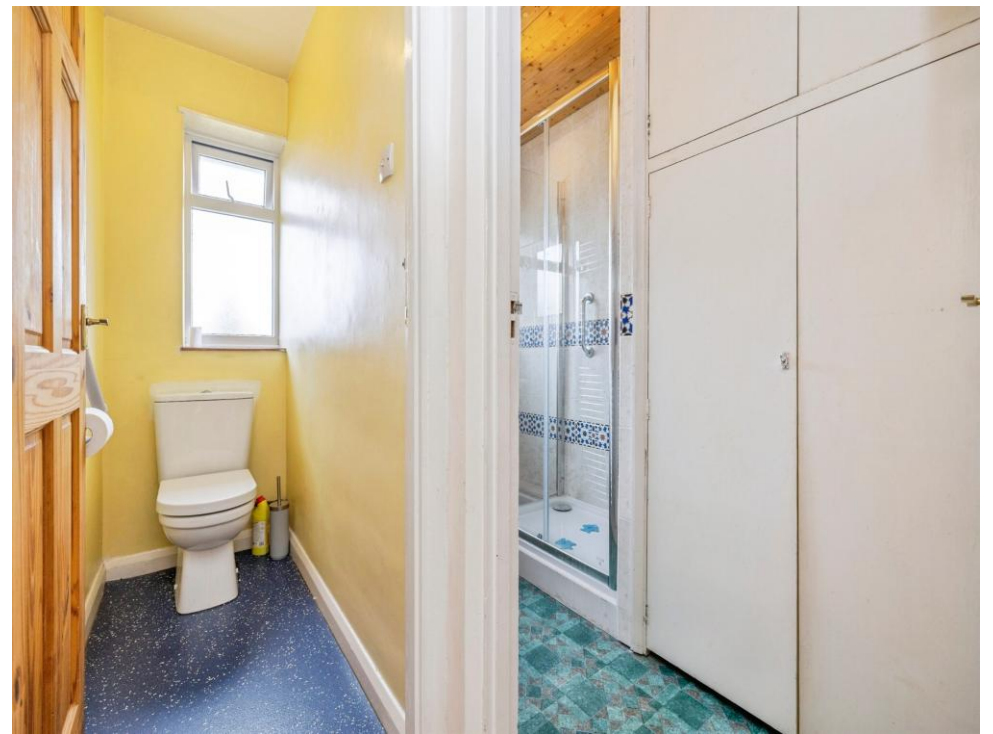
Window to front. Radiator.

Bathroom

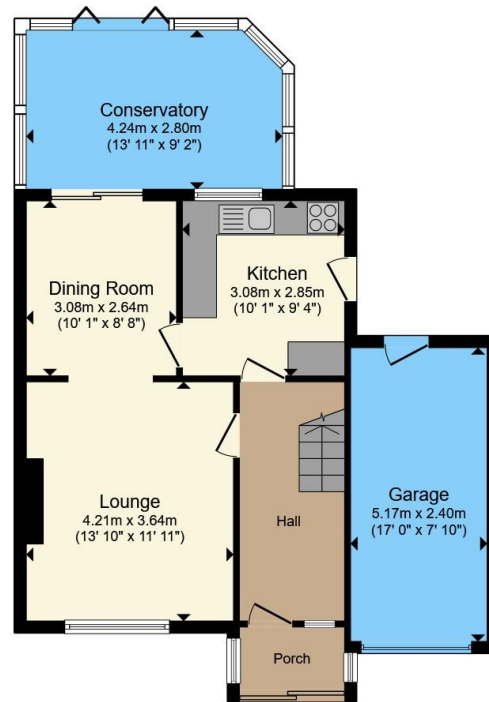
Window to rear. Wash hand basin. Shower cubicle. Tiled.

Separate WC. Loft access

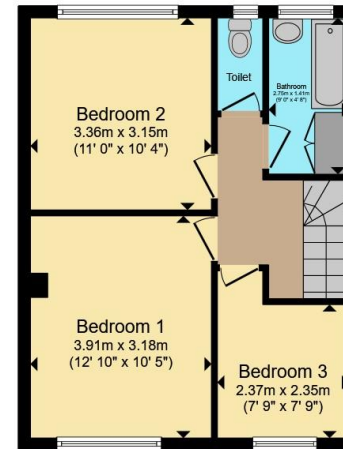








Ground Floor



First Floor

Total floor area 111.0 m² (1,195 sq.ft.) approx

This floor plan is for illustrative purposes only. It is not drawn to scale. Any measurements, floor areas (including any total floor area), openings and orientation are approximate. No details are guaranteed, they cannot be relied upon for any purpose and they do not form part of any agreement. No liability is taken for any error, omission or misstatement. A party must rely upon its own inspection(s). Powered by www.propertybox.io



To view this property please contact Connells on

T 020 8950 4404
E bushey@connells.co.uk

86 High Street
 BUSHEY WD23 3HD

EPC Rating: C Council Tax
 Band: E

Tenure: Freehold

view this property online connells.co.uk/Property/BUS308049



1. MONEY LAUNDERING REGULATIONS Intending purchasers will be asked to produce identification documentation at a later stage and we would ask for your co-operation in order that there will be no delay in agreeing the sale. 2. These particulars do not constitute part or all of an offer or contract. 3. The measurements indicated are supplied for guidance only and as such must be considered incorrect. Potential buyers are advised to recheck measurements before committing to any expense. 4. We have not tested any apparatus, equipment, fixtures, fittings or services and it is in the buyers interest to check the working condition of any appliances.

Connells Residential is registered in England and Wales under company number 1489613, Registered Office is Cumbria House, 16-20 Hockliffe Street, Leighton Buzzard, Bedfordshire, LU7 1GN. VAT Registration Number is 500 2481 05.

See all our properties at www.connells.co.uk | www.rightmove.co.uk | www.zoopla.co.uk

Property Ref: BUS308049 - 0006