



Cutter Lane, Greenwich, London SE10 0YW



# Cutter Lane, Greenwich, SE10 0YW

Leasehold (228 years remaining)

Sophisticated apartment with private balcony showcasing stunning views to the iconic O2. Located in a premium riverside development with concierge services and gym facilities, perfectly positioned in historic Greenwich.

## Key Features

- 1 Bedroom, 1 Bathroom
- Beautifully presented throughout
- Excellent transport links
- Council Tax: **D**
- Service Charge: **£4,800 P/A**
- Ground Rent: **£360 P/A**
- Great location
- EPC: **B**

The apartment's standout feature is its private balcony, which frames spectacular views across London's skyline to the iconic O2 Arena. This outdoor space transforms the living experience, offering a perfect vantage point to appreciate both the capital's architectural heritage and its contemporary landmarks. The interior spaces benefit from abundant natural light and contemporary finishes that complement the property's elevated perspective.

Residents enjoy exclusive access to the development's comprehensive amenities, including the professionally managed fitness suite and dedicated concierge team, ensuring both convenience and security around the clock. The building's modern infrastructure and thoughtful design create an environment that caters to discerning urban professionals seeking both comfort and prestige.

Transport connectivity is exceptional, with Cutty Sark DLR station and Greenwich National Rail station providing swift access to Canary Wharf, the City, and central London.











## Cutter Lane, SE10

Approximate Gross Internal Area = 53.7 sq m / 578 sq ft

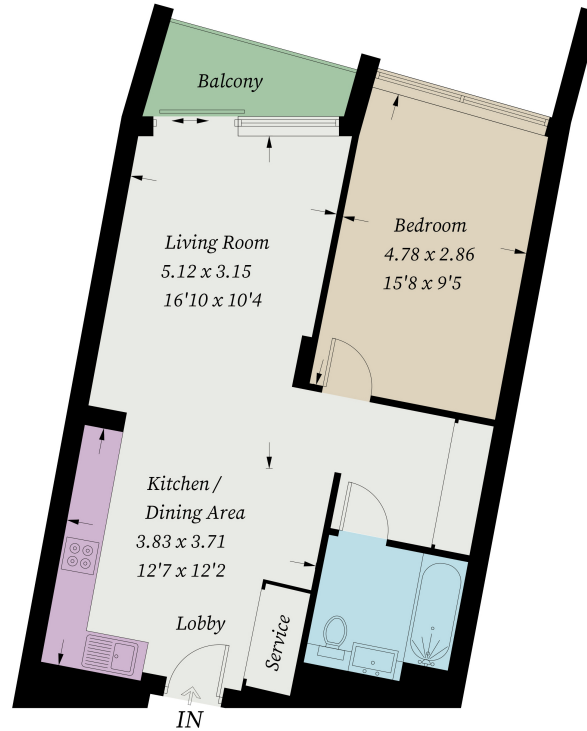


Illustration for identification purposes only, measurements are approximate, not to scale. Fourlabs.co © (ID1262246)