

Sussex Gardens, W2

£900,000

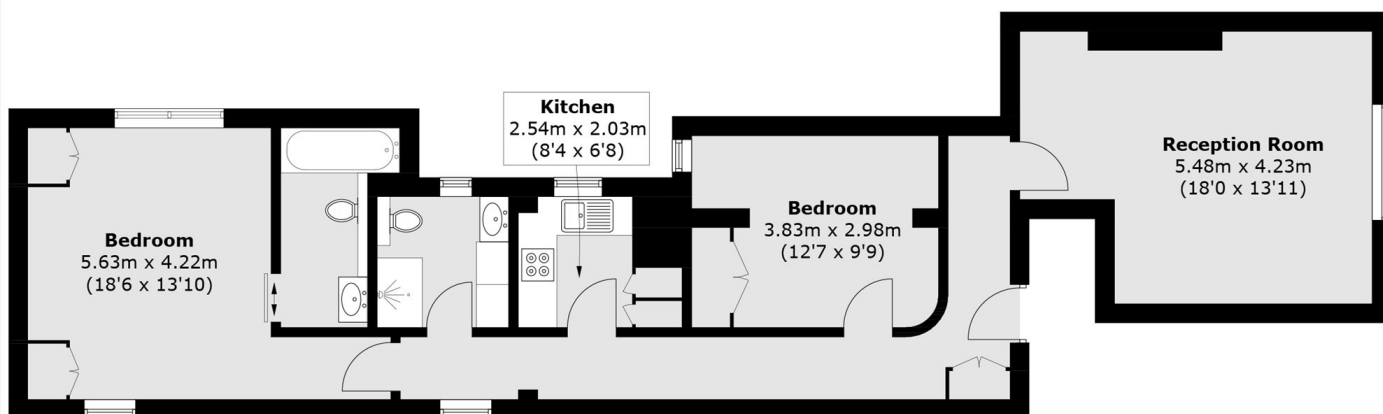
A stylish, raised ground floor apartment in a Victorian conversion, with high ceilings, wooden floors and a blend of modern and period details. The spacious reception has room to dine and there's a separate high specification kitchen, two double bedrooms and two bathrooms (one en suite), making an ideal home for anyone seeking a convenient location.

Sussex Gardens is a prime location close to Hyde Park and Paddington, giving excellent transport links around London and West towards Heathrow. Close by is a plethora of shops, restaurants and bars.

Features

- Two Double Bedrooms
- Two Bathrooms
- High Ceilings
- Raised Ground Floor
- Near Hyde Park
- Paddington

Sussex Gardens, London, W2



Ground Floor

Total area (approx.): 79.9 sq. m (860.0 sq. ft)