



## Elmbourne Road, SW17

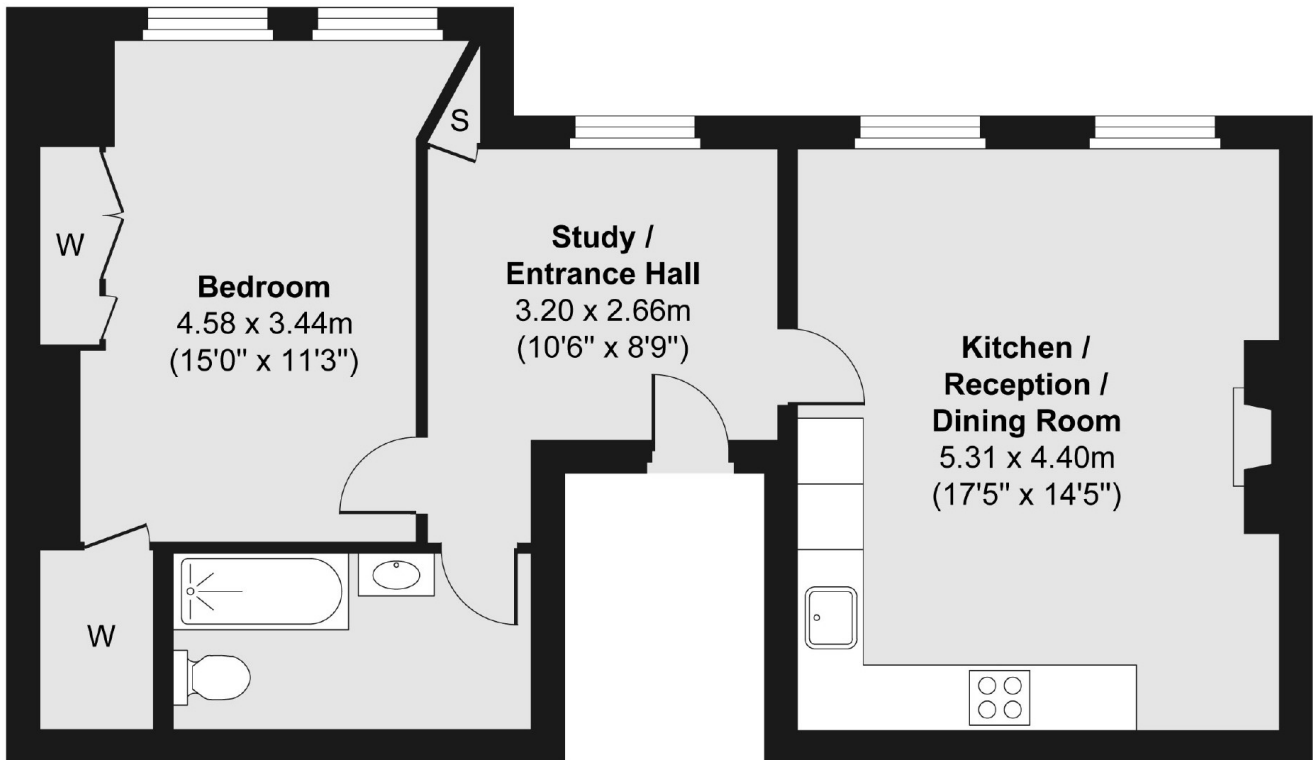
£1,675 PCM

A bright one bedroom flat situated within the well sought after Heaver Estate. Offering ample living space throughout, this property would be perfect for a professional or single occupant.

- First Floor Flat
- Open Plan Kitchen
- One Double Bedroom
- Modern Fitted Bathroom
- Furnished
- Close to Tooting Bec Common

For further information on the costs associated with renting a property, please pop into our office or visit our website.

## First Floor



Total area (approx.) 56.95 sq. m (613 sq. ft)

Jacksons Balham  
8-11 Balham Station Road  
London  
SW12 9SG  
020 8675 6565  
[balham.lettings@jacksonsestateagents.com](mailto:balham.lettings@jacksonsestateagents.com)

Energy Rating: TBC We aim to make our particulars both accurate and reliable. However they are not guaranteed; nor do they form part of an offer or contract. If you require clarification on any points then please contact us, especially if you're traveling some distance to view. Please note that appliances and heating systems have not been tested and therefore no warranties can be given as to their good working order.