

ALLDAY  
& MILLER



Botwell Common Road, Hayes, UB3 1JA  
£225,000





## Botwell Common Road, Hayes, UB3 1JA

**£225,000**

- One Bedroom Apartment
- First Floor
- £600 Service Charge Per Annum
- Nearby To Local Schools/Amenities
- Highly Desirable Location
- Brand New Carpet Fitted
- 114 Years Lease Remaining
- Close Proximity To Elizabeth Line
- Parking Available
- Chain Free

## Description

This charming property offers a welcoming living space, ideal for individuals or couples seeking both comfort and convenience.

The bright and airy reception/dining room provides an inviting setting for relaxing or entertaining guests, while the fitted kitchen is thoughtfully designed for practicality and everyday functionality. The property further benefits from a modern bathroom and a well-proportioned double bedroom.

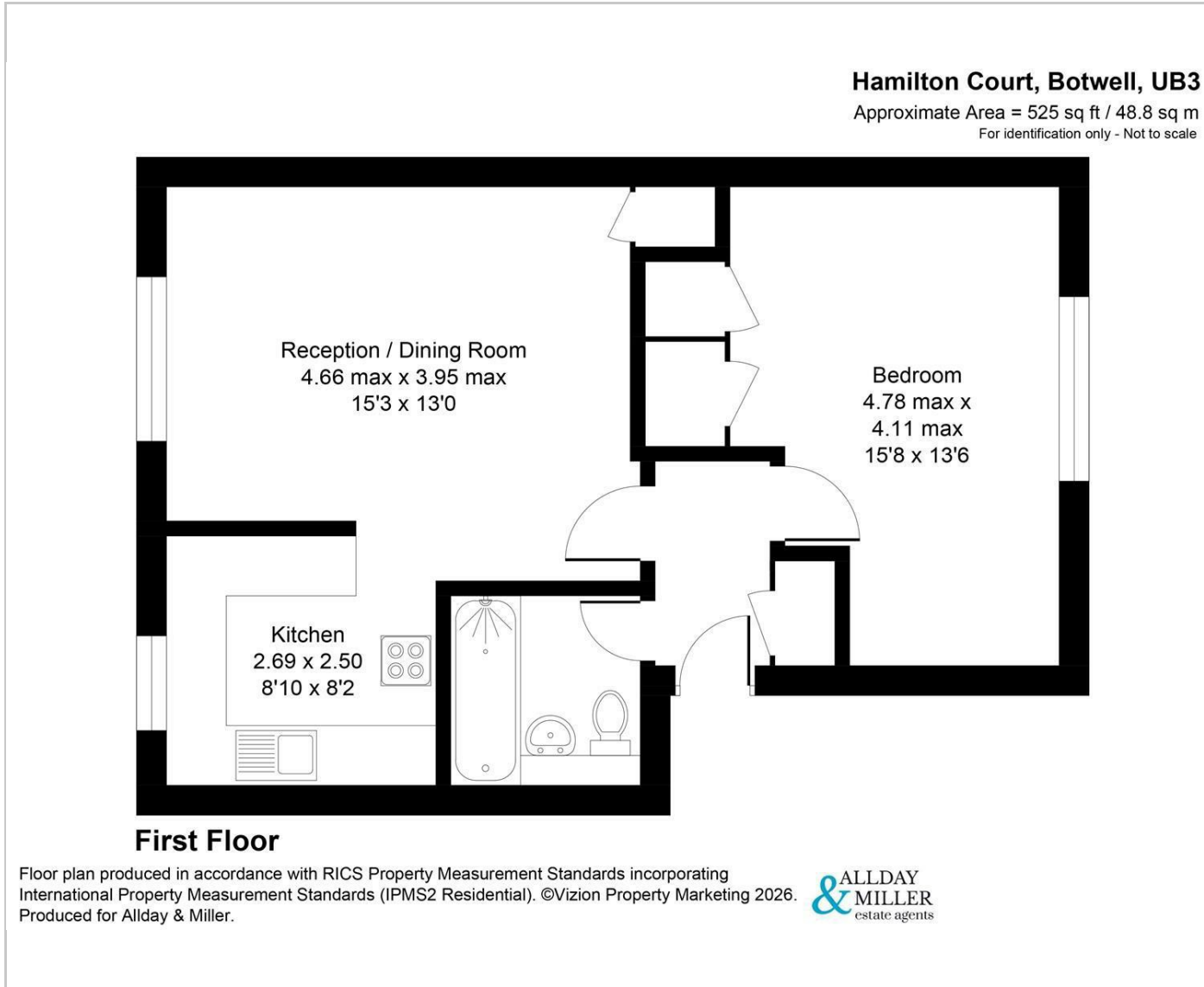
In addition, the development offers parking facilities, a highly desirable feature in this vibrant and bustling area.

## Situation

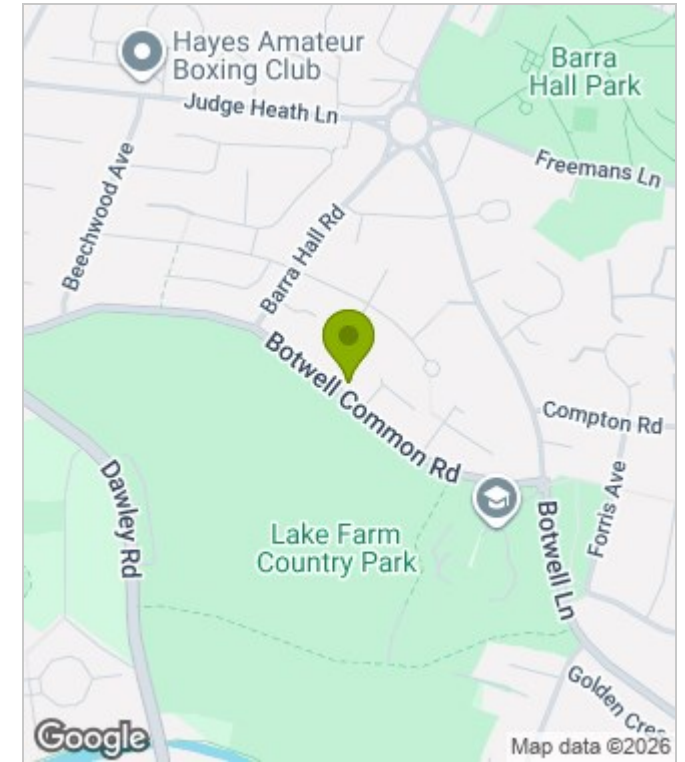
Bowtell Common Road is a prime location in the heart of Hayes. Hayes & Harlington station just a short minute drive away with the Elizabeth line making the journey into Central London a breeze, along with the bus station with several routes to local amenities. Hayes town centre with its variety of local shops, cafes, takeaways and coffee shops. The area is also served by a number of highly regarded schools including Lake Farm Park Academy and Rosedale Collage secondary school.



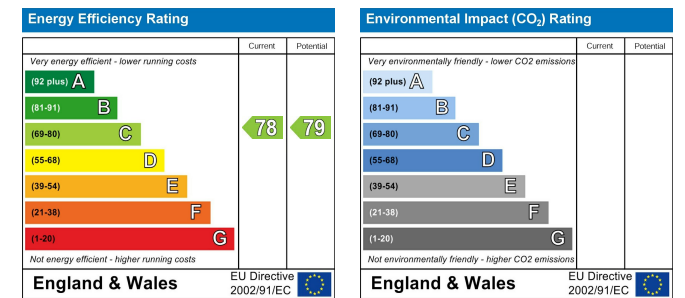
## Floor Plans



## Area Map



## Energy Performance Graph



These particulars, whilst believed to be accurate are set out as a general outline only for guidance and do not constitute any part of an offer or contract. Intending purchasers should not rely on them as statements of representation of fact, but must satisfy themselves by inspection or otherwise as to their accuracy. No person in this firm's employment has the authority to make or give any representation or warranty in respect of the property.