



Victoria Street, SW1H

£600 Per week

Located on the eighth floor of Artillery Mansions, this one bedroom flat with separate kitchen, plenty of built in storage and a balcony overlooking the Westminster skyline is perfect for a single person or couple.

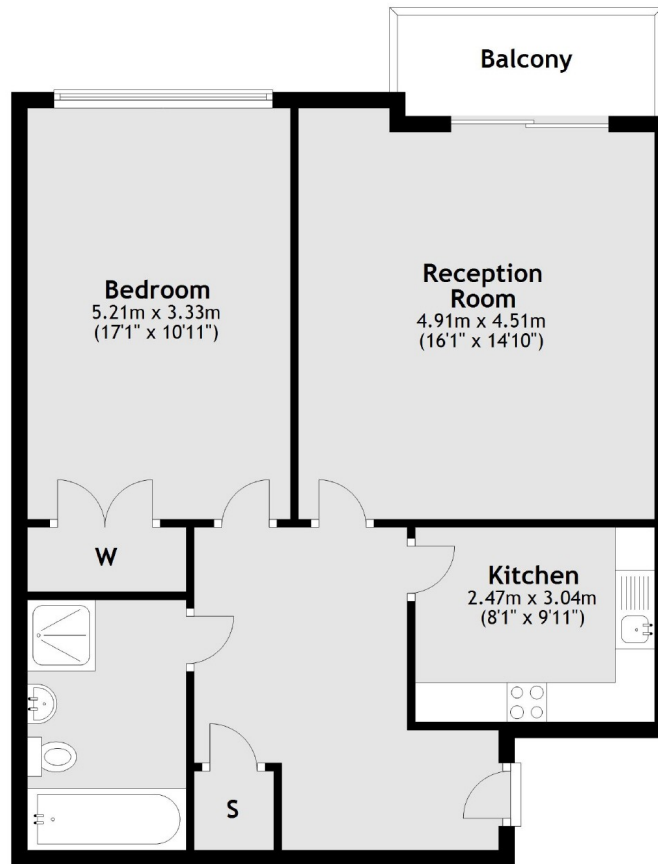
Artillery Mansions is a prestigious, modern mansion block, constructed behind a traditional red-brick facade with an imposing entrance on Victoria Street.

Features

- Eighth Floor
- Lift
- 24hr Porter
- Wood Floors
- Private Balcony
- Mansion Block

Victoria Street, London, SW1H

Eighth Floor



Total area: approx. 70.6 sq. metres (759.5 sq. feet)