



Richmond Hill Road, Cheadle

Guide Price £500,000

 2  1  3

- Detached Bungalow.
- Extensive Accommodation Extending to over 1000 sq ft.
- Exceptional Location in The Heart Of Cheadle.
- Two Well Proportioned Double Bedrooms.
- Beautiful Four Piece Family Bathroom.
- Large Tiered Rear Garden.
- Off Road Parking Space.
- Three Reception Rooms.
- No Onward Vendor Chain
- Tenure - / EPC - TBC / Council Tax Band - E

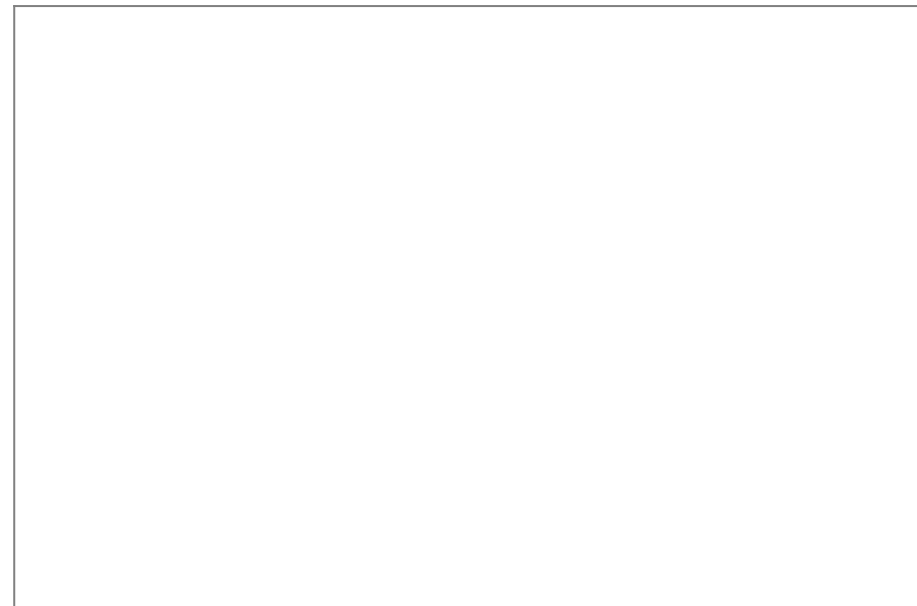
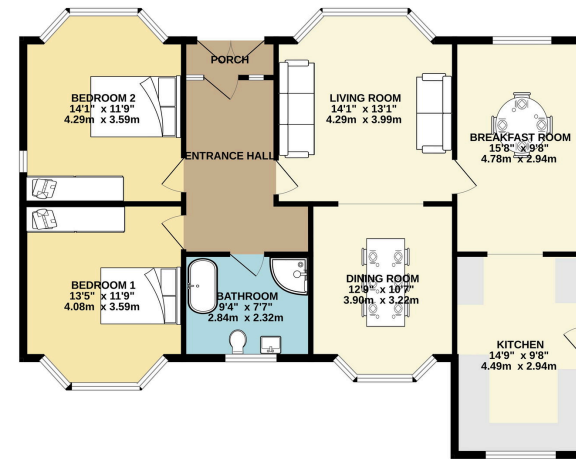


This detached bungalow on Richmond Hill Road in Cheadle offers spacious and flexible living, featuring two large double bedrooms and three reception rooms suitable for various uses such as living, dining, or a home office. It includes a sizeable four-piece family bathroom and a boarded loft with potential for conversion (subject to planning). Set on a generous plot, the property benefits from a private, tiered rear garden with patio space ideal for outdoor dining. Overall, it's a well-proportioned home in a desirable location with strong potential for personalisation.





GROUND FLOOR
1086 sq.ft. (100.9 sq.m.) approx.



9 Gatley Road, Cheadle, Cheshire SK8 1LY Tel. 0161 428 1488 Fax. 0161 428 1479
Email. mail@andrewdawson.co.uk