



One Thames Quay, 222 Marsh Wall

, London E14 9PH

- Spacious 1 Bedroom Apartment
- Floor-to-Ceiling Windows
- 24-Hour Concierge
- Excellent Transport Links: Close to Canary Wharf Stations
- CTB-E
- Contemporary Open-Plan Kitchen
- Private Balcony
- On-Site Gym
- EPC-B

£2,950 Per Month



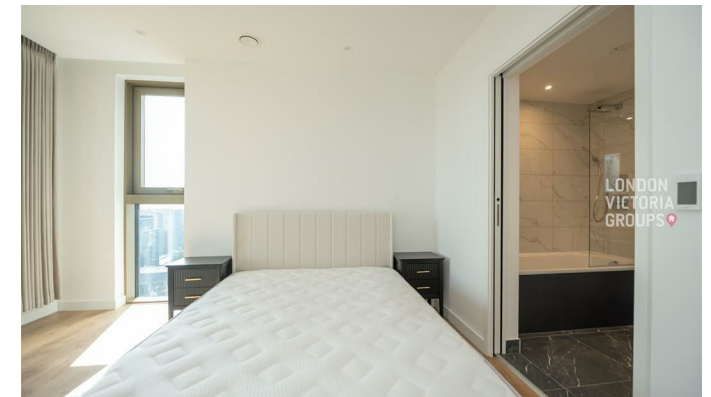
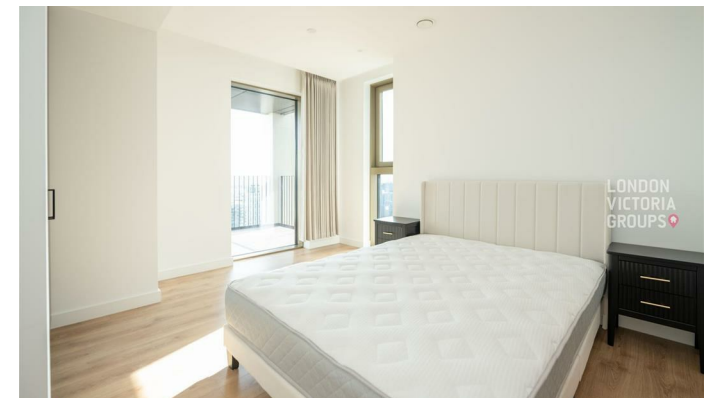
Local Authority **Tower Hamlets**
 Council Tax Band **E**
 EPC Rating **B**



London Office Office
 Spaces Victoria, 25 Wilton Road, Pimlico,
 London, SW1V 1LW

Contact
 020 3084 3094
 XL@londonvictoriagroups.co.uk
 www.londonvictoriagroups.co.uk

Agents Note: Whilst every care has been taken to prepare these particulars, they are for guidance purposes only. All measurements are approximate and for general guidance purposes only and whilst every care has been taken to ensure accuracy, they should not be relied upon and potential buyers/tenants are advised to recheck the measurements.



LONDON VICTORIA GROUPS

LONDON VICTORIA GROUPS

LONDON VICTORIA GROUPS