



Park Road, London, NW8 7HY
£9,815 PCM



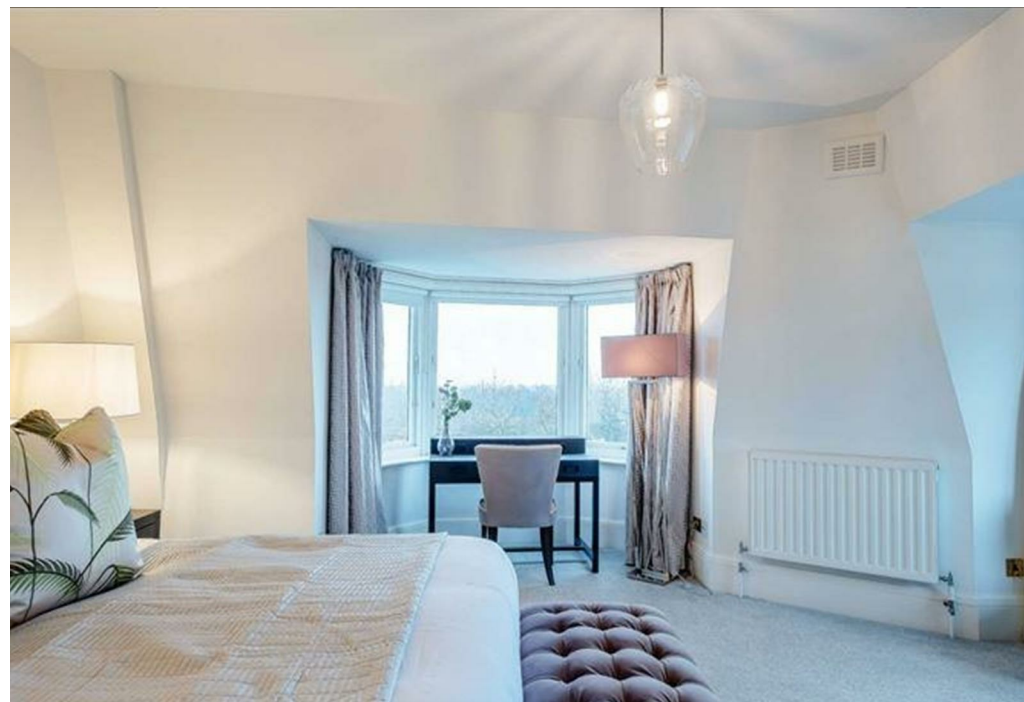


4 x  4 x  1 x 

A beautiful four bedroom penthouse apartment located in a prestigious mansion block offering fabulous views over Regent's Park.

The penthouse is set over 2135 sq ft and comprises a large dual aspect reception/dining room benefiting from a south facing private balcony with magnificent views over Regents Park, master bedroom with a dressing room and en-suite bathroom with a Jacuzzi allowing stunning views over Regents Park, three further bedrooms with en-suite bathrooms, kitchen, guest bathroom and cloakroom.

The apartment offers easy access to the famous Lords Cricket Ground, the open spaces of Regent's Park, along with all the local shops, bars, restaurants located on St John's Wood High Street.



Important Notice Debussy Property Service Ltd trading as Braithwait for themselves and for the vendor of this property whose agents they are, give notice that (i) these particulars do not constitute any part of an offer or contract, (ii) all statements contained within these particulars are made without responsibility on the part of Braithwait or the vendor, (iii) whilst none in good faith, none of the statements contained within these particulars are to be relied upon as a statement of representation or fact, (iv) any intending purchaser must satisfy him/herself by inspection or otherwise as to the correctness of each of the statements contained within these particulars, (v) the vendor does not make or give either Braithwait or any person within their employment any authority to make or give any representation or warranty whatsoever in relation to this property. Wide angled lenses may be used in photographs.

Call us on 0207 289 8889 or email sales@braithwait.co.uk

