



Arden Road, W13

£700,000

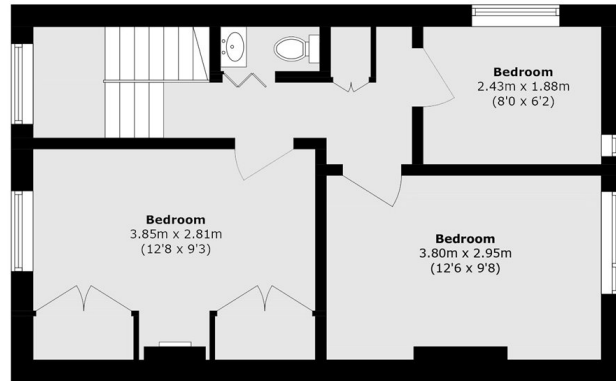
This split-level maisonette is set within a period building and benefits from its own private entrance. The first floor offers a bright reception room with high ceilings and period features, alongside a separate eat-in kitchen and a bathroom. The top floor comprises three bedrooms and an additional WC. Externally there is allocate parking and a private garden.

Arden Road is moments from Walpole Park and ideally located just a short walk to West Ealing "Lizzie Line" and 10 minutes to the shops at Ealing Broadway. This location combines convenience with a peaceful residential setting.

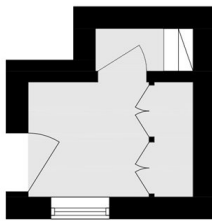
Features

- Period House
- Split Level
- Three Bedrooms
- Generous Living Space
- Period Features
- Private Garden and Parking

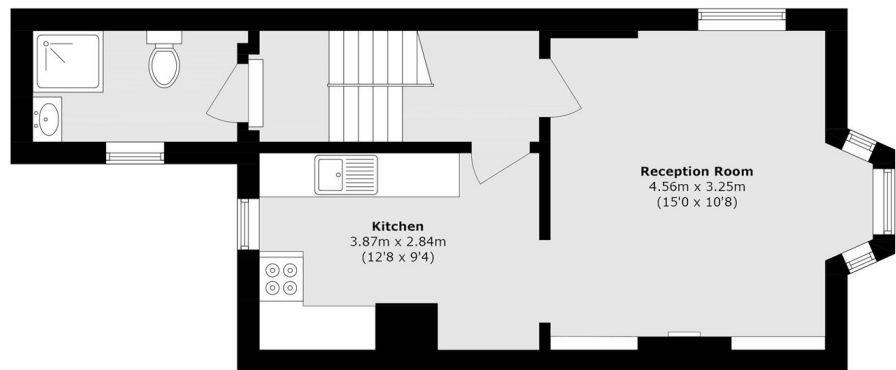
Arden Road, London, W13



Second Floor



Ground Floor



First Floor

Total area (approx.): 78.9 sq. m (849.3 sq. ft)